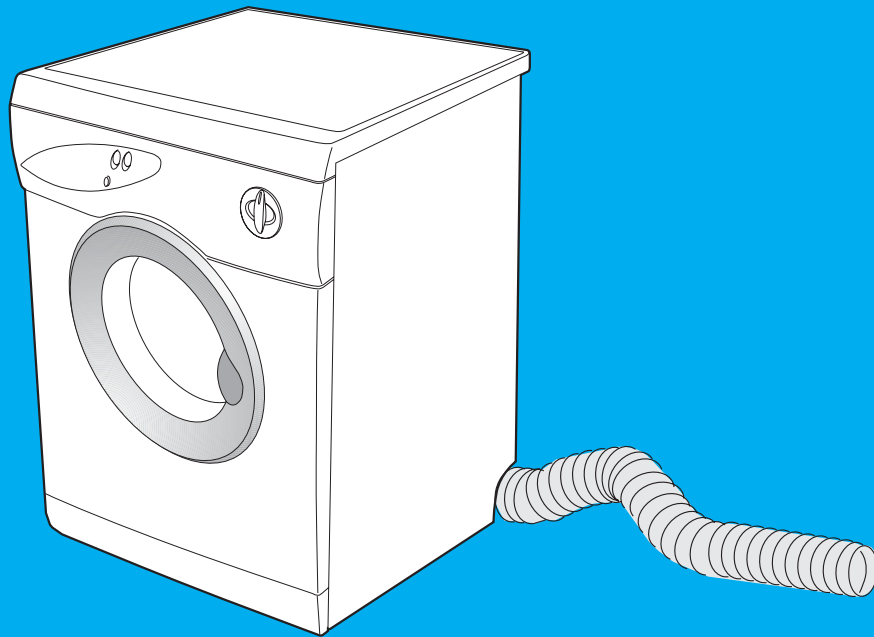


**Technical Assistance Service**

# Service Manual



## **Air-Vented Tumble Drier**

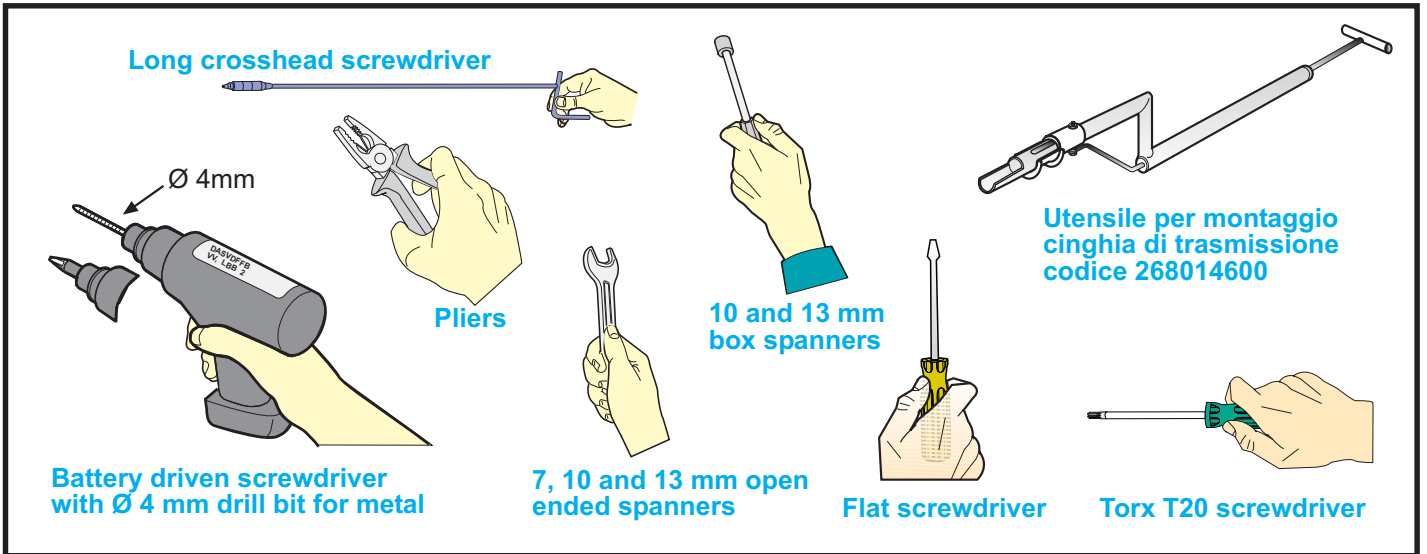
**IMPORTANT**  
Remove the plug from the mains power supply  
when carrying out any operations on the  
machine.

**IMPORTANT:**

This Manual must be used together with all the other technical documents appertaining to the product itself (Exploded views, technical documents and any other technical information provided).

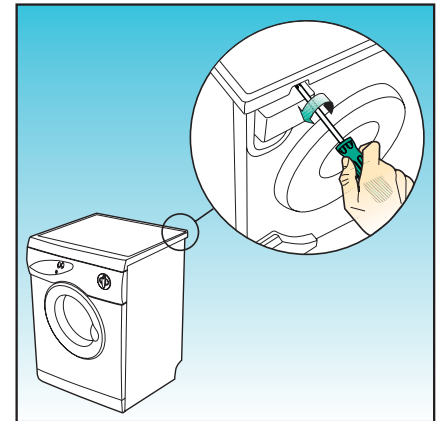
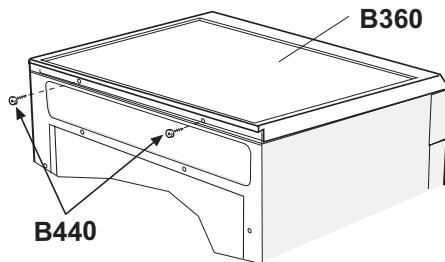
Contents		Page 02
Tools necessary for dismantling the various parts of the appliance:		Page 03
<b>Step 1</b>	Removing the top cover ( <b>B360</b> )	Page 03
<b>Step 2</b>	Removing and/or dismantling the programmer knob assembly	Page 03
<b>Step 3</b>	Removing and/or replacing the programmer ( <b>B290</b> ) from the control panel ( <b>B270</b> )	Page 04
<b>Step 4</b>	Removing and/or replacing the buttons ( <b>B210</b> ) and switches ( <b>B330-B340</b> ) from the control panel	Page 04
<b>Step 5</b>	Removing and/or replacing the cover piece ( <b>B260</b> ) from the control panel ( <b>B270</b> )	Page 05
<b>Step 6</b>	Removing and/or replacing the control panel ( <b>B270</b> )	Page 05
<b>Step 7</b>	Removing and/or replacing the door microswitch ( <b>B590</b> )	Page 06
<b>Step 8</b>	Removing the door	Page 06
<b>Step 9</b>	Removing the door glass ( <b>B120</b> )	Page 06
<b>Step 10</b>	Removing the door hinge ( <b>B060</b> )	Page 07
<b>Step 11</b>	Removing the door handle ( <b>B710</b> )	Page 07
<b>Step 12</b>	Removing the brush support brackets and relative humidity sensing brushes, consisting of:	
	- Support bracket ( <b>A620</b> )	
	- Brush holder ( <b>A610</b> )	
	- Humidity sensing brush ( <b>A630</b> )	
	- Pin ( <b>A640</b> )	
	- Spring ( <b>A570</b> )	Page 08
<b>Step 13</b>	Removing and/or replacing the power supply cable and/or terminal block ( <b>B450</b> )	Page 08
<b>Step 14</b>	Removing and/or replacing heater element ( <b>B560</b> ) and air inspection cover ( <b>B051</b> )	Page 09
<b>Step 15A</b>	<b>For driers produced prior to week 18 of 2003</b> Removing and/or replacing:	
	- the manual reset safety thermostat ( <b>B006</b> )	
	- the automatic reset maximum temperature thermostat ( <b>B030</b> )	Page 09
<b>Step 15B</b>	<b>For driers produced from week 18 of 2003 (from serial number 200318...)</b> Removing and/or replacing:	
	- the manual reset safety thermostat ( <b>B006</b> )	
	- the automatic reset maximum temperature thermostat ( <b>B030</b> )	Page 09
<b>Step 16A</b>	<b>For driers produced prior to week 18 of 2003</b> Removing and/or replacing the rear panel ( <b>B580</b> )	Page 10
<b>Step 16B</b>	<b>For driers produced from week 18 of 2003 (from serial number 200318...)</b> Removing and/or replacing the rear panel ( <b>B580</b> )	Page 11
<b>Step 17</b>	Removing and/or replacing the rear drum seal with felt ( <b>B025</b> )	Page 12
<b>Step 18</b>	Removing and/or replacing the drive belt ( <b>A290</b> )	Page 12
<b>Step 19</b>	Removing and/or replacing the drum assembly ( <b>A300</b> )	Page 13
<b>Step 20</b>	Replacing and/or removing the drum paddle with probe ( <b>A320</b> ) and/or the drum paddle without probe ( <b>A310</b> ) from the drum assembly ( <b>A300</b> )	Page 13
<b>Step 21</b>	Replacing and/or removing the slide blocks ( <b>A530</b> ) and the felt seal ( <b>A410</b> ) from the drum support surround ( <b>A340</b> )	Page 13
<b>Step 22</b>	Removing and/or replacing the motor ( <b>A120</b> )	Page 14
<b>Step 23</b>	Removing and/or replacing the drum support surround ( <b>A340</b> )	Page 15
<b>Step 24</b>	Replacing and/or removing the left hand side panel ( <b>B040</b> ) and/or the right hand side panel ( <b>B230</b> )	Page 16
<b>Step 25</b>	Removing and/or replacing the plastic plinth ( <b>B007</b> ) from the front panel ( <b>B070</b> )	Page 17
<b>Step 26</b>	Replacing the bottom panel ( <b>A260</b> )	Page 17

Tools necessary for dismantling the various parts of the appliance:



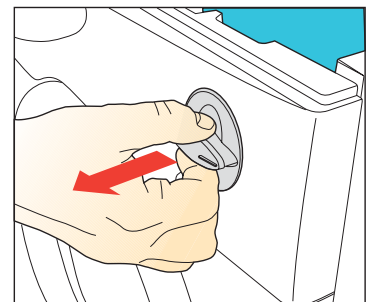
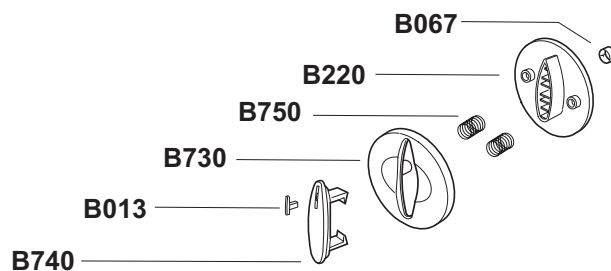
**Step 1** Removing the top cover (B360):

- Use a crosshead screwdriver to remove the two screws (B440) securing the back of the top cover panel (B360).
- Lift the back part of the cover and push it forwards to remove it.
- To re-assemble, follow the same procedure in reverse order.



**Step 2** Removing and/or dismantling the programmer knob:

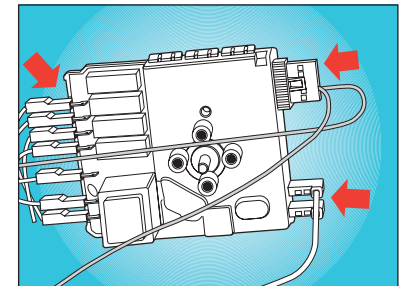
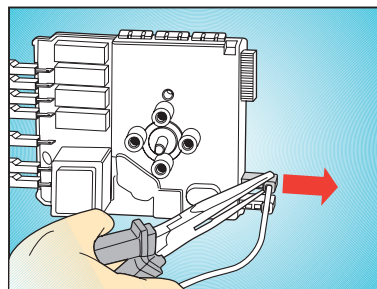
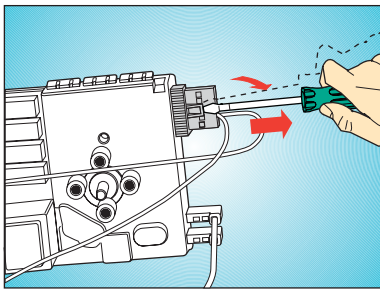
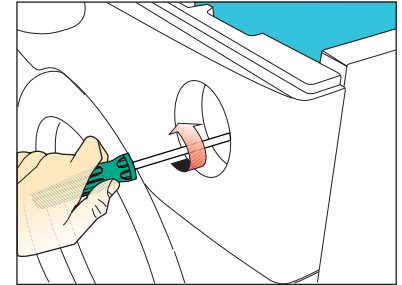
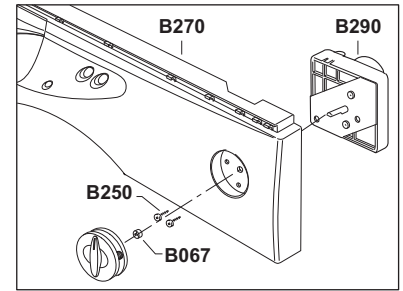
- Grasp the knob and pull it out gently.
- Remove the knob cover (B740) together with the pointer (B013) and cover plate (B730) by levering delicately on the lugs. Then carefully remove the pieces.
- Recover the two springs (B750), cam (B220) and spring (B067).
- To re-assemble, follow the same procedure in reverse order.



**Step 3**

**Removing and/or replacing the programmer (B290) from the control panel (B270):**

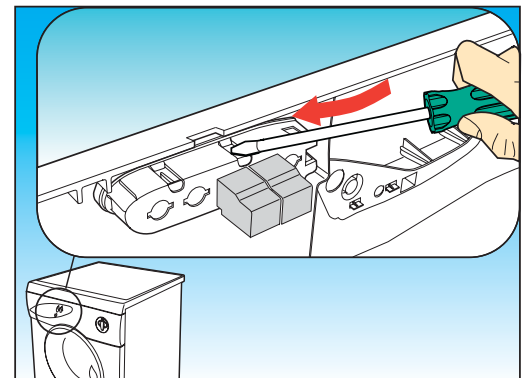
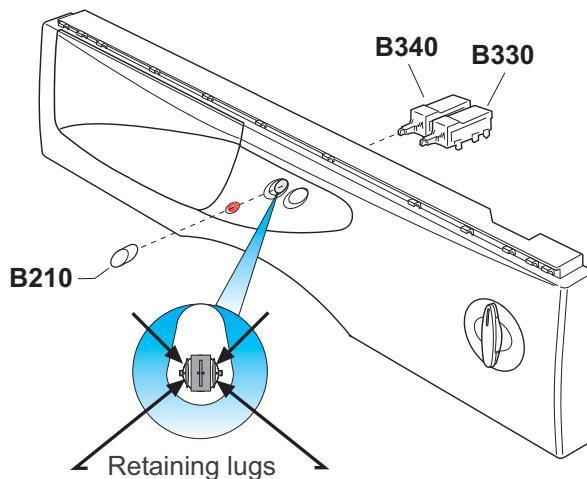
- (a) Remove the top cover (**Step 1**).
- (b) Remove the programmer knob by grasping it gently and pulling (**Step 2**).
- (c) Use a crosshead screwdriver to remove the two screws (**B250**) fixing the programmer (**B290**) to the control panel (**B270**).
- (d) To remove the electrical connections from the programmer, proceed as follows:
  - Use a flat screwdriver as a lever on the connector clip and remove the connector.
  - Use the pliers to remove the other electric wires, noting their positions.
- (e) To re-assemble, follow the same procedure in reverse order, taking care to check that the wire colours and markings correspond to the appliance's wiring diagram.



**Step 4**

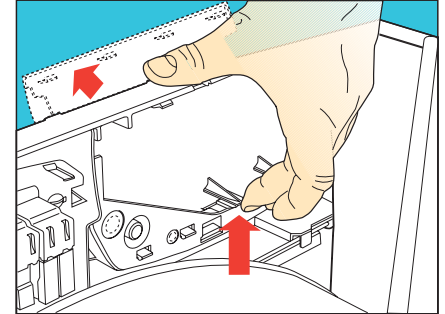
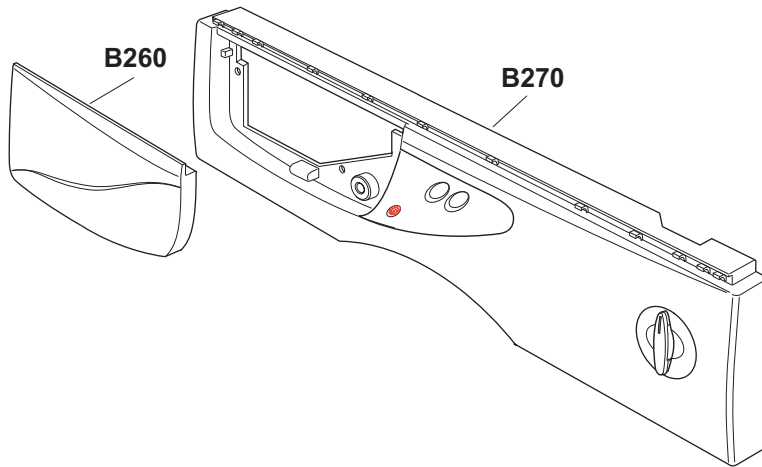
**Removing and/or replacing the buttons (B210) and switches (B330-B340) from the control panel:**

- (a) Remove the top cover (**Step 1**).
- (b) To remove the buttons (**B210**), insert the point of a screwdriver in the button mounting slot on the inside of the control panel and then push the button outwards.
- (c) To remove the switches (**B330-B340**) from the front of the control panel, use a screwdriver as a lever on the retaining lugs and then remove the switches.
- (d) Disconnect the wiring noting the positions of the wires.
- (e) To re-assemble, follow the same procedure in reverse order.



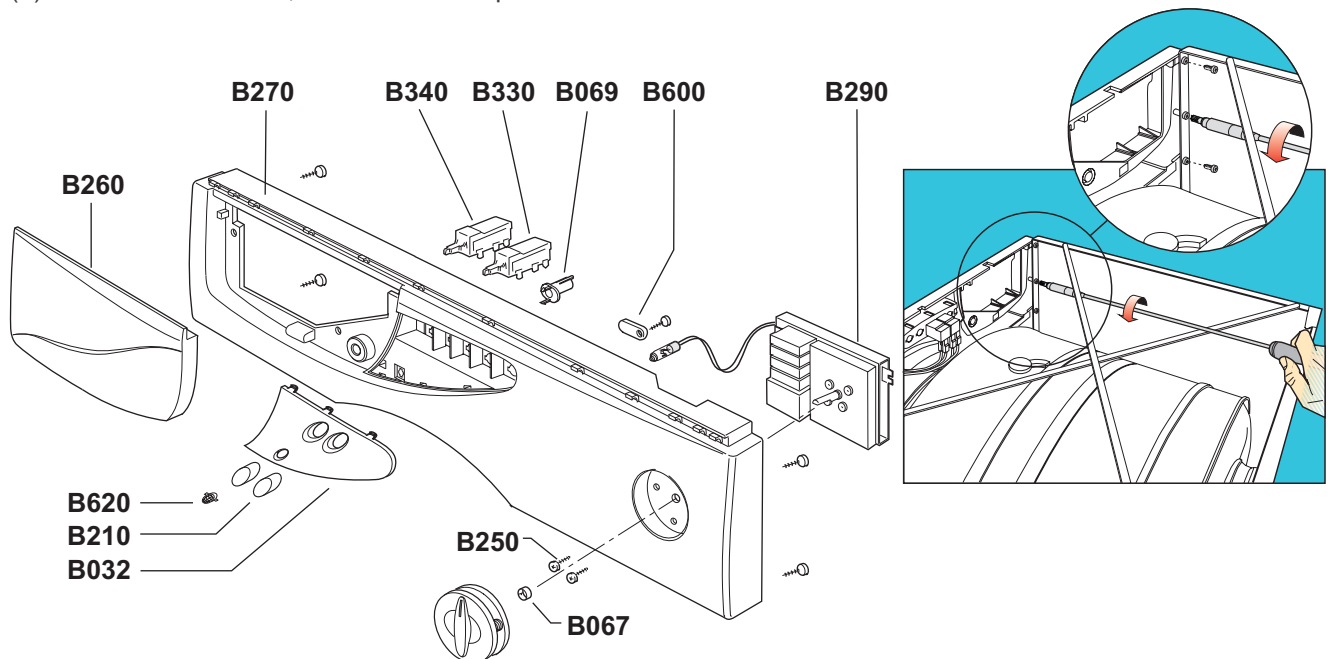
## Step 5 Removing and/or replacing the cover piece (B260) from the control panel (B270):

- (a) Remove the top cover (**Step 1**).
- (b) From inside the control panel (B270), release the retaining lugs holding the cover piece (B260) and remove it from the front.
- (c) To re-assemble, follow the same procedure in reverse order.



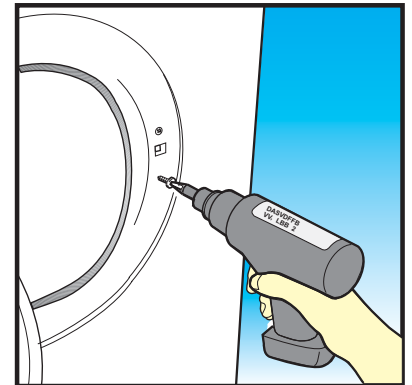
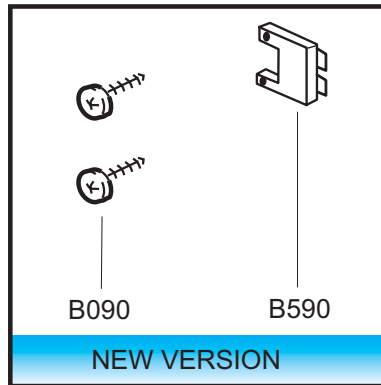
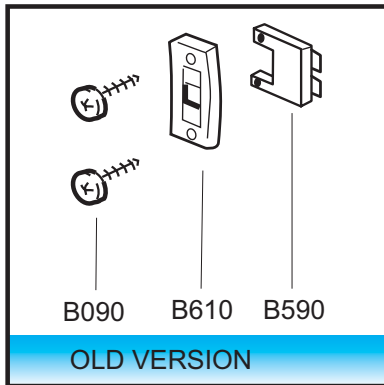
## Step 6 Removing and/or replacing the control panel (B270):

- (a) Remove the top cover (**Step 1**).
- (b) Remove the programmer knob assembly (**Step 2**).
- (c) Remove the programmer (B290) (**Step 3**).
- (d) Remove the buttons (B210) and switches (B330-B340) (**Step 4**) without disconnecting the wiring.
- (e) Remove the warning light (B280).
- (f) From inside the control panel (B270), release the plastic retaining lugs holding the cover piece (B260) and remove it from the front (**Step 5**).
- (g) Use a long crosshead screwdriver to remove the four screws fixing the control panel to the body of the appliance. Remove the control panel and release and recover the button mounting plate (B032), the indicator light insert (B069) and the cable clamp (B600).
- (h) To re-assemble, follow the same procedure in reverse order.



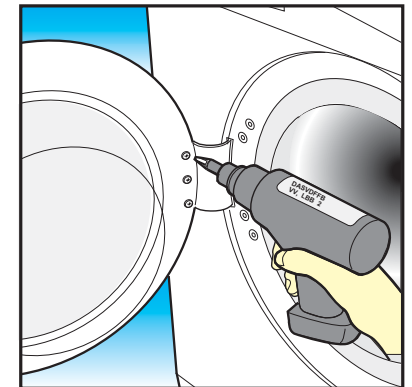
## Step 7 Removing and/or replacing the door microswitch (B590):

- Remove the top cover (**Step 1**).
- Open the door.
- Use a crosshead screwdriver to remove the two catch plate (**B610**) fixing screws (**B090**).
- In order to have better access to the door microswitch, it is advisable to remove the programmer from the control panel by following the relevant parts of **Step 3**.
- Disconnect the wiring and slide the switch upwards (**B590**).
- Disconnect the wiring and replace the electric component.
- To re-assemble, follow the same procedure in reverse order.



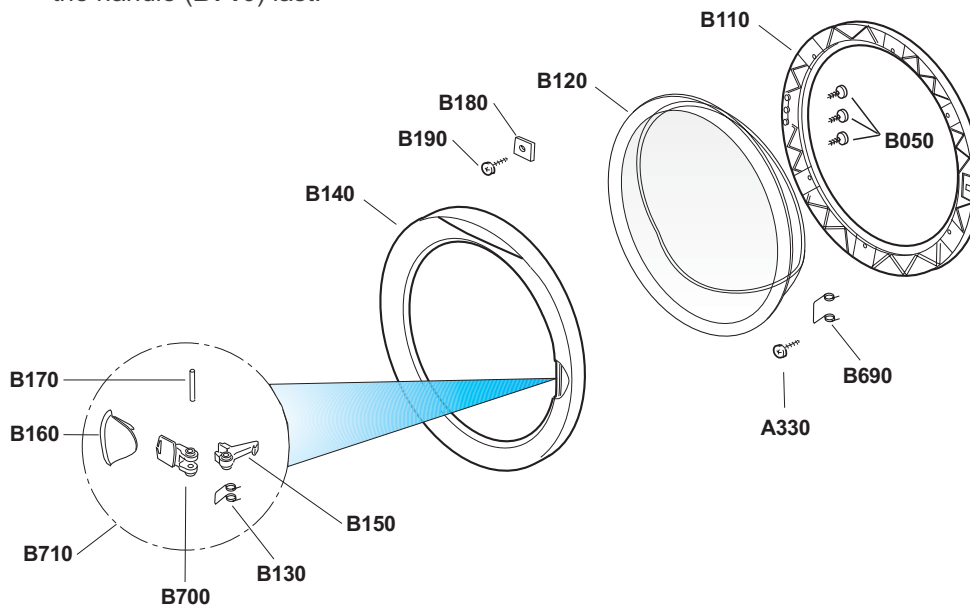
## Step 8 Removing the door:

- Open the door and use a cross-head screwdriver to remove the three screws (B050) fixing the door to the hinge
- To re-assemble, follow the same procedure in reverse order.



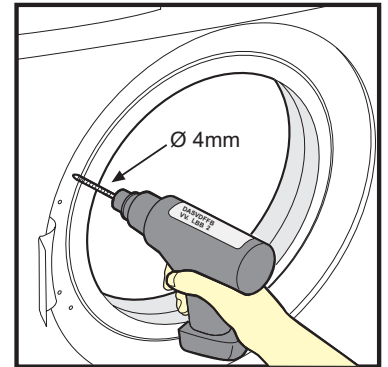
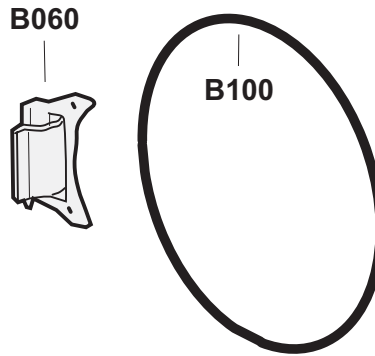
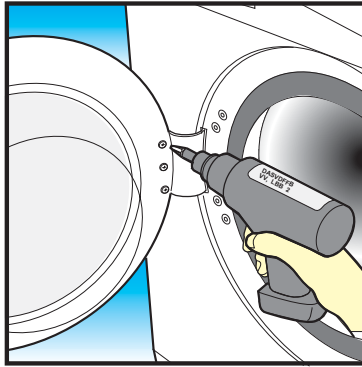
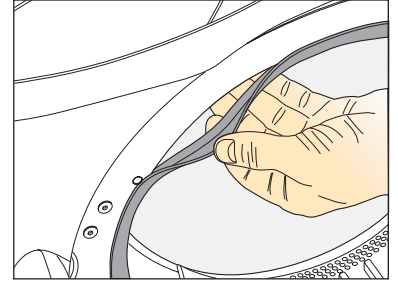
## Step 9 Removing the door glass (B120):

- Remove the door handle assembly (**B710**) following **Step 11**.
- Unscrew the six screws (**B190**) and remove the six glass fixing plates (**B180**). Then remove the glass.
- To re-assemble, follow the same procedure in reverse order, taking care to assemble the handle (**B710**) last.



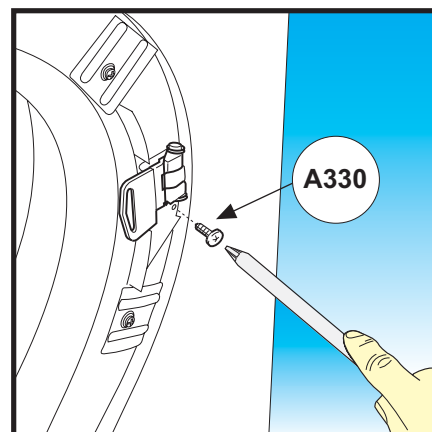
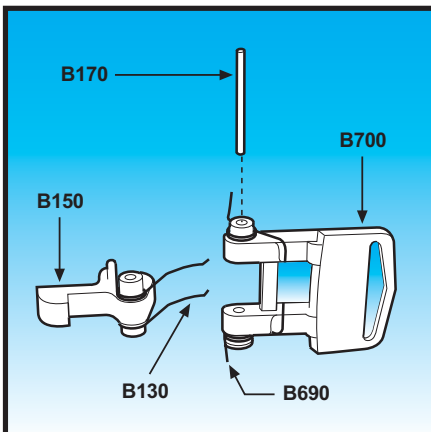
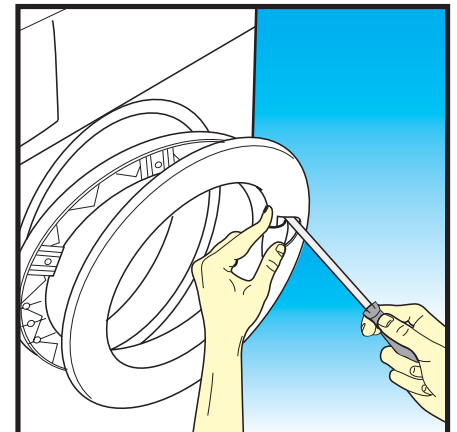
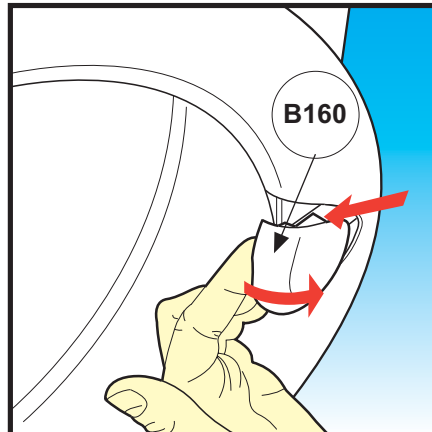
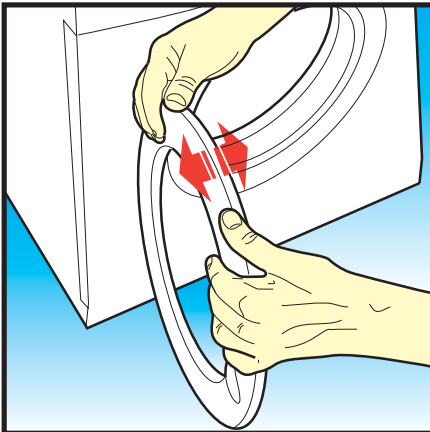
## Step 10 Removing the door hinge (B060):

- Remove the door following **Step 8**.
- Remove rubber door seal (**B100**) (hinge side) in order not to damage it during the next operation.
- Use a drill and  $\text{Ø}4 \text{ mm}$  bit to drill out the four rivets (**B080**) fixing the hinge (**B060**) to the appliance body, taking care not to damage the drum support surround (A340) inside the appliance.
- Extract the rivets from the front panel and remove the hinge.
- To re-assemble, follow the same procedure in reverse order.



## Step 11 Removing the door handle (B710):

- Open the appliance door.
- Lever off the top part of the door surround using your hands to access the two screws (**A330**) securing the handle return spring (**B690**). Then remove the screws using a crosshead screwdriver.
- Remove the spring (**B690**) noting its position, then extract the handle assembly.
- To re-assemble, follow the same procedure in reverse order, taking care to assemble the handle (**B160**) last.

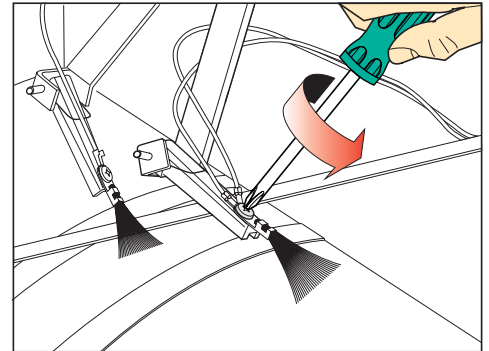
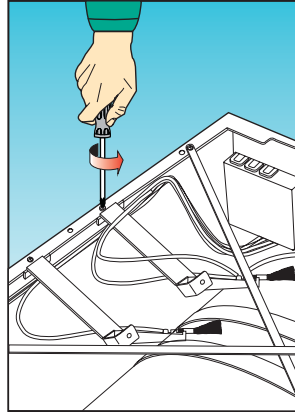
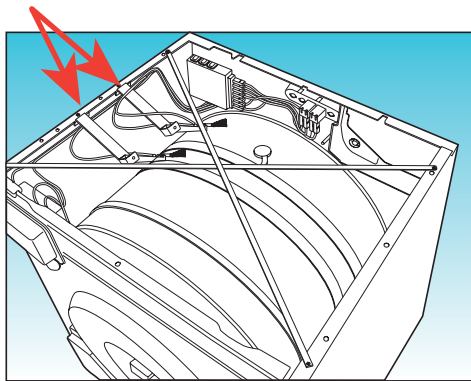
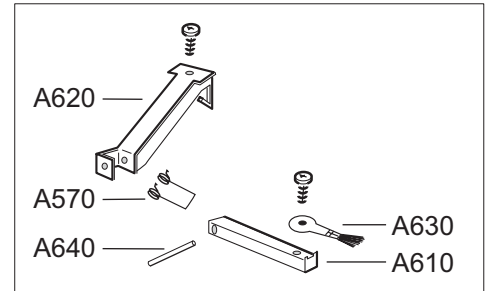


## Step 12

Removing the brush support brackets and relative humidity sensing brushes, consisting of:

- A620 Support bracket
- A610 Brush holder
- A630 Humidity sensing brush
- A640 Pin
- A570 Spring

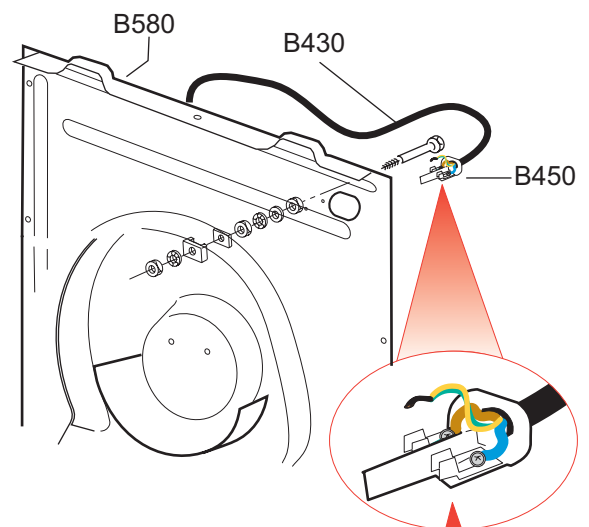
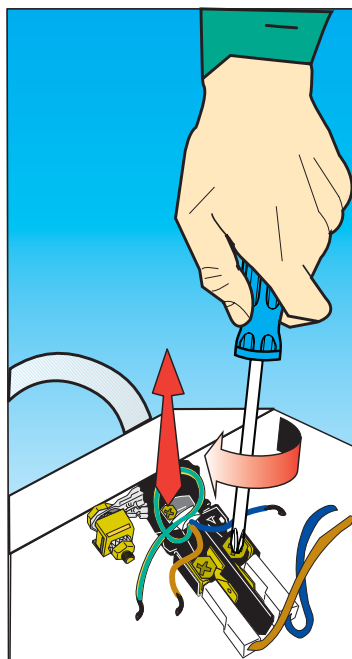
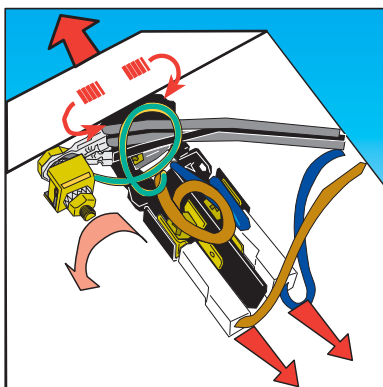
- (a) Remove the top cover (**Step 1**).
- (b) Use a crosshead screwdriver to remove the fixing screws securing the brush support bracket to the appliance body.
- (c) Use a crosshead screwdriver to remove the fixing screw securing the electric wiring to the brush holder.
- (d) To re-assemble, follow the same procedure in reverse order.



## Step 13

Removing and/or replacing the power supply cable (B430) and/or terminal block (B450):

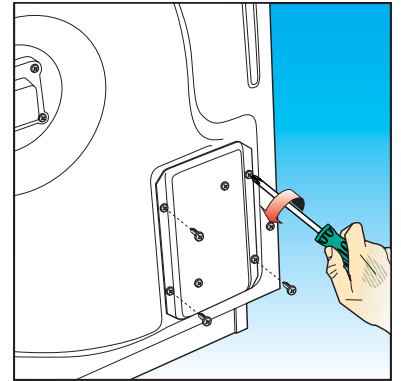
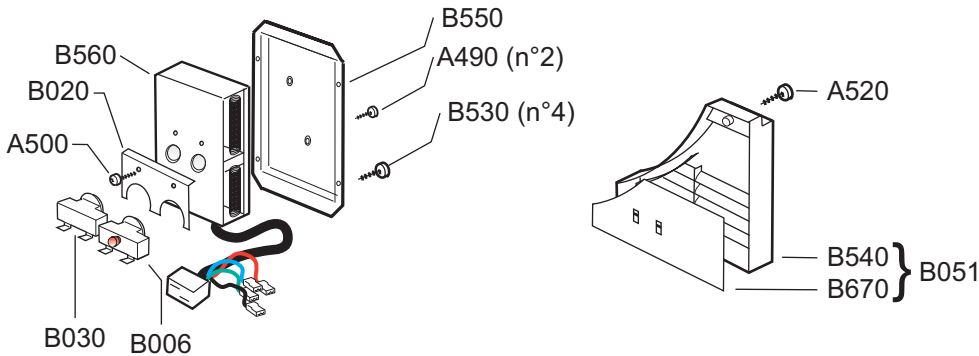
- (a) Remove the top cover (**Step 1**).
- (b) To replace the terminal block (**B450**): disconnect the wires from the harness connected to the terminal block (**B450**). Use a 7 mm spanner to slacken the locknut of the supply earth unit and remove the earth wire. Press the two retaining tabs at the sides of the terminal block and pull from behind.
- (c) To replace the power supply cable (**B430**): Use a crosshead screwdriver to slacken the two cable terminal fixing screws. Use a 7 mm spanner to slacken the locknut of the supply earth unit and remove the earth wire. Use a crosshead screwdriver to slacken the power supply cable clamp screw and remove the cable. To re-assemble, follow the same procedure in reverse order.





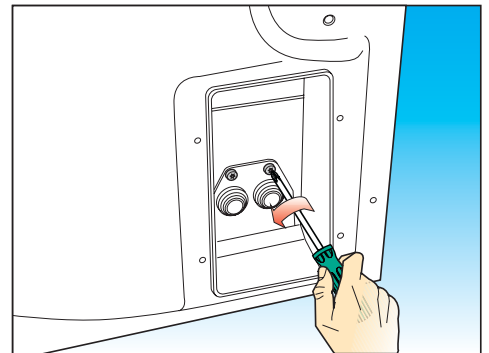
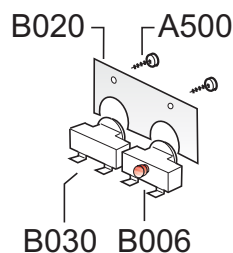
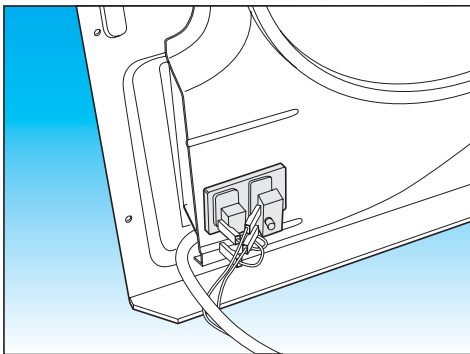
## Step 14 Removing and/or replacing heater element (B560) and air inspection cover (B051):

- From the back of the drier, use a crosshead screwdriver to remove the four fixing screws (B530) securing the heater element mounting cover (B550).
- Remove the two fixing screws (A490) securing the heater element (B560).
- Remove the fixing screw (A520) securing the air intake cover assembly (B051).
- Disconnect the heater element terminal block at the bottom of the drier, then remove the heater element (B560).  
To replace the heater element:  
Disconnect the contacts of the thermostats (B006)(B030), noting their positions and recover:  
- the maximum temperature thermostat (B006)  
- the manual reset safety thermostat (B030)  
- the thermostat plate (B020)  
- the 2 thermostat plate fixing screws (A500)
- To re-assemble, follow the same procedure in reverse order.



## Step 15A For driers produced prior to week 18 of 2003 Removing and/or replacing: - the manual reset safety thermostat (B006) - the automatic reset maximum temperature thermostat (B030)

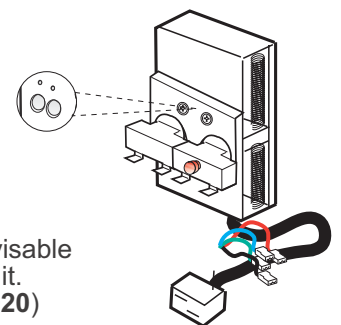
- Remove the top cover (B360) as described in **Step 1**.
- To improve access, it is advisable to remove the rear panel (B580) following **Step 16**, dismantling only those parts necessary.
- Remove the cover (B550) together with the heater element (B560) following **Step 14**, making sure that the electric wiring is disconnected.
- Remove the two fixing screws (A500) securing the galvanised plate (B020), then remove the thermostat to be replaced.
- To re-assemble, follow the same procedure in reverse order.



## Step 15B For driers produced from week 18 of 2003 (from serial number 200318...) Technical Information code 46600021

Removing and/or replacing:  
- the manual reset safety thermostat (B006)  
- the automatic reset maximum temperature thermostat (B030)

- Remove the heater element mounting cover (B550) (**Step 14**)
- In order to have better access to the heater element terminal block, it is advisable to remove the air intake inspection cover (B051) (**Step 14**) and disconnect it.
- Remove the 2 screws (A500) anchoring the thermostat mounting plate (B020) and replace.
- To re-assemble, follow the same procedure in reverse order.



**For driers produced prior to week 18 of 2003**

**Step 16A**

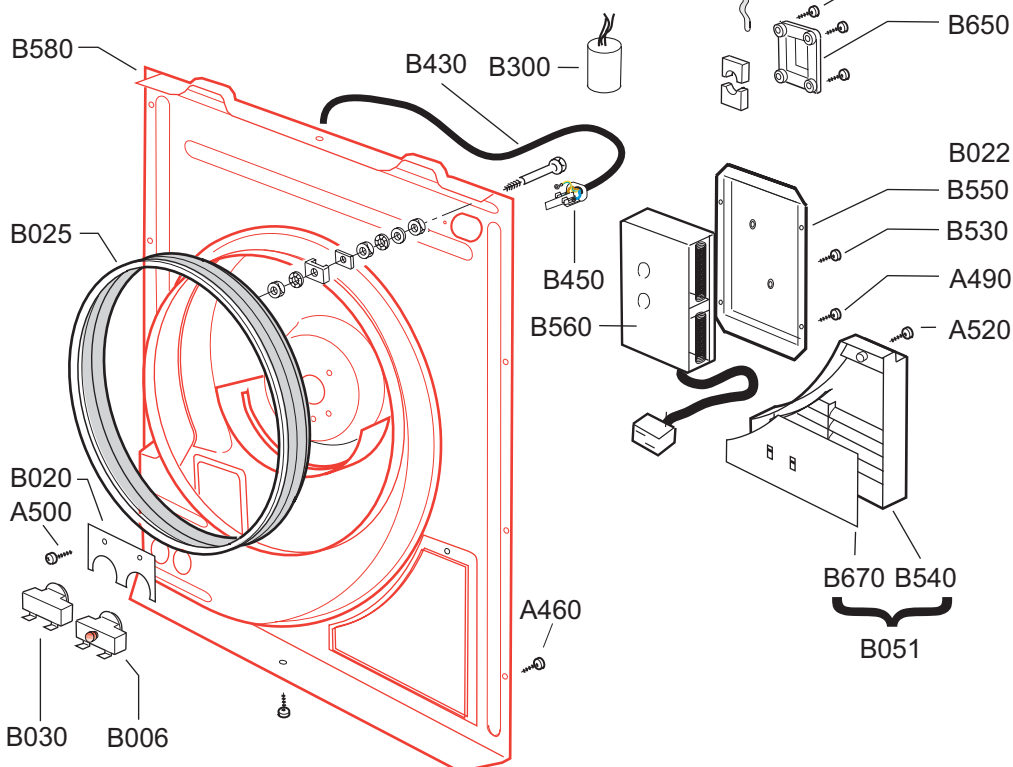
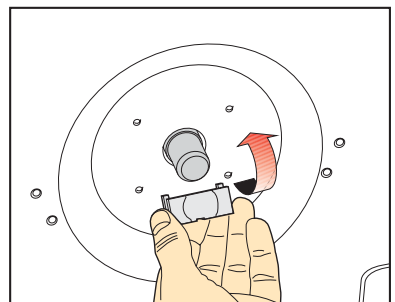
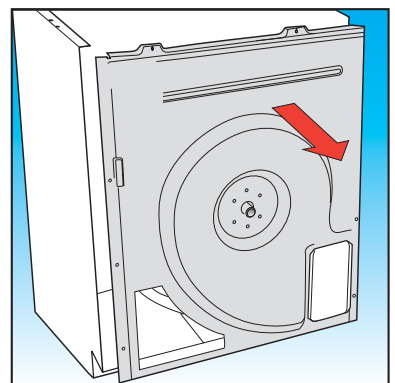
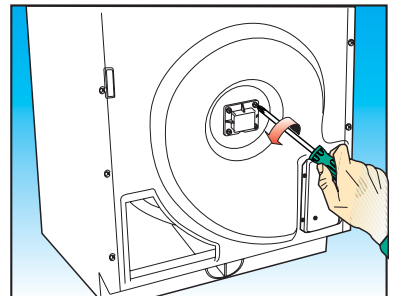
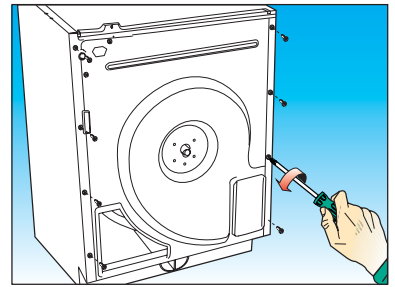
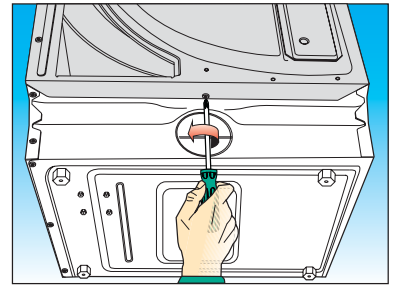
**Removing and/or replacing the rear panel (B580):**

- (a) Remove the top cover (**Step 1**).
- (b) Remove the power supply cable.
- (c) From the back of the drier, use a crosshead screwdriver to remove the lower fixing screw securing the rear panel (**B580**).
- (d) Remove the four fixing screws (**A470**) securing the drum shaft support cover (**B650**), and then remove the drum shaft support (**B640**).
- (e) Remove the eight fixing screws (**A460**) securing the rear panel, then remove the panel (**B580**).

NB: When replacing the rear panel (**B580**), recover all the components fixed to it (see exploded view):

- A460 Body Fixing Screw
- A470 Support cover fixing screw
- A500 Thermostat Plate fixing screw
- A520 Air Intake Cover Fixing Screw
- A540 Earth Plate fixing screw
- B006 Manual Reset Safety Thermostat
- B020 Thermostat plate
- B025 Rear Drum Gasket
- B030 Maximum Temperature Thermostat
- B051 Air Intake Inspection Cover + Welded Protection
- B300 Suppressor Coil
- B450 Terminal Block
- B530 Heater Element Mounting Cover Fixing Screw
- B540 Air Intake Inspection Cover
- B550 Heater Element Mounting Cover
- B560 Heater Element
- B640 Drum Shaft Support
- B650 Drum Shaft Support Flange
- B670 Inspection Cover Protection

- (f) To assemble, follow the same procedure in reverse order, remembering to temporarily insert the drive belt (**A290**) around the drum (**A300**) (**Step 18**). Then reconnect the motor terminal block and heater element wiring. When replacing the drum shaft support only (**B640**), apply the grease supplied as spare part number **190013800** on the inside part in contact with the drum shaft. Make sure that the teeth of the drum shaft support are facing the rear panel.



**For driers produced from week 18 of 2003 ( from serial number 200318...)**  
**Technical Information code 466000021**

**Step 16B**

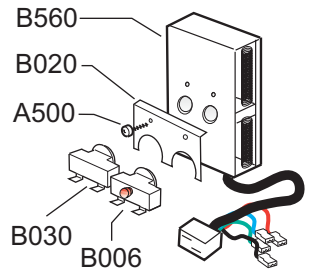
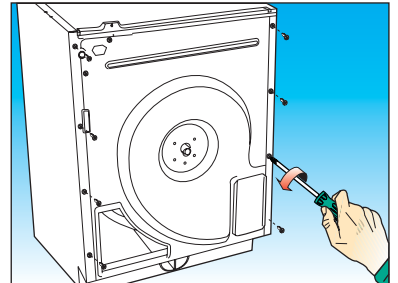
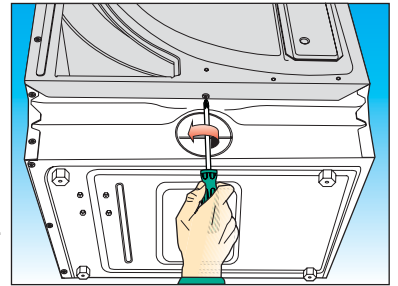
**New Version**

**Removing and/or replacing the rear panel (B580):**

- (a) Remove the top cover (**Step 1**).
- (b) Remove the power supply cable (**B430**) with terminal block (**B450**)
- (c) From the back of the drier, use a crosshead screwdriver to remove the lower fixing screw securing the rear panel (**B580**).
- (d) Remove the four fixing screws (**A470**) securing the drum shaft support cover (**B650**), and then remove the drum shaft support (**B640**).
- (e) Remove the eight fixing screws (**A460**) securing the rear panel, then remove the panel (**B580**).

NB: When replacing the rear panel (**B580**), recover all the components fixed to it (see exploded view):

- A460 Body Fixing Screw
- A470 Support cover fixing screw
- A500 Thermostat Plate fixing screw
- A520 Air Intake Cover Fixing Screw
- A540 Earth Plate fixing screw
- B006 Manual Reset Safety Thermostat
- B020 Thermostat Plate
- B025 Rear Drum Gasket
- B030 Maximum Temperature Thermostat
- B051 Air intake Inspection Cover + Welded Protection
- B300 Suppressor Coil
- B450 Terminal Block
- B530 Heater Element Mounting Cover Fixing Screw
- B540 Air Intake Inspection Cover
- B550 Heater Element Mounting Cover
- B560 Heater Element
- B640 Drum Shaft Support
- B650 Drum Shaft Support Flange
- B670 Inspection Cover Protection

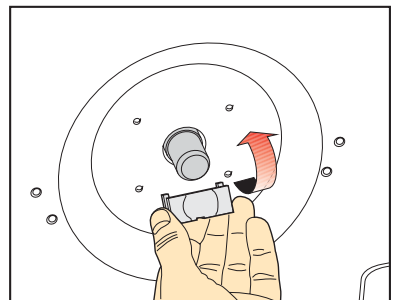
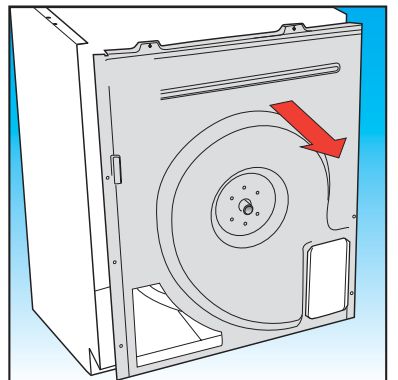
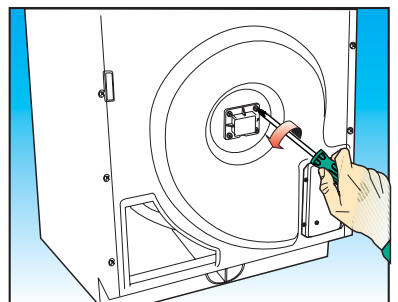
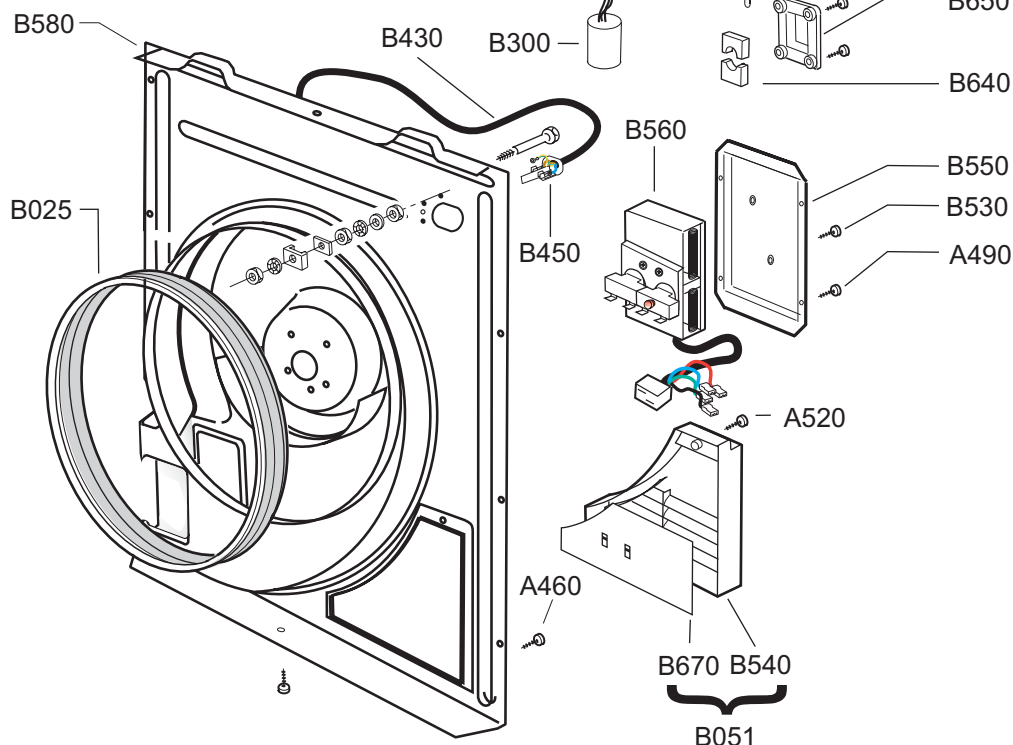


- (f) To re-assemble, follow the same procedure in reverse order, taking care to insert the belt (**A290**) temporarily around the drum (**A300**) (**Step 18**).

Then reconnect the motor terminal block and the heater element wiring.

When replacing the drum shaft support only (**B640**), apply the grease supplied as spare part number **190013800** on the inside part in contact with the drum shaft.

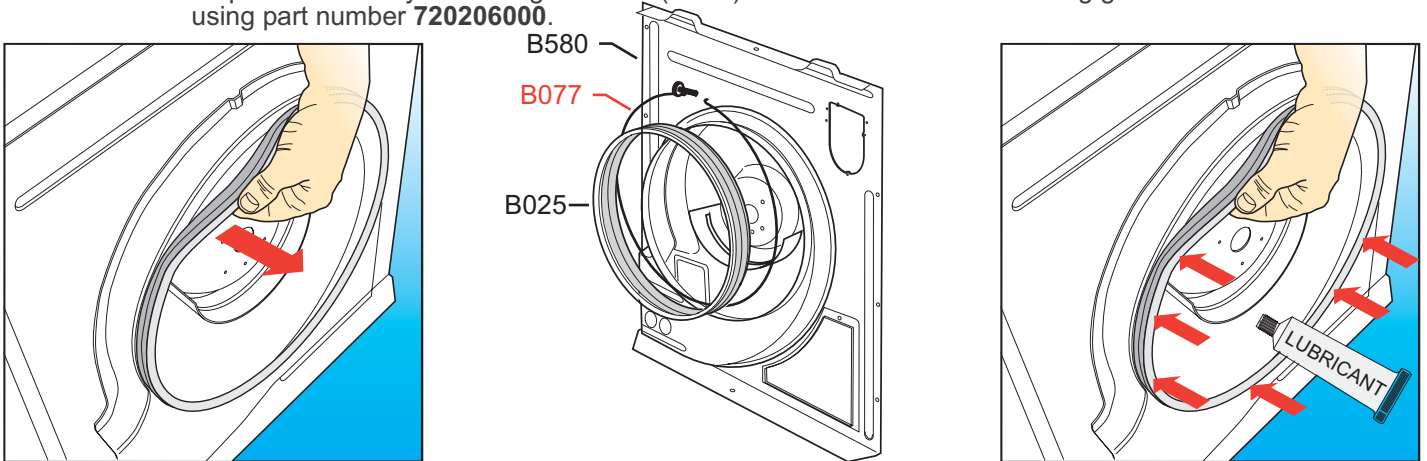
Make sure that the teeth of the drum shaft support are facing the rear panel.



## Step 17 Removing and/or replacing the rear drum seal with felt (B025):

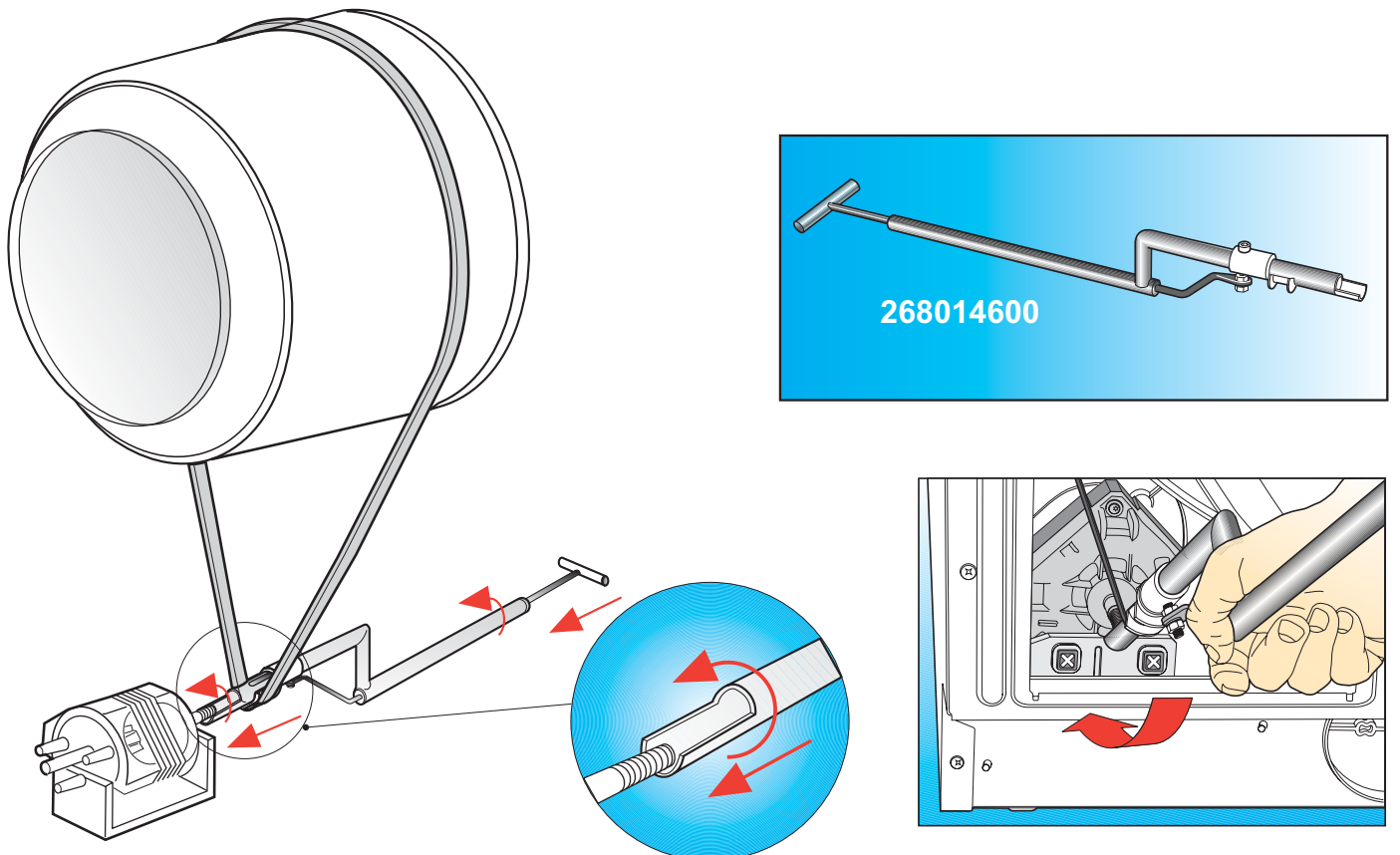
- Remove the top cover (B360) as described in **Step 1**.
- Remove the rear panel (B580) following **Step 16**, dismantling only those parts necessary.
- Only for machines produced after week n°43 year 2003  
**Technical Information code 466000033**  
 Use a crosshead screwdriver to remove the screwed clamping ring (B077)
- Manually remove the seal with the felt (B025).
- To re-assemble, follow the same procedure in reverse order, taking care to reposition the seal correctly. Spread some lubricating grease over the entire surface of the white felt.

NB: A special assembly consisting of a seal (B025) with a container of lubricating grease can be ordered using part number **720206000**.



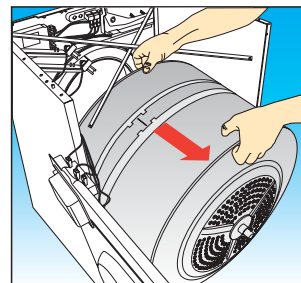
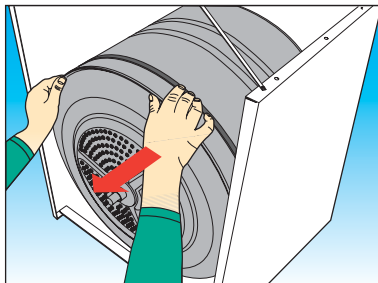
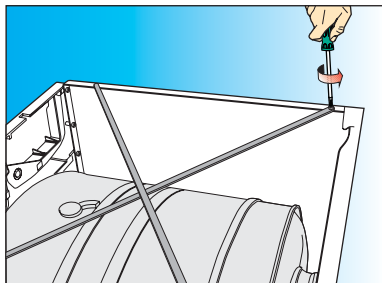
## Step 18 Removing and/or replacing the drive belt (A290):

- Remove the top cover (B360) as described in **Step 1**.
- Remove the rear panel (B580) following **Step 16**, dismantling only those parts necessary.
- Manually remove the belt (A290) from the drum and motor.
- To re-assemble, use special tool number **268014600**, supplied as a spare part. To position the belt, insert it in the slot of the rear panel. Hook up the belt as shown in the figure below, then press to slide the belt onto the motor shaft. Gently rotate the tool and remove it. Rotate the drum manually to check the correct alignment of the belt (if the alignment is not perfect, repeat the operation).



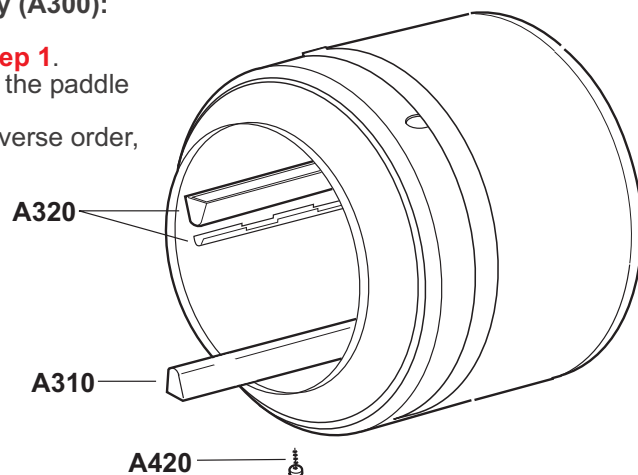
## Step 19 Removing and/or replacing the drum assembly (A300):

- (a) Remove the top cover (B360) as described in **Step 1**.
  - (b) Remove the rear panel (B580) following **Step 16**, dismantling only those parts necessary.
  - (c) Manually remove the belt (A290) from the drum and motor.
  - (d) Remove the two fixing screws (A510) securing the tie rods (B350) to the back of the drier. Push the side panels apart and extract the drum.
- T To re-assemble, follow the same procedure in reverse order, following **Step 18** to replace the belt.



## Step 20 Replacing and/or removing the drum paddle with probe (A320) and/or the drum paddle without probe (A310) from the drum assembly (A300):

- (a) Remove the top cover (B360) as described in **Step 1**.
- (b) Remove the three fixing screws (A420) securing the paddle to be replaced.
- (c) To re-assemble, follow the same procedure in reverse order, following **Step 18** to replace the belt.

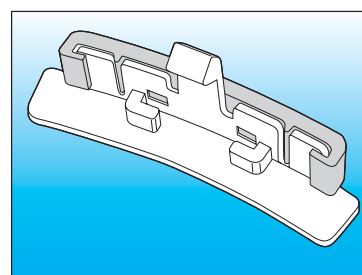
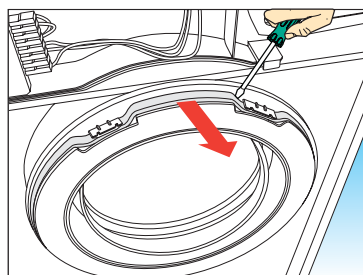
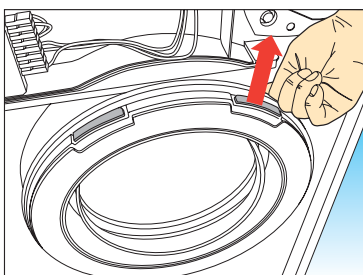


## Step 21 Replacing and/or removing the slide blocks (A530) and the felt seal (A410) from the drum support surround (A340):

- (a) Remove the top cover (B360) as described in **Step 1**.
- (b) Remove the rear panel (B580) following **Step 16**, dismantling only those parts necessary.
- (c) Manually remove the belt (A290) from the drum and motor.
- (d) Remove the two fixing screws (A510) securing the tie rods (B350) to the back of the drier. Push the side panels apart and extract the drum.
- (e) Press on the rear lug of the slide block (A530) with one hand and remove the block. At this point the felt seal (A410) can be removed using a screwdriver.

NB: When replacing either the slide blocks or the felt seal, it is advisable to fit both new slide blocks (A530) and a new seal (A410). A kit is available for this operation and can be ordered as spare part number **720208100**. The kit also contains the two-sided adhesive tape for fixing the felt seal.

- (f) To re-assemble, follow the same procedure in reverse order, following **Step 18** to replace the belt.

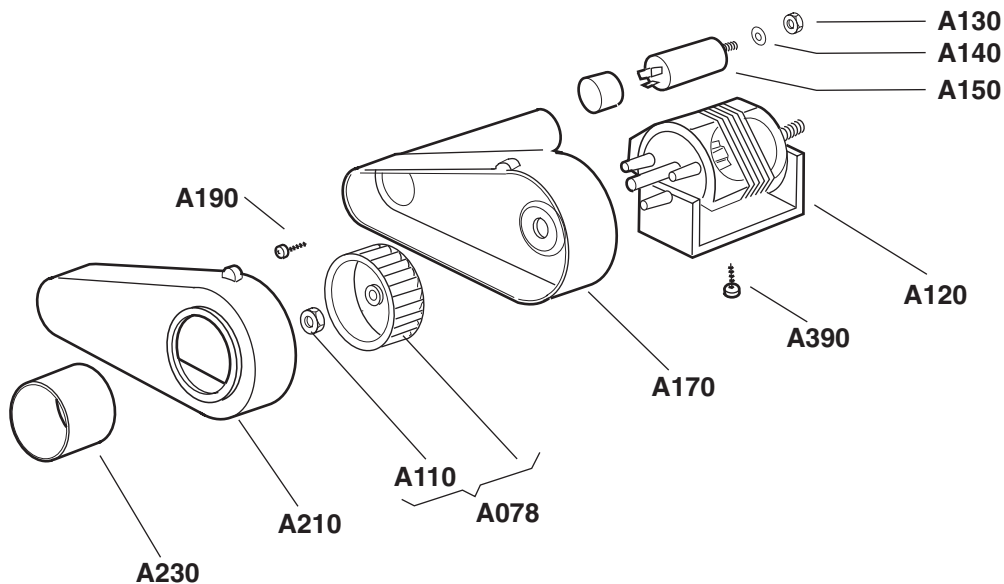
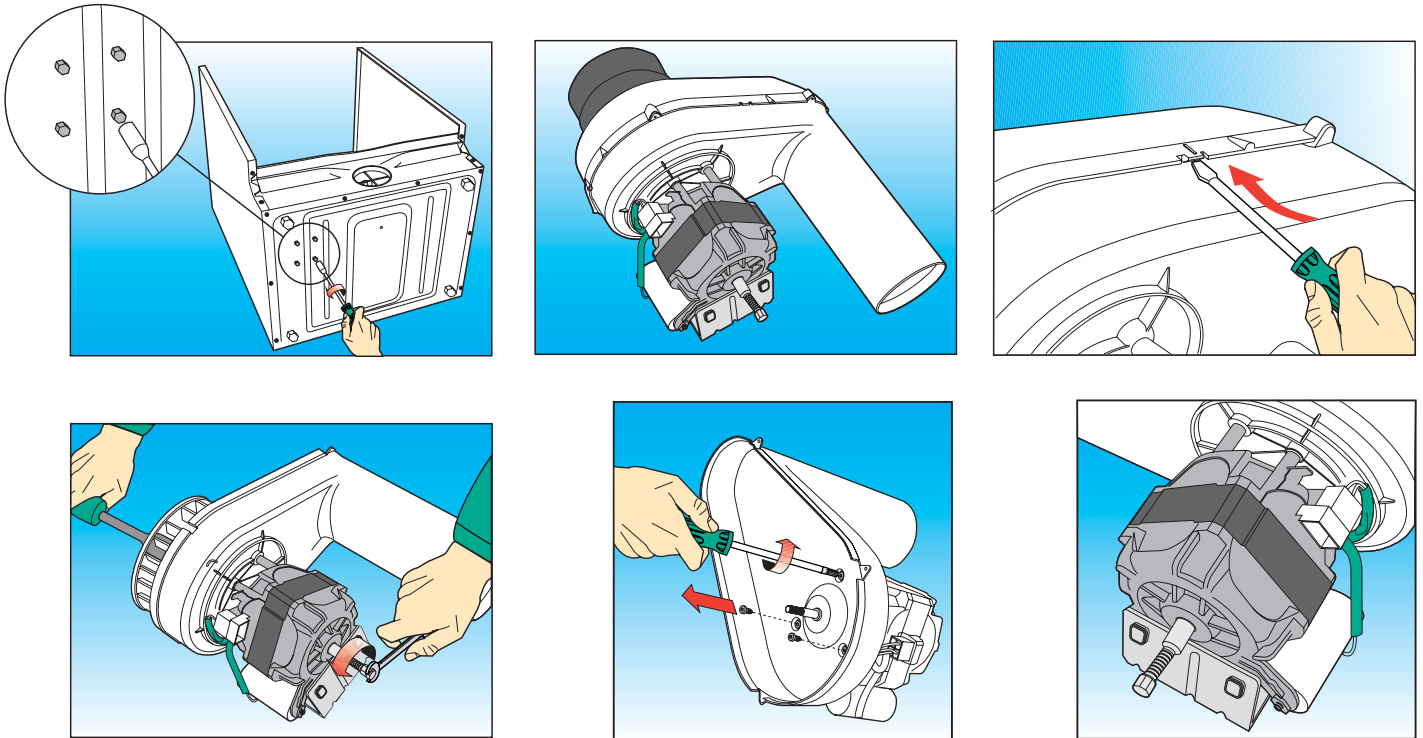


**Step 22** Removing and/or replacing the motor (A120):

- (a) Remove the top cover (B360) as described in **Step 1**.
- (b) Remove the rear panel (B580) following **Step 16**, dismantling only those parts necessary.
- (c) Manually remove the belt (A290) from the drum and motor.
- (d) Remove the two fixing screws (A510) securing the tie rods (B350) to the back of the drier. Push the side panels apart and extract the drum.
- (e) Lie the machine on its front on a piece of cardboard to gain access to the components.
- (f) Disconnect the electric wiring and the earth wire from the motor.
- (g) Use a 10 mm box spanner to remove the four hexagonal head fixing screws (A390) while holding the motor from the other side to prevent it from falling. Remove the motor assembly by pulling it away from the rubber connector (A230). Use a flat screwdriver to release the blower casing (A170) and (A210) to gain access to the fan + nut (A078).
- (h) Use a 13 mm box spanner (fan side) and a 10 mm open-ended spanner (motor side) remove the fan (A078) from the motor (A120). Then unscrew the brass nut (A110).
- (i) At this point, remove the motor (A120) from the plastic blower housing (A170) using a cross-head screwdriver to remove the three fixing screws (A190). Then recover the condenser (A150) by unscrewing the nut using a 13 mm open-ended spanner.

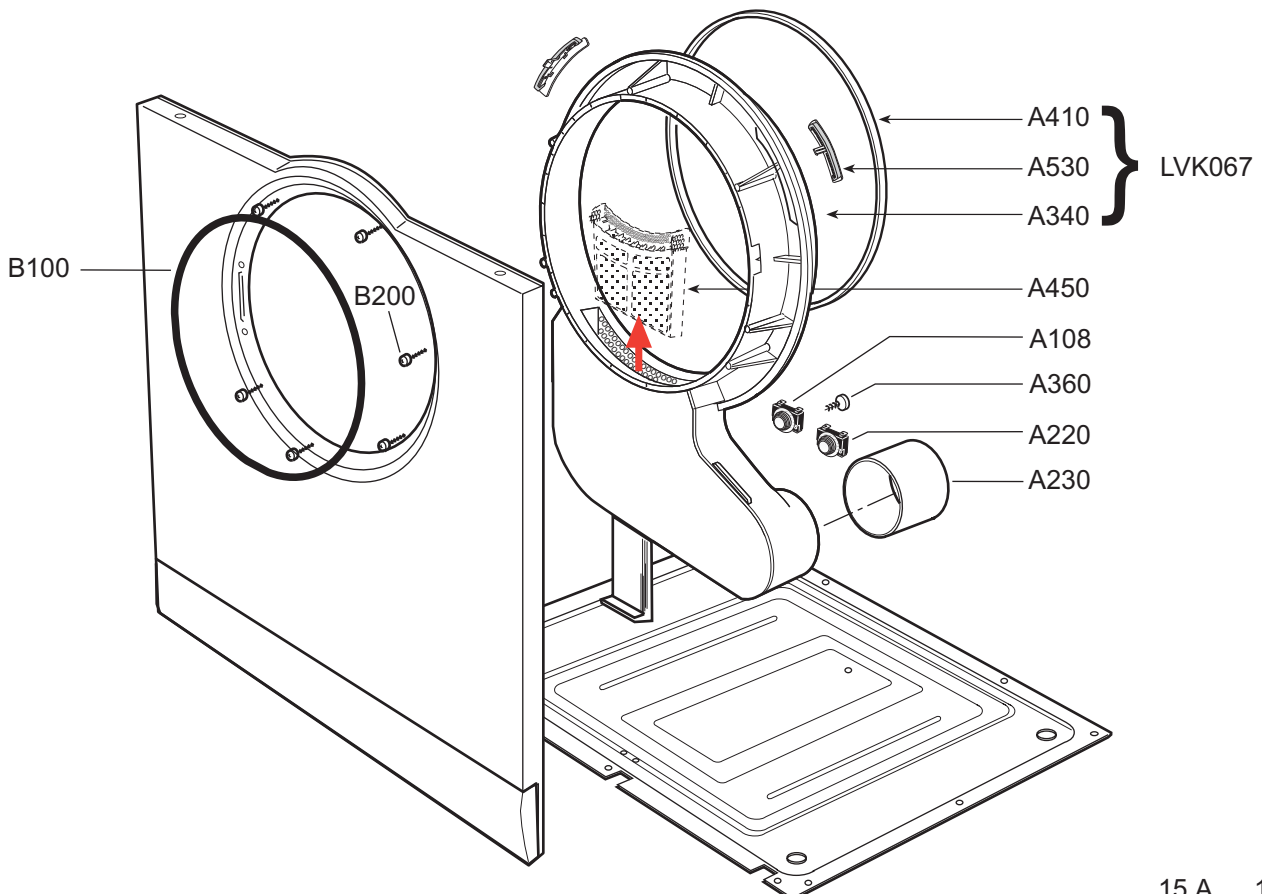
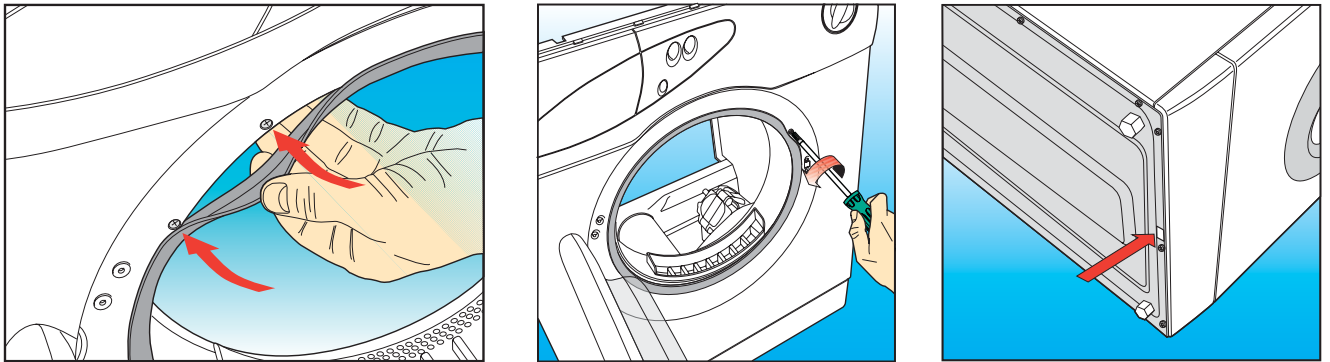
NB: When replacing the fan and/or motor, it is advisable to also replace the brass nut (A110) with a new one.

- (j) To re-assemble, follow the same procedure in reverse order, following **Step 19** to re-assemble the drum and then **Step 18** to refit the belt.



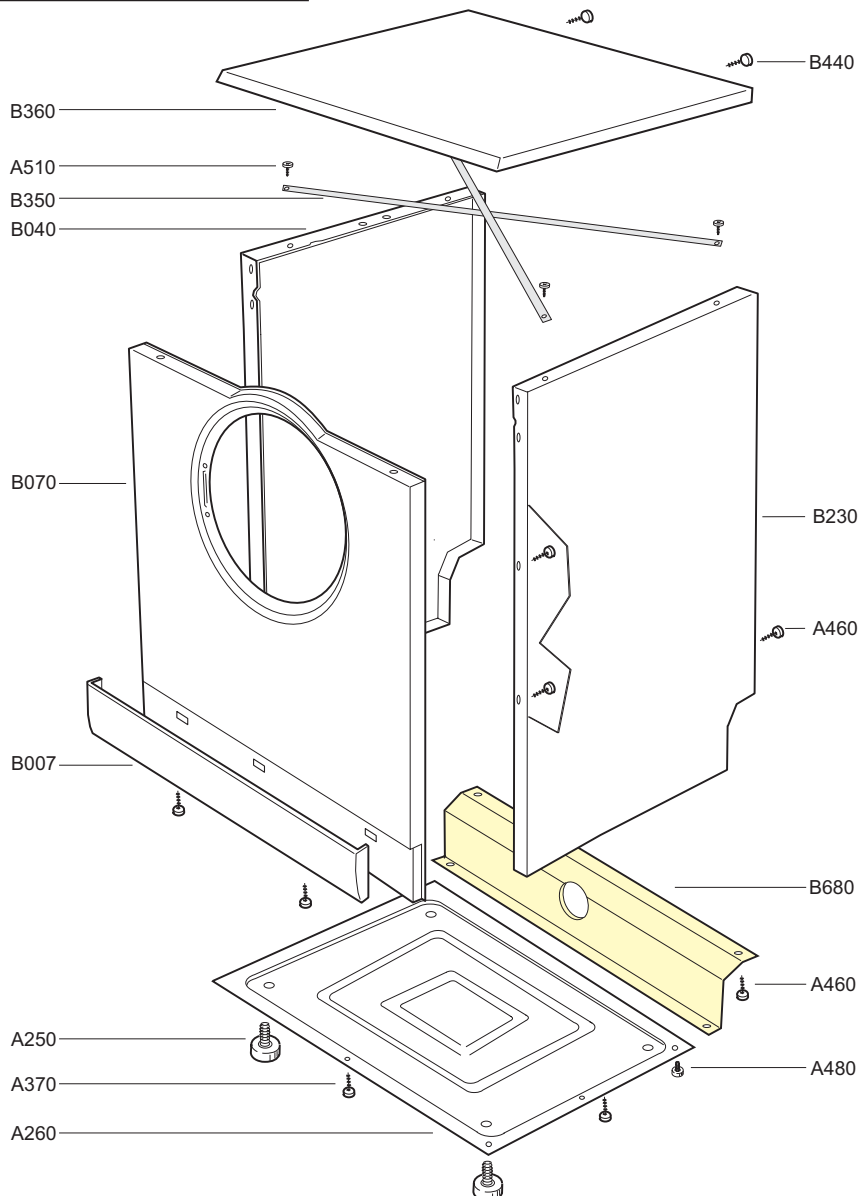
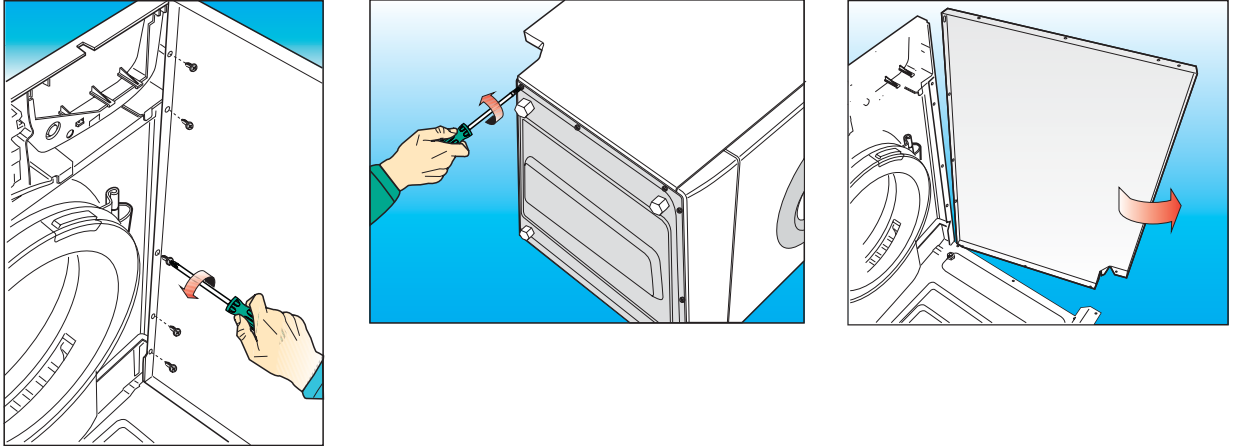
## Step 23 Removing and/or replacing the drum support surround (A340):

- (a) Remove the top cover (B360) as described in **Step 1**.
  - (b) Remove the rear panel (B580) following **Step 16**, dismantling only those parts necessary.
  - (c) Manually remove the belt (A290) from the drum and motor following **Step 18**.
  - (d) Remove the drum assembly (A300) following **Step 19**.
  - (e) Disconnect the wires from the two thermostats (A108) and (A220) noting their positions.
  - (f) Manually lift the door seal (B100) to gain access to the seven fixing screws (B200).  
Remove these screws using a screwdriver to release the drum support surround.
  - (g) Disengage the drum support surround from its lower housing (on the front part of the drier) and then remove it from the rubber coupling (A230).
- NB:** When replacing the drum support surround (A340), recover the following components for refitting:
- Filter housing (A450)
  - 95°C automatic reset safety thermostat (A108)
  - 50°C minimum temperature thermostat (A220)
- When ordering, it is advisable to specify the exploded view reference code **LVK067** in order to receive the Drum Support Surround (A340) already assembled with the Felt seal (A410) and Slide Blocks (A530).
- (h) To re-assemble, follow the same procedure in reverse order, following **Step 19** to re-assemble the drum and then **Step 18** to refit the belt.



## Step 24 Replacing and/or removing the left hand side panel (B040) and/or the right hand side panel (B230):

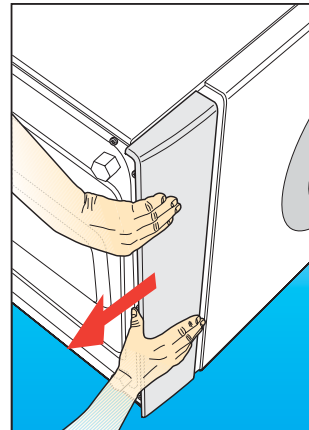
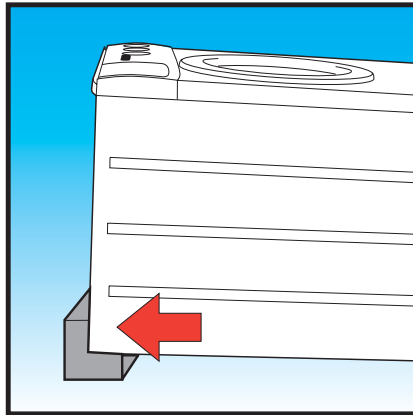
- (a) Remove the top cover (B360) as described in **Step 1**.
- (b) Remove the rear panel (B580) following **Step 16**, dismantling only those parts necessary.
- (c) Manually remove the belt (A290) from the drum and motor following **Step 18**.
- (d) Remove the drum assembly (A300) following **Step 19**.
- (e) Remove the five fixing screws (A480) from the front panel, then remove the screws securing the bottom panel (A260).
- (f) To re-assemble, follow the same procedure in reverse order, following **Step 19** to re-assemble the drum and then **Step 18** to refit the belt.





## Step 25 Removing and/or replacing the plastic plinth (B007) from the front panel (B070):

- (a) To carry out this operation, lean the drier backwards to gain access to the three plinth fixing screws. Remove these screws using a cross-head screwdriver.
- (b) Remove the plinth (B007) manually by sliding it downwards.
- (c) To re-assemble, follow the same procedure in reverse order, making sure that the plinth lugs enter the holes in the front panel.



## Step 26 Replacing the bottom panel (A260):

- (a) Remove the top cover (B360) as described in **Step 1**.
- (b) Remove the rear panel (B580) following **Step 16**, dismantling only those parts necessary.
- (c) Manually remove the belt (A290) from the drum and motor following **Step 18**.
- (d) Remove the drum assembly (A300) following **Step 19**.
- (e) Remove the five fixing screws (A480) from the front panel, then remove the screws securing the bottom panel (A260).
- (f) Remove the motor (A120) following **Step 22**. Remove the bottom panel (A260) fixing screws and recover the four adjustable feet (A250).
- (g) To re-assemble, follow the same procedure in reverse order, following **Step 19** to re-assemble the drum and then **Step 18** to refit the belt.

