

GE 5.8 Cu. Ft. Extra Large Capacity Front Load Dryer

Models --- DSXH47EG (Electric) & DSXH47GG (Gas)

Tech Manual --- Publication # 31-9148



- Rotary electronic controls with Cycles Status Lights
- Painted drum coated with a rust proof finish
- Four temperature options
- On/off end of cycle signal
- Seven dry cycles

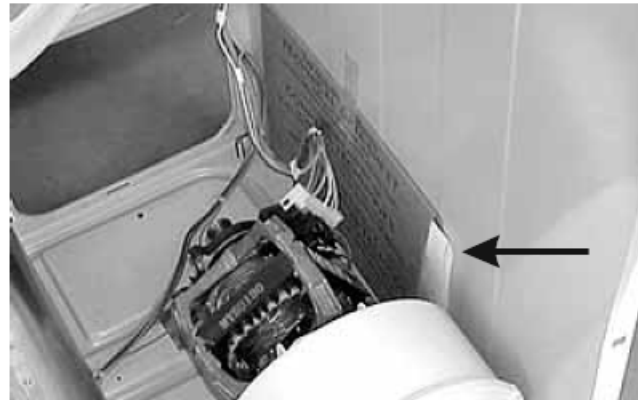
- Installation:
 - ✓ Free standing
 - ✓ Stacked on washer
 - ✓ Stacked on pedestal

Quick Reference

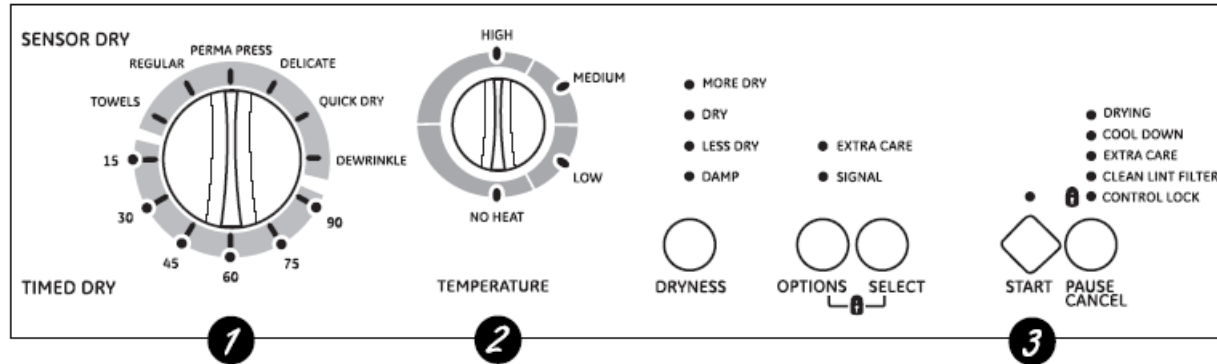
1. Serial nameplate location: On the front panel at the left side of the dryer door opening.



2. Tech sheet location: On the right-hand bodyside behind the front panel and inside rear access panel.



Control Panel Layout



Control Lock

To prevent accidental starting or stopping the dryer, press **OPTIONS** and **SELECT** at the same time until the Control Lock indicator is lighted. To unlock the Controls, press **OPTIONS** and **SELECT** again.

Service Error Codes

The electronic controls of the dryer have self diagnostics codes built in that cover most product failures.

When a failure occurs, the dryer stops or pauses. The control will beep and flash the **STATUS** lights to tell the customer that a failure has occurred. To stop the flashing and beeping, touch the **Pause Cancel** button. The error code remains stored in the control.

To view the error codes:

1. Rotate the cycle select knob to the 3 o'clock position.
2. Press and hold the **Select** and **Pause Cancel** buttons simultaneously for (6) seconds.
3. Immediately after, press and hold the **START** and **Pause Cancel** buttons simultaneously for (4) seconds.
4. Rotate the cycle select knob to the 2 o'clock position.

The four indicator lights of **Drying**, **Cool Down**, **Extra Care** and **Clean Lint Filter** will flash the number of times for the first digit of the code after the E, and the **START** indicator light will flash the number of times for the second digit after the E. The code is obtained by counting the number of times the lights flash. Example E24: the four indicator lights would flash twice indicating the 2 and the **START** indicator light will flash four times indicating the 4. The four indicator lights and the **START** indicator light will start flashing at the same time. The control will then pause for 2 seconds, then repeat the code.

Troubleshoot the problem by using the chart on the next page.

The error codes remain in memory until cleared from the control.

To move to the next code, press the **OPTIONS** button.

To clear code, press the **Select** button.

To exit this mode, simultaneously press and hold the **Select** and **Pause Cancel** buttons for (6) seconds.

Note: A letter appearing in the code stands for a number higher than nine.

A = 10
B = 11
C = 12
D = 13
E = 14
F = 15

Example Code E4A: the first digit would be 4 and the second digit would be 10. If this code would appear on a washer, the four indicator lights would blink four times and the **START** indicator light would blink ten times.

Error Codes

Error code	Fault condition	Action
E 10	Communication failure. - EEPROM	Clear code, exit mode and start dryer. If the error persists, replace the control board.
E 11	Communication failure. - Checksum	Clear code, exit mode and start dryer. If the error persists, replace the control board.
E 12	Communication failure. - Memory	Clear code, exit mode and start dryer. If the error persists, replace the control board.
E 24	Shorted control thermistor.	Remove wires from the control thermistor. Measure resistance of the thermistor. If the reading is not 50K (+/-10%), replace thermistor. If the reading is within 50K (+/-10%) check wiring between thermistor and electronic control. If good, replace electronic control.
E 25	Open control thermistor.	Remove wires from the control thermistor. Measure resistance of the thermistor. If the reading is not 50K (+/-10%), replace thermistor. If the reading is within 50K (+/-10%) check wiring between thermistor and electronic control. If good, replace electronic control.
E4A	The drying time has exceeded program time for that cycle.	Press Pause Cancel and Select buttons for 6 seconds to exit test modes. Position cycle selector to NORMAL, temperature selector to HIGH HEAT, and touch START. Check for any thing that would extend dry times, such as no heat, restricted vent, blower fan blade broken or loose, dryer installed in closet with solid door, or bad connection in moisture sensor bar circuit or dirty bars. If dryer operates normally but code returns, replace electronic control.
E 5B	No heat.	Refer to flow chart "dryer not heating properly."
E 68	One of the keys (buttons) is stuck closed (active).	Enter function test mode and perform key (button) test to determine which button is at fault. Carefully free the key and perform the test again. If button is free but the key stuck code still exists, replace electronic control.
E 8C	High limit thermostat has tripped too many times in a certain amount of time.	Check for blocked lint filter, blocked exhaust, air leaks around air duct, broken blower fan blades, worn or loose drum seals, dryer installed in closet with solid doors or door seal not correctly seated.
E AF	Microcontroller has been reset by internal Watchdog timer.	Clear code, exit mode and start dryer. If problem persists, replace electronic control.

Disassembly

Removing the Top Panel

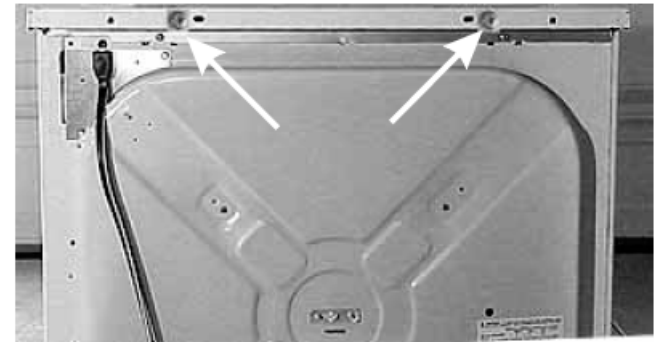
1. The top panel is held in place in the front by (3) plastic tabs on the console,



- (2) metal tabs (one on each side),



- and (2) screws in the rear.

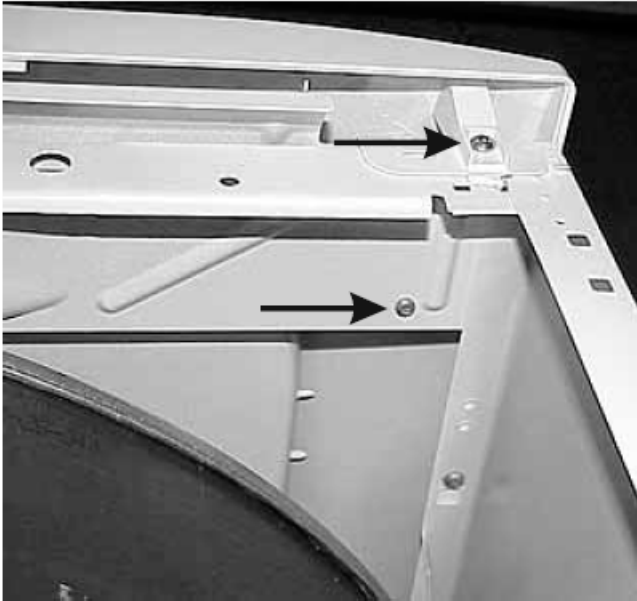


2. Remove the (2) screws, slide the top back about 1/2 inch and lift the top off.

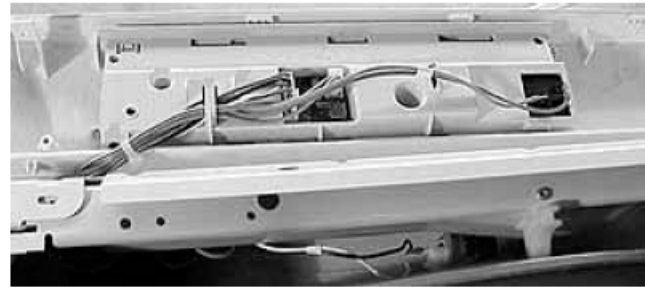
Disassembly

Removing the Console

1. Disconnect the dryer from electrical supply and remove the top panel.
2. Remove the (4) screws, (2 on each side), holding the console to the front panel and roll the console forward.



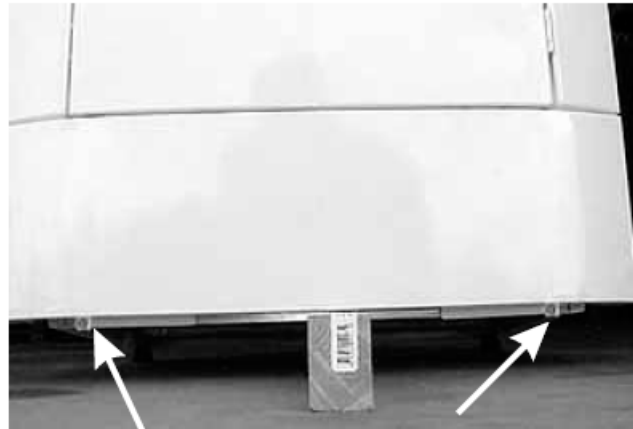
3. Disconnect the wiring from the control board and lift the console off.



Disassembly

Removing the Front Access Panel

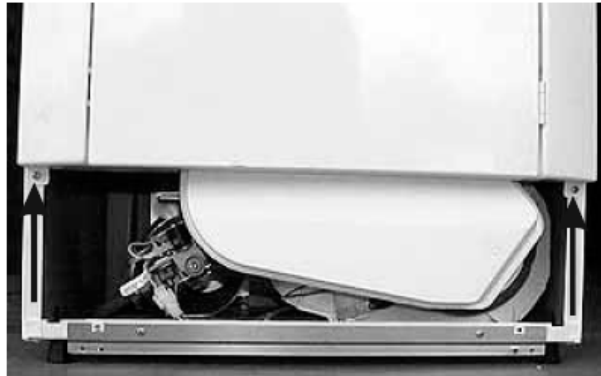
1. Place a 2x4 under the front of the dryer and remove the two screws holding the panel to the dryer base.



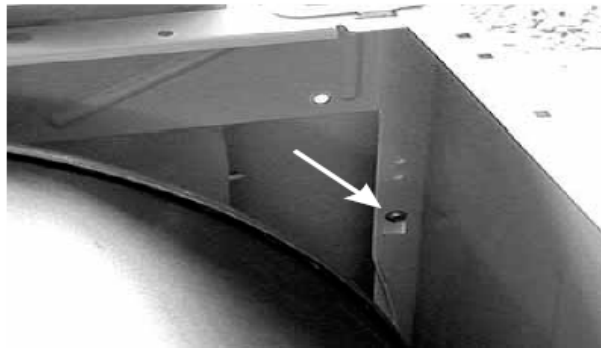
Disassembly

Removing the Front Panel

1. Disconnect the dryer from electrical supply, remove the console and front access panel.
2. Remove the (2) screws, one on each side, at the bottom holding the front panel to the bodysides.



3. Remove the (2) screws, one on each side about 8 inches down from the top, that secure the front panel to the bodysides.



4. Pull out on the bottom of the front panel to release the spring load tabs.



5. Lift up on the front panel to release the (2) tabs at the top, one on each end, and swing the panel out.

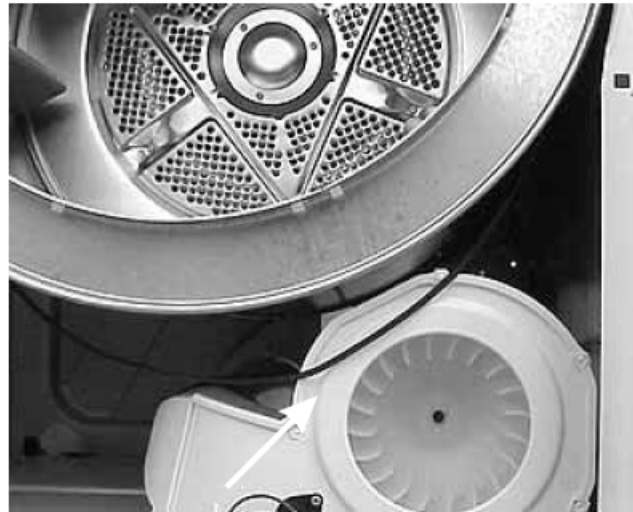


6. Disconnect the wiring from the drum light, the door switch, the ground wire, and the wiring harness from the sensor bars.

Disassembly

Removing the Belt

1. Disconnect the dryer from electrical supply.
2. Remove the top and front panels.
3. Release the belt from the motor.
4. From the front, slightly raise the front of the drum and slide the belt off.



Disassembly

Removing the Drum

1. Disconnect the dryer from electrical supply.
2. Remove the top and the front panels.
3. Release the belt from the motor.

4. Using the belt, raise rear of the drum to release the ball from the hitch and move the drum out the front.



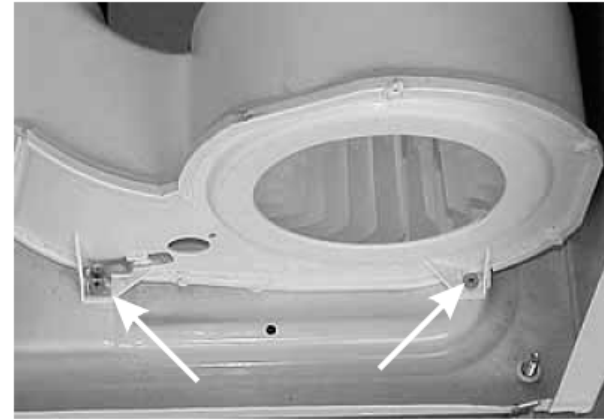
Disassembly

Removing the Blower Housing & Fan Blade

1. Disconnect the dryer from electrical supply and remove the drum.
2. Remove the control thermistor.
3. Using a 7/8" socket, turn the fan blade clockwise while holding the motor shaft to remove the blade from the motor shaft.



4. Remove (2) screws holding the housing to the dryer base.



5. Remove the front motor lock by inserting a screwdriver at the rear of the housing to release the housing from the motor.

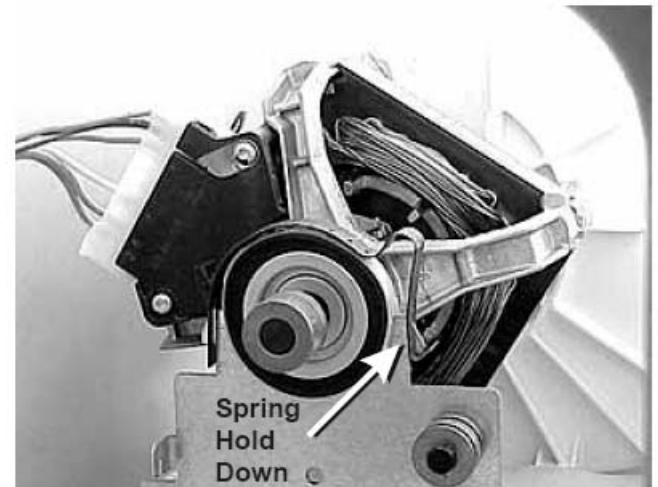


6. Raise the front of the motor and pull the housing forward.

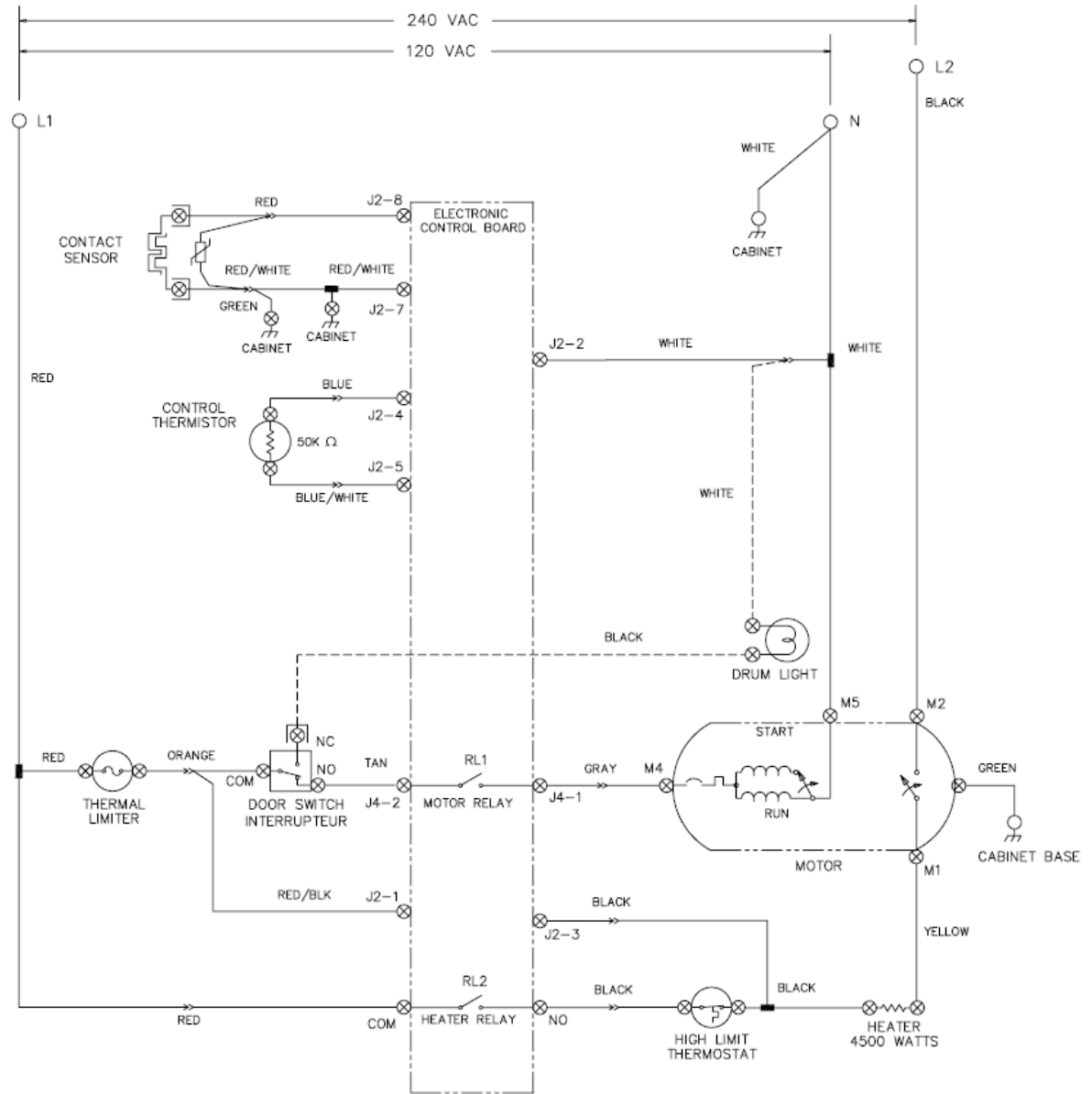
Disassembly

Removing the Drive Motor

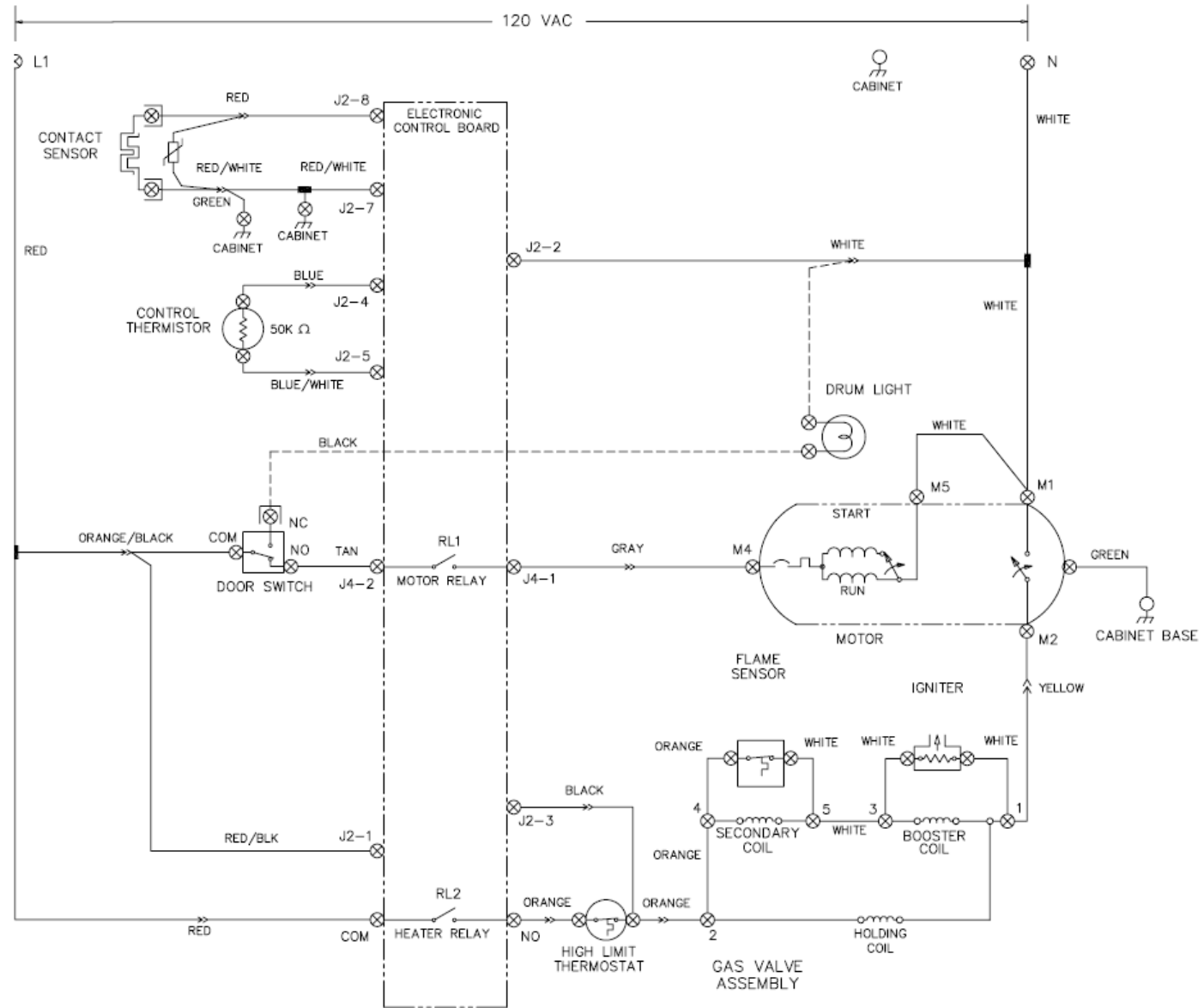
1. Disconnect the dryer from electrical supply and remove the drum.
2. Unplug the harness from the motor and remove the idler assembly.
3. Unscrew the blower wheel from motor shaft.
4. Release the front motor lock from the blower housing.
5. Release the spring hold down on the rear of the motor and lift the motor out.



Wiring Diagram Electric Models



Wiring Diagram Gas Models

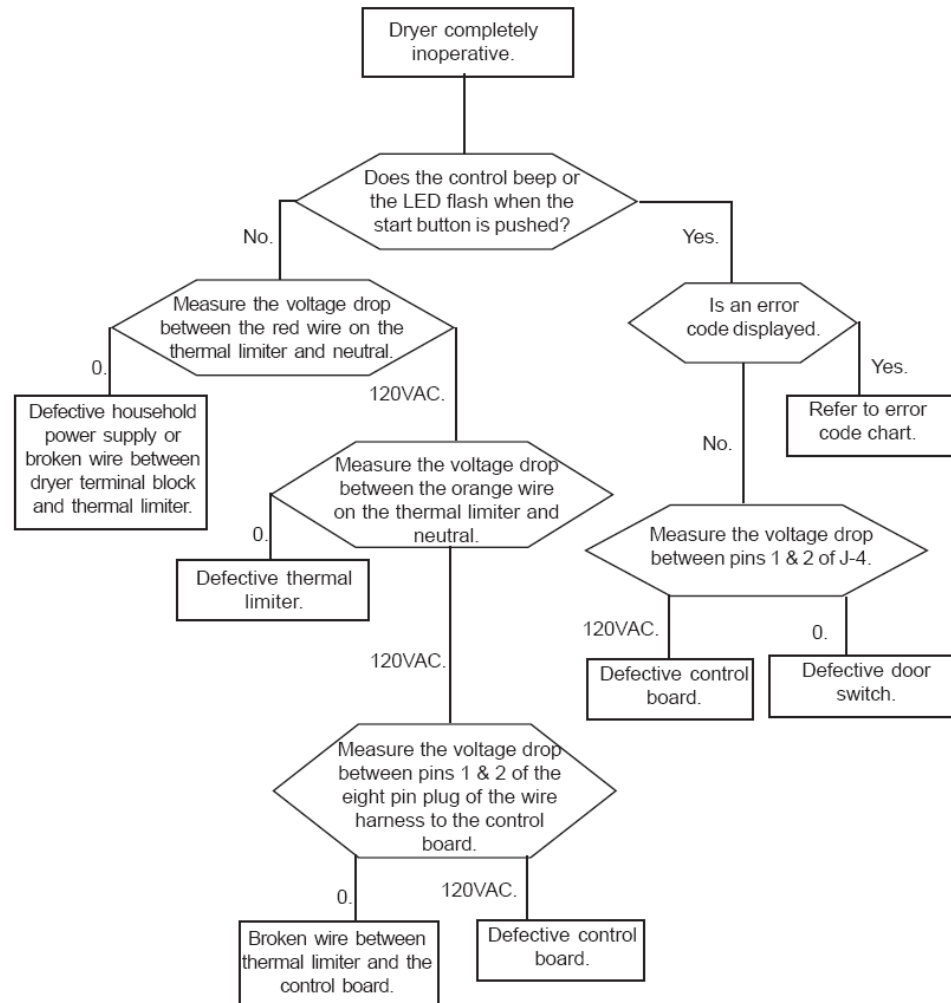


Flow Charts

Electric dryer completely inoperative.

Note: Always check wiring to the components.

Note: If a fault code is displayed, the dryer will not operate.

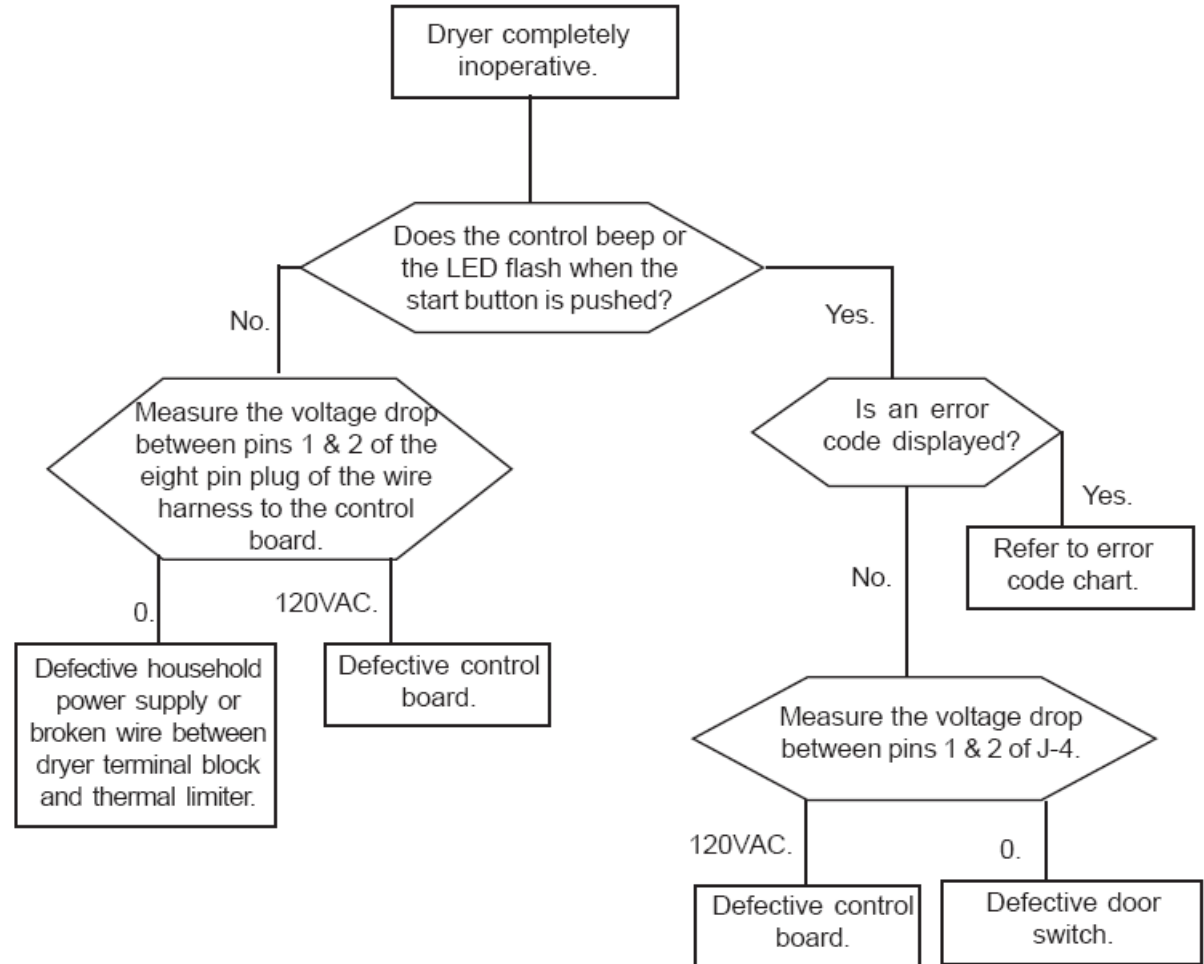


Flow Charts

Gas dryer completely inoperative.

Note: Always check wiring to the components.

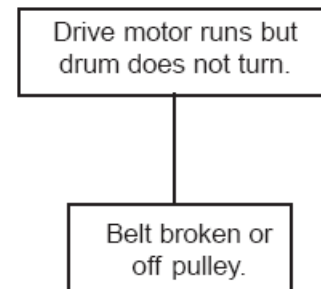
Note: If a fault code is displayed, the dryer will not operate.



Flow Charts

Electric and Gas dryers; blower motor runs but drum does not turn.

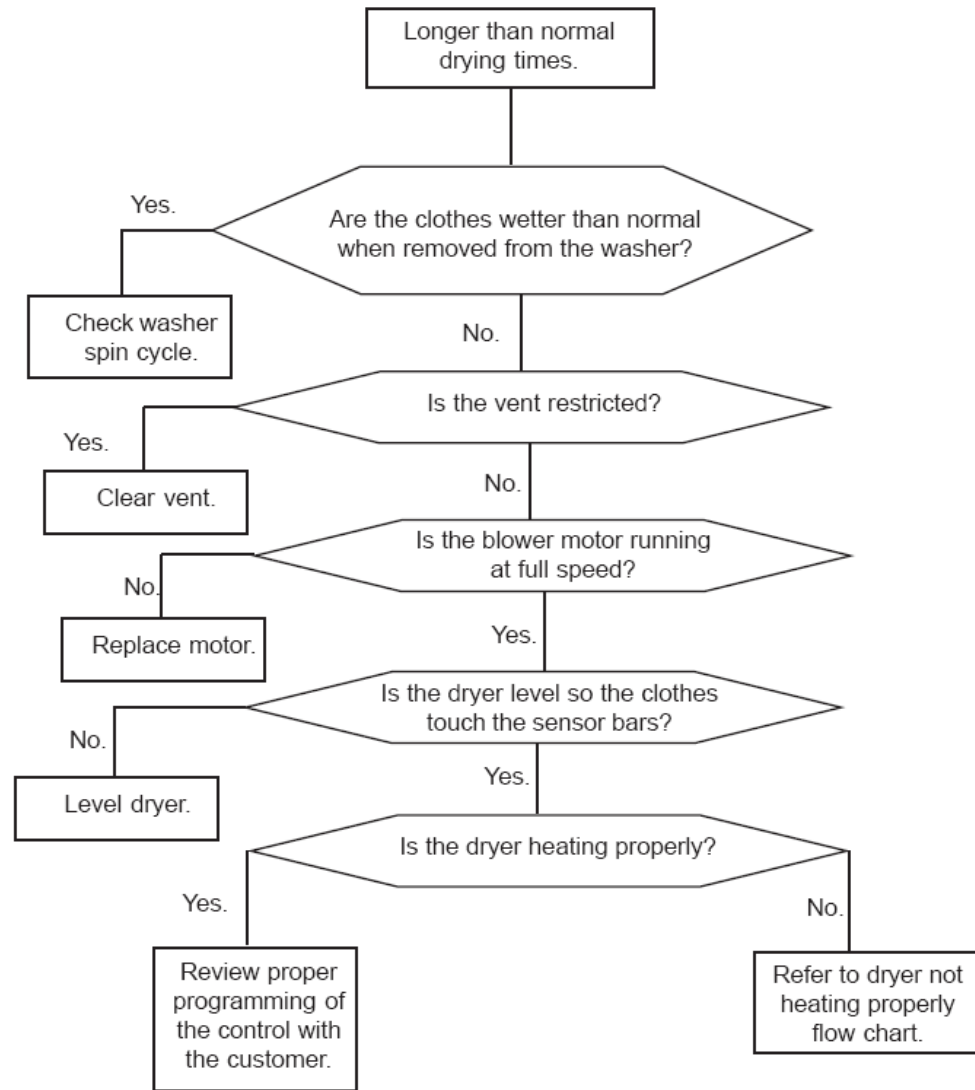
Note: Always check wiring to the components.



Electric and Gas dryers; longer than normal drying times. (Possible E 4A)

Note: Always check wiring to the components.

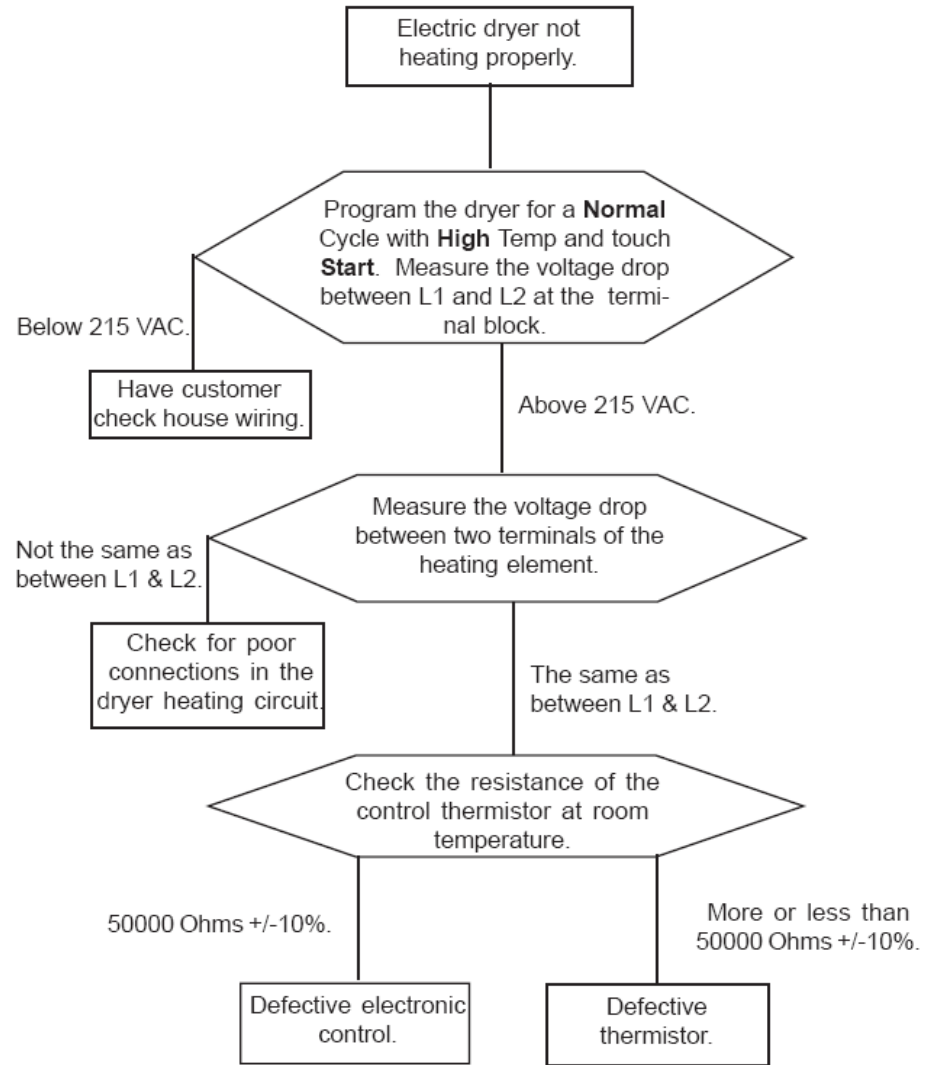
Flow Charts



Electric dryer not heating properly (Possible E 5b)

Note: Always check wiring to the components.

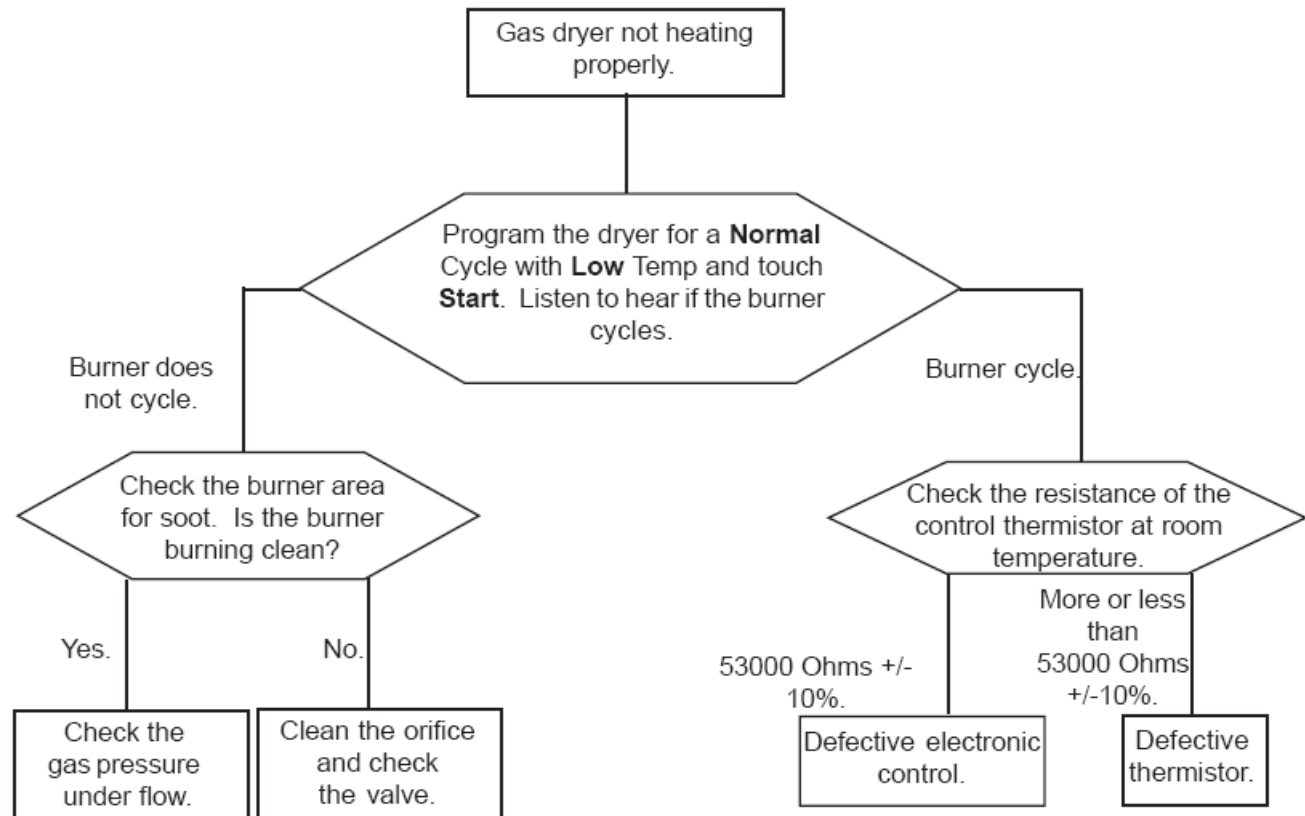
Flow Charts



Flow Charts

Gas dryer not heating properly. (Possible E 5b)

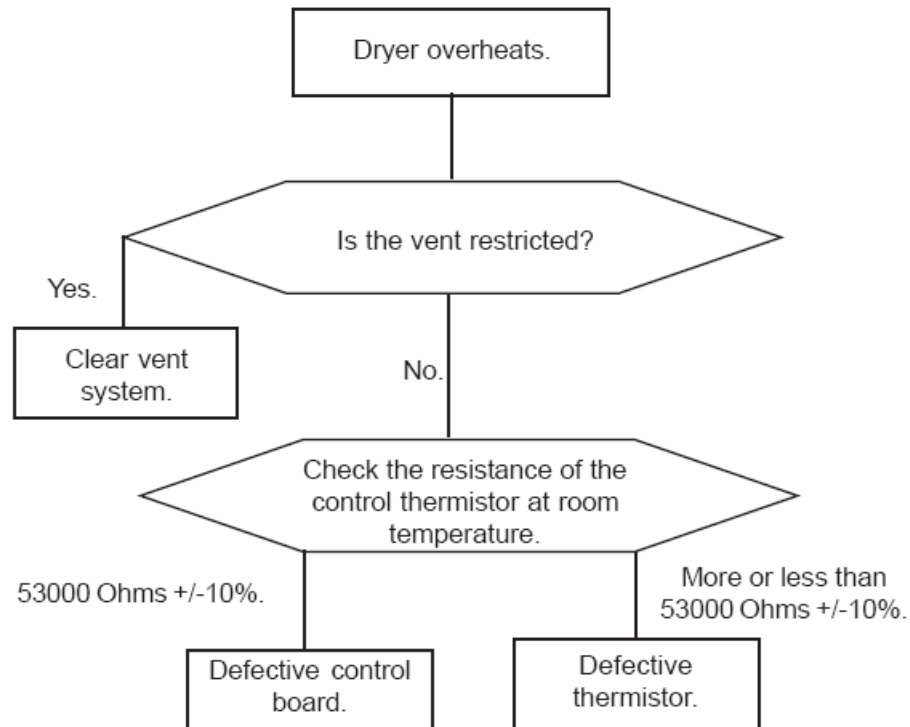
Note: Always check wiring to the components.



Flow Charts

Electric and Gas dryers; dryer overheating. (Possible E 8C)

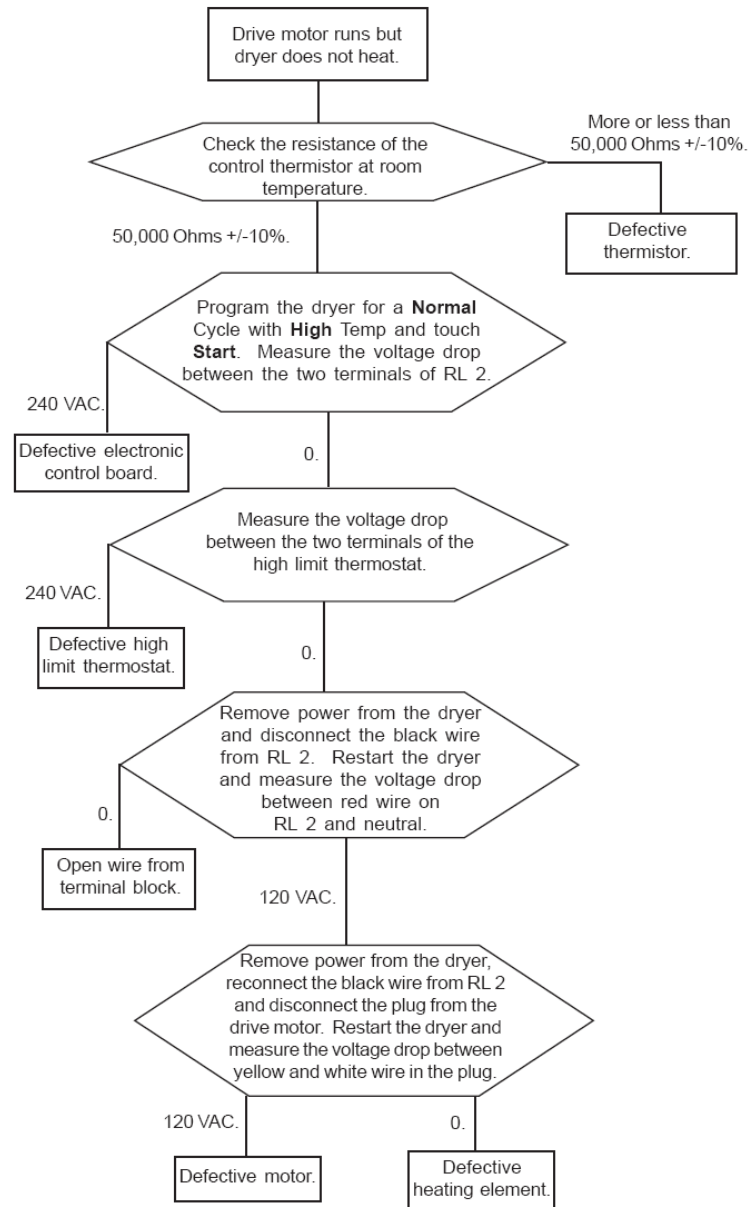
Note: Always check wiring to the components.



Flow Charts

Electric dryer; drive motor runs but dryer does not heat.

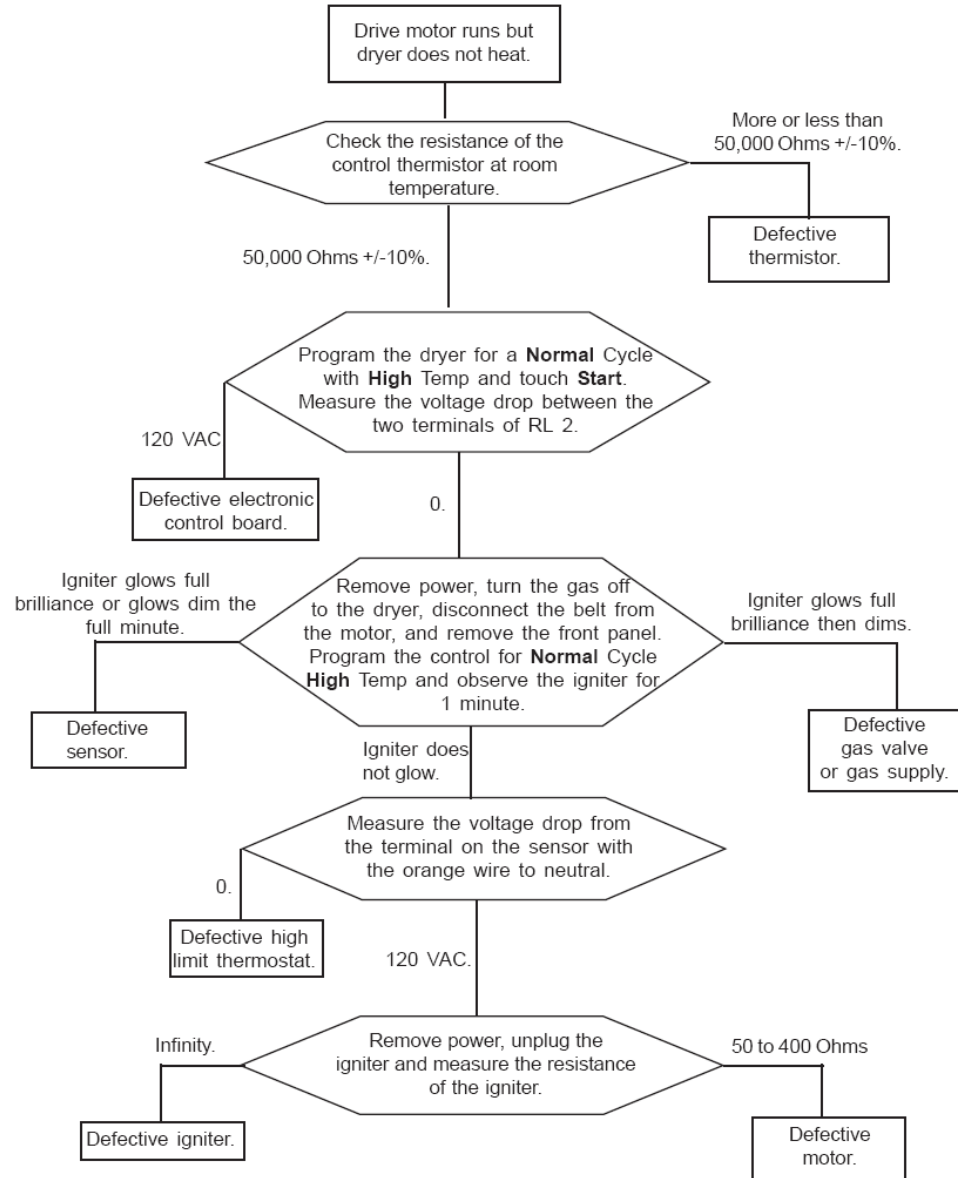
Note: Always check wiring to the components.



Flow Charts

Gas dryer; drive motor runs but dryer does not heat.

Note: Always check wiring to the components.



Flow Charts

Electric and Gas dryer; clothes not dry in auto cycle.

Note: Always check wiring to the components.

