

Datum 1997-11 Date	HÖLJE	CASING AND RELATED PARTS	Sida 2 Page
---------------------------------	--------------	---------------------------------	--------------------------

Fig.	Antal Qty	Detalj nr Part No.	Benämning	Description	Anmärkning Notes
1	1	80 583 53	Ljuddämpn.skiva	Sound absorb. slab,	
2	1	80 600 41	Ljuddämpn.profil	Sound absorbent profile	
3	1	80 575 26	Skyddsplåt	Protection plate	
	4	89 003 52	Skruv	Screw	RTS 4,2x13
4	1	80 707 43	Filt,sparkplåt	Felt,kick plate,	
5	1	80 597 58-	Sparkplåt	Kick plate	-0, -29 Add. acc.
	2	89 009 44-	Skruv	Screw, kick plate	-0, -29 MRT 4x6 Fzb T20
6	1	80 706 15	Tätninglist	Sealing strip	
7	1	80 571 00-	Nedre lucka	Lower cover	-S-0, -S-29, -95
	2	89 003 52	Skruv	Screw	RTS 4,2x13
	4	80 097 69	Plugg för dekorram	Plug for decorframe	
	4	80 097 69-	Plugg för dekorram	Plug for decorframe	-33
8	1	80 706 12	Ljudisolering	Sound absorbent	
9	1	80 584 86	Droppskydd,skyddsplåt	Drip guard,protection	
10	2	80 575 49	Fäste sparkplåt	Bracket,kick plate	
11	2	80 575 50	Fjäder,sparkplåt	Spring,kick plate	
	2	89 003 27	Skruv	Screw	4,2x13 Fzb T20

Index-tillägg

Efter artikelnumret kan finnas ett streck (-) som innebär att artikeln har index. Detta index kan då vara en siffra, som innebär en viss färg, t ex -0 som är vit.

Det kan även vara en bokstav. Dessa innebär följande:
-A för avhårdare - for softener

Om en innerbehållare
t ex ska vara för en maskin med avhårdare och innerbelysning, anges 88 010 88-AB.

Addition of index

After the part no. there can be a dash (-) which means that the part no. has an index. It can be a number, which means a colour, -0 means white etc.

It can also be a letter. They have the following meaning:

If a casing is ment for a machine with softener and interior light, you order 88 010 88-AB.

Färgindex - Colour index

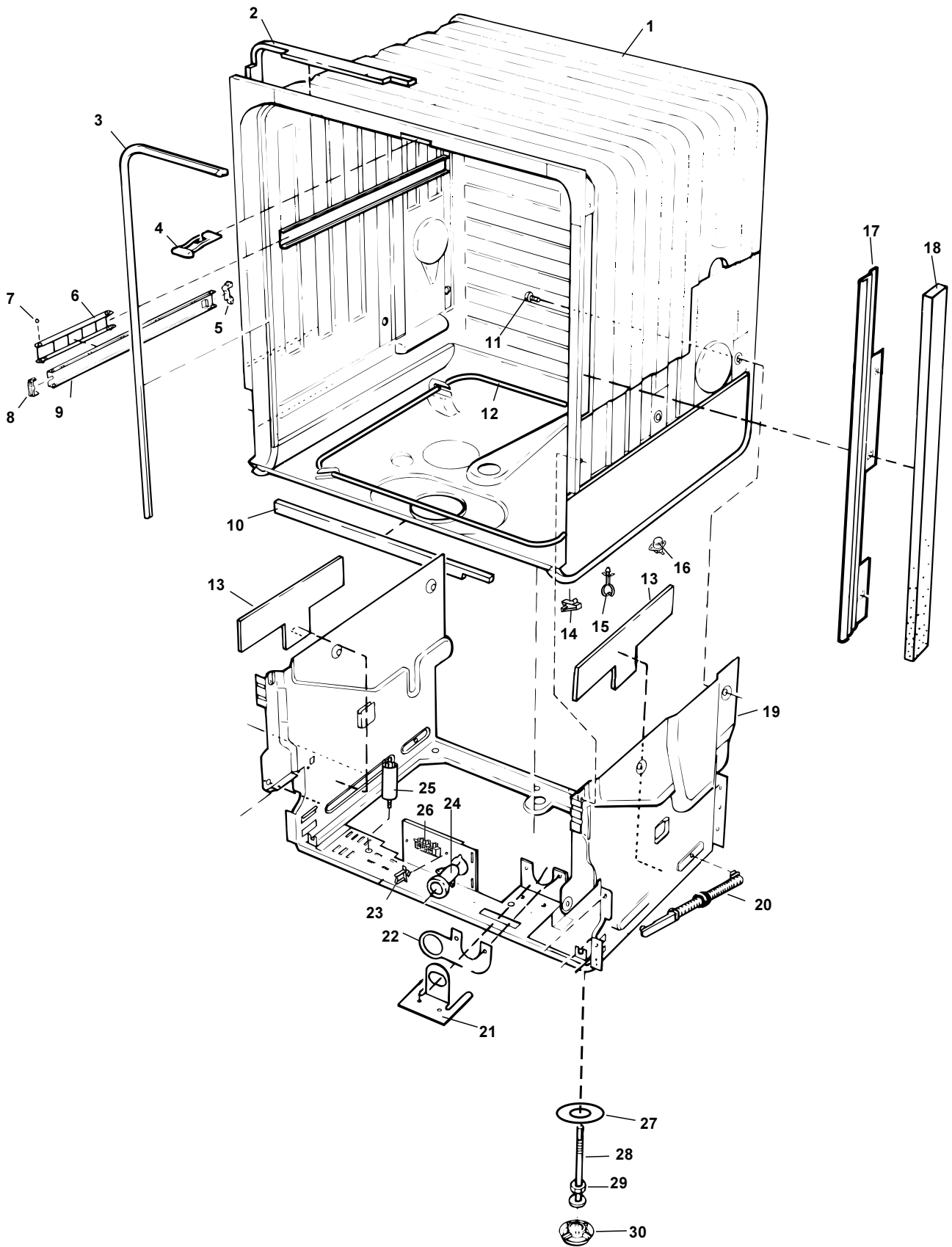
-0	vit - white
-29	svart, blank - black, bright
-33	svart - black
-36	mörkgrå - dark grey
-49	heliosgrå - helios grey
-69	svart, metallic - black, metallic
-77	grå - grey
-95	rostfri - stainless steel

Behållare - Casing

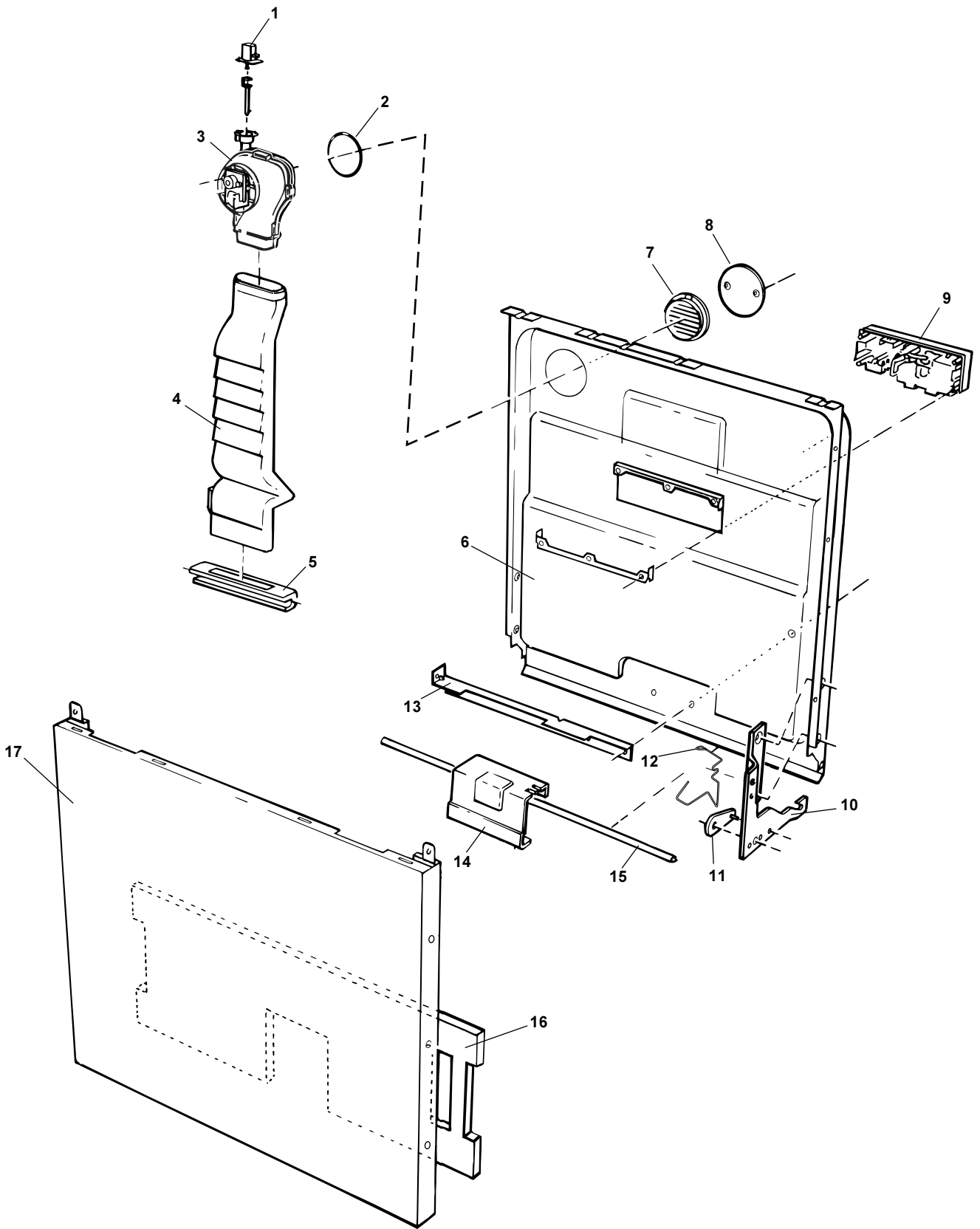
-B	för innerbelysning - for interior light
-D	för övre besticklåda - for upper cutlery basket
-G	USA-utrustad - for USA

Luckor - Doors

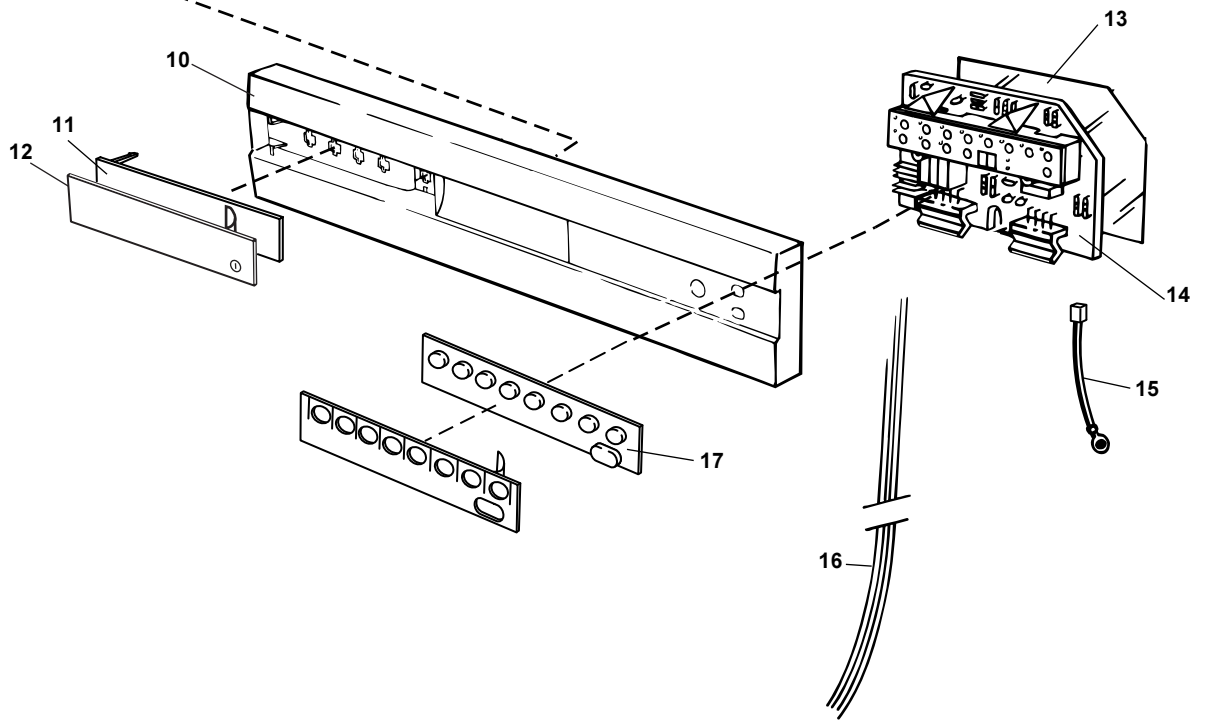
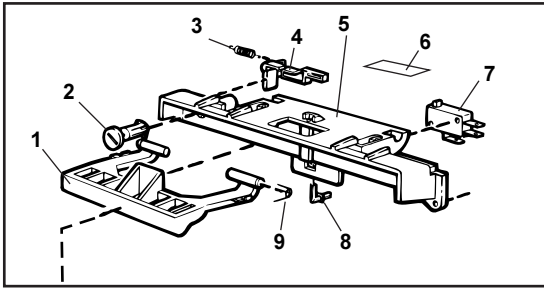
-M	för fläkt - for fan
-P	för intgrerat - for integrated
-R	för dekorram,lång delning - for decor frames,long devision
-S	för dekorram,kort delning - for decor frames,short devision
-T	för dekorram,justerbar underdel - for dec. frames adjust. lower part
-V	för gälar - for gill




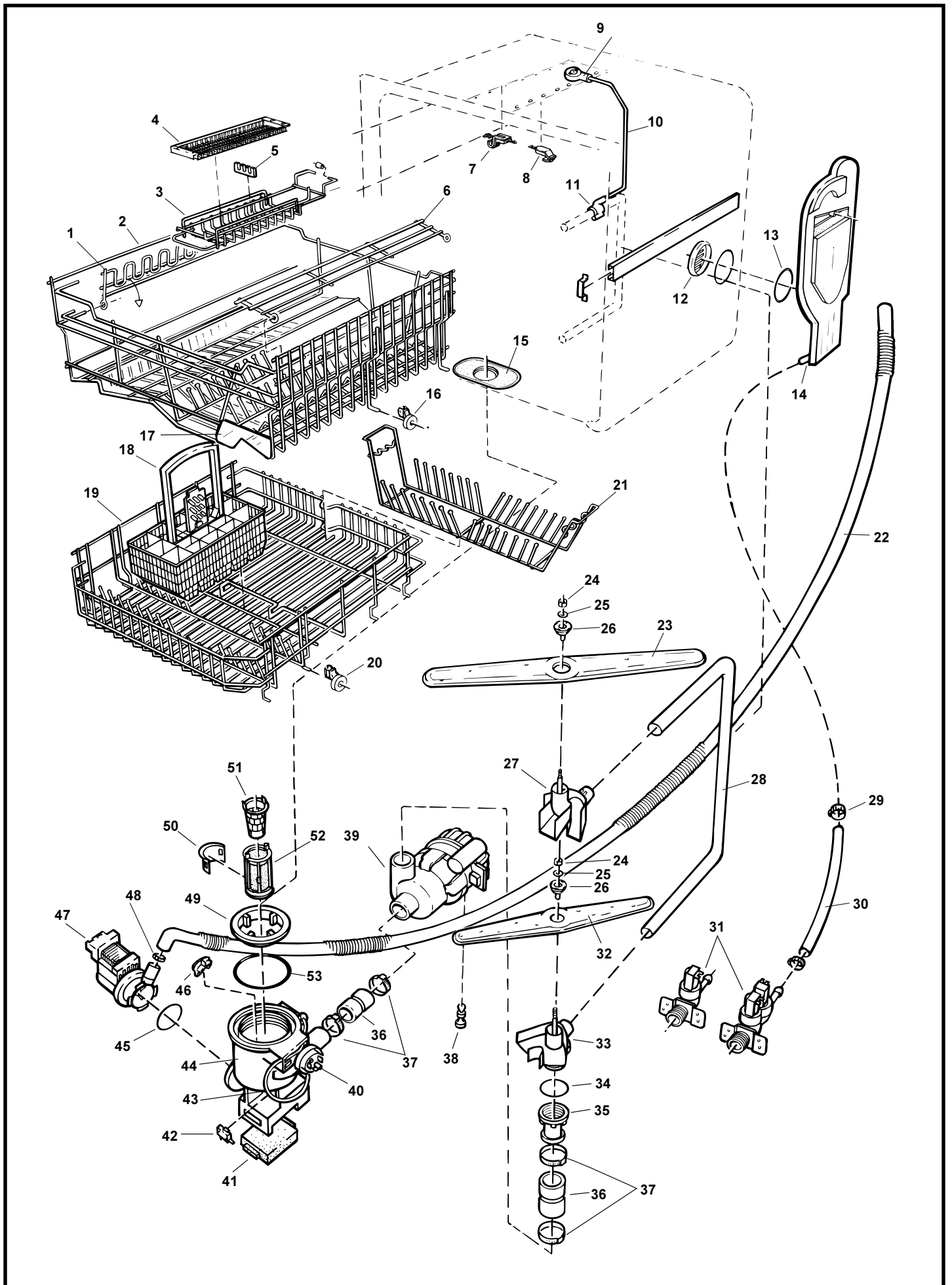
Datum 1997-11 Date		BEHÅLLARE			CONTAINER AND RELATED PARTS		Sida 4 Page
Fig.	Antal Qty	Detalj nr Part No.	Benämning	Description	Anmärkning Notes		
1	1	88 010 88-	Innerbehållare m isol.	Casing w insulation	Note model and index		
2	1	80 706 13	Tätninglist	Sealing strip, casing top			
3	1	80 574 89	Lucklist	Tub seal			
4	1	88 010 98	Låshake kompl.	Lock catch compl.			
5	2	80 579 78-	Kulspärr	Ball catch	-77		
6	2	80 586 38-	Kulhållare,åklist	Ball holder,guide rail	-77		
7	8	80 579 77	Kula	Ball			
8	2	80 579 79-	Korgstopp	Basket stop	-77		
9	2	80 570 52	Åklist	Guide rail			
10	1	80 600 33	Ljuddämpn.skiva	Sound absorb. slab,	Mod.1555		
11	4	89 011 10	Skruv + o-ring	Screw + o-ring	A2-M6x12 T30 D		
12	1	80 570 77	Värmeelement	Heating element	1400 W 120 V		
	1	80 602 58	Kabelhållare	Cable holder	For heating		
	2	80 023 70	Skyddskrage	Protection collar, heating			
13	2	80 583 52	Ljuddämpn.skiva	Sound absorbent	Mod. 1555		
14	1	80 584 95	Kabelhållare	Cable holder, door			
15	1	80 701 42	Kabelhållare	Cable holder			
16	1	80 025 79	Termostat	Thermostat	88 break.aut.		
17	1	80 597 61-	List sida	Strip side	-0, -29, -95 Left		
	1	80 597 62-	List sida	Strip side	-0, -29, -95 Right		
	4	89 006 46	Skruv	Screw	A4 RTS 4,2x13 T20		
	2	89 003 52	Skruv	Screw	RTS 4,2x13 T20		
18	2	80 706 14	Tätninglist	Sealing strip			
19	1	80 575 23	Botten yttre	Bottom outer			
	2	89 011 04	Skruv, behållare - botten	Screw, casing - bottom	A2 MRT-TT 4x8 FZB T20		
20	2	80 584 91-	Luckfjäder	Door spring compl.	-77		
21	1	80 704 95	Fäste för inloppsventil	Mount inlet valve			
	2	89 003 27	Skruv	Screw	4,2 x 13 FZB T20		
22	1	80 602 55	Fäste elansl.	Mount el.connection			
23	2	80 599 91	Kabelhållare	Cable holder			
24	1	80 069 48	Genomföring	Grommet			
25	1	80 585 58	Radioavstörn.skydd	RFI filter	F18		
26	1	80 502 51	Inkopplingsplint	Terminal box	KL24/3SL,3-pole		
	1	89 003 57	Skruv	Screw, terminal block	RTS 4,2x25 FZB T20		
	1	89 021 31	Skruv	Screw, grounding terminalblock	MRT-TT 4x6 FZB T20		
	1	89 014 13	Bricka	Washer	AZ 4,3 FZB		
27	1	80 721 19	Förstärknings bricka	Reinforcement washer			
28	4	80 570 62	Fot	Foot	M10x100, 8,8 Fzb		
29	4	89 011 56	Mutter	Nut	M6M10 BH8 Fzb		
30	2	80 519 57	Glidfot	Slide foot, rear only			



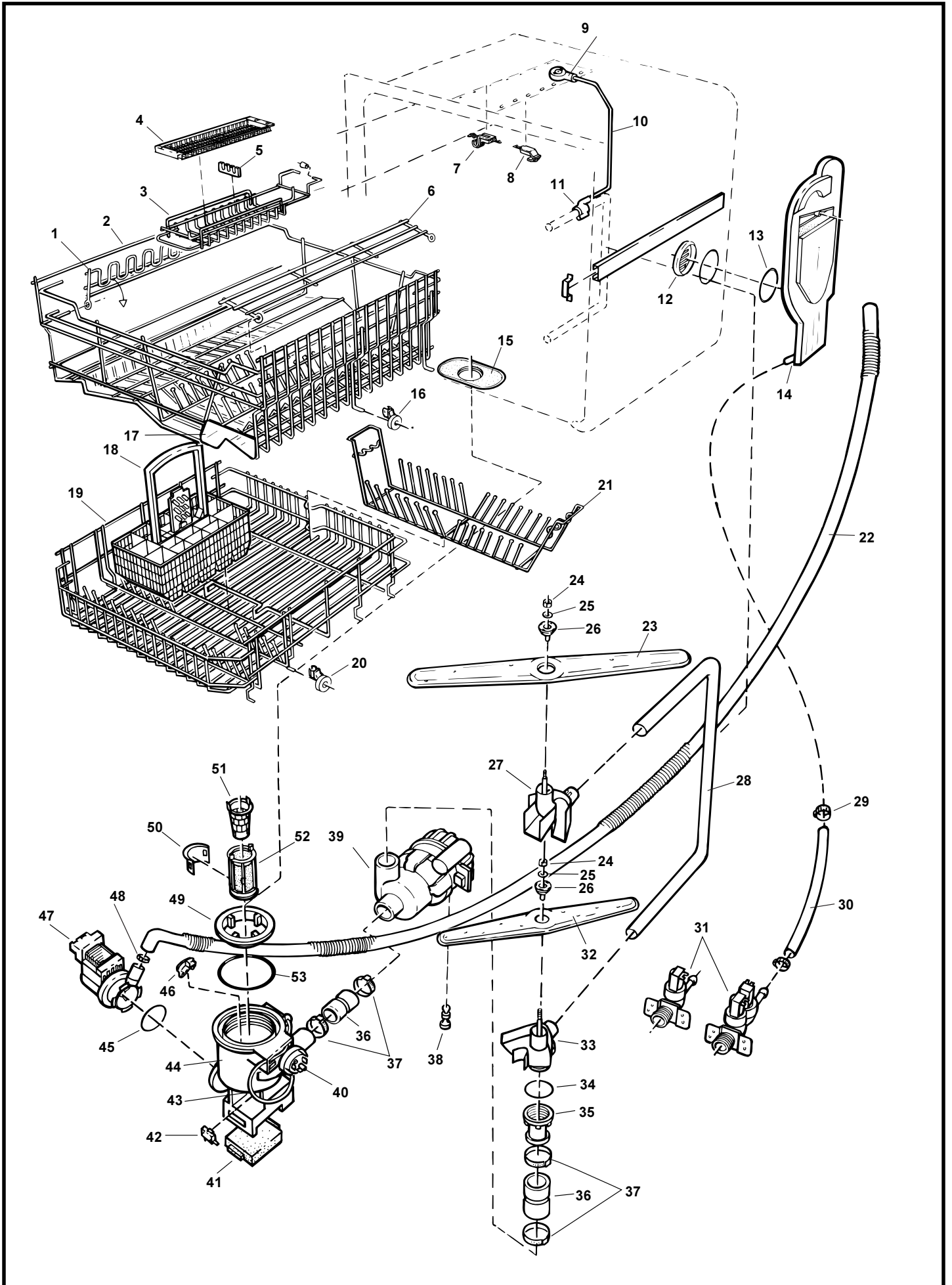
Datum 1997-11 Date		LUCKA			DOOR		Sida 6 Page
Fig.	Antal Qty	Detalj nr Part No.	Benämning	Description	Anmärkning Notes		
1	1	80 548 98	Vaxmotor	Vax motor			
2	1	80 585 01	O-ring	O-ring			
3	1	80 600 21	Fläkt,komplett	Ventilator,compl.			
4	1	80 579 63-	Luftkanal	Air channel, turbo dry	-S		
5	1	80 710 78-	Munstycke,luftkanal	Nozzle,air channel	-0, -33		
6	1	88 011 18	Innerlucka kompl.	Inner door compl.	With fan		
	4	89 021 20	Skruv	Screw	A2-MKFT 5x10-TT FZ		
7	1	80 579 64	Låsring,fläkthus	Lock ring,fan casing			
8	1	80 584 84	Täckbricka fläkt	Cover plate,fan			
	2	89 020 85	Skruv	Screw, fan cover plate	A2-PTK 40x10 WN1452 TT		
9	1	88 011 40-	Kombidoserare	Combi dispenser	-77, 120V		
	6	89 020 87	Skruv	Screw	PTK 40x14 WN1452 FZB		
	1	80 719 16	Tätning diskm.lucka	Seal, det.comp.lid			
	1	80 719 17	Lock vätm.	Lid, rinseaid.			
	1	80 719 18	Lucka inkl. tätn. och fjäder	Lid incl. seal and spring			
10	1	80 575 25	Gångjärn	Hinge	Left		
	1	80 575 24	Gångjärn	Hinge	Right		
	2	80 575 30	Gångjärnsskruv	Hinge screw			
	2	33500262	Mutter	Nut, hinge bearing	Loc-king 4BH8 FZB		
11	2	80 579 48	Glidbricka gångjärnsl.	Slide washer,hinge bearing			
12	1	80 715 87	Hållare,kabelhärva	Holder,cable harness			
	1	89 021 31	Skruv	Screw, cable harness holder	MRT-TT 4x6 FZB T20		
13	1	80 584 87	Mellanstag luftkanal	Stay,air channel	Before week 35 -96		
14	1	80 579 85	Mellanstag	Brace stand			
	2	89 006 46	Skruv	Screw, lower stay	A4 RTS ST 4,2x13 T20		
15	1	80 602 54	Lucktätning nedre	Door seal lower	L=555 mm		
16	1	80 702 94	Ljuddämpn	Sound absorb			
17	1	80 579 86-	Lucka ytterdel	Door outer part	-S-0, -S-29, -95		
	6	89 006 46	Skruv	Screw	A4 RTS 4,2x13 T20		
	2	89 003 27	Skruv	Screw	RTS 4,2x13 FZB T20		
	2	80 561 17-	Skruv	Screw	-29 RTS 4,2x9,5 S		
	6	80 097 69	Plugg för dekorram	Plug for decorframe			
	6	80 097 69-	Plugg för dekorram	Plug for decorframe	-33		



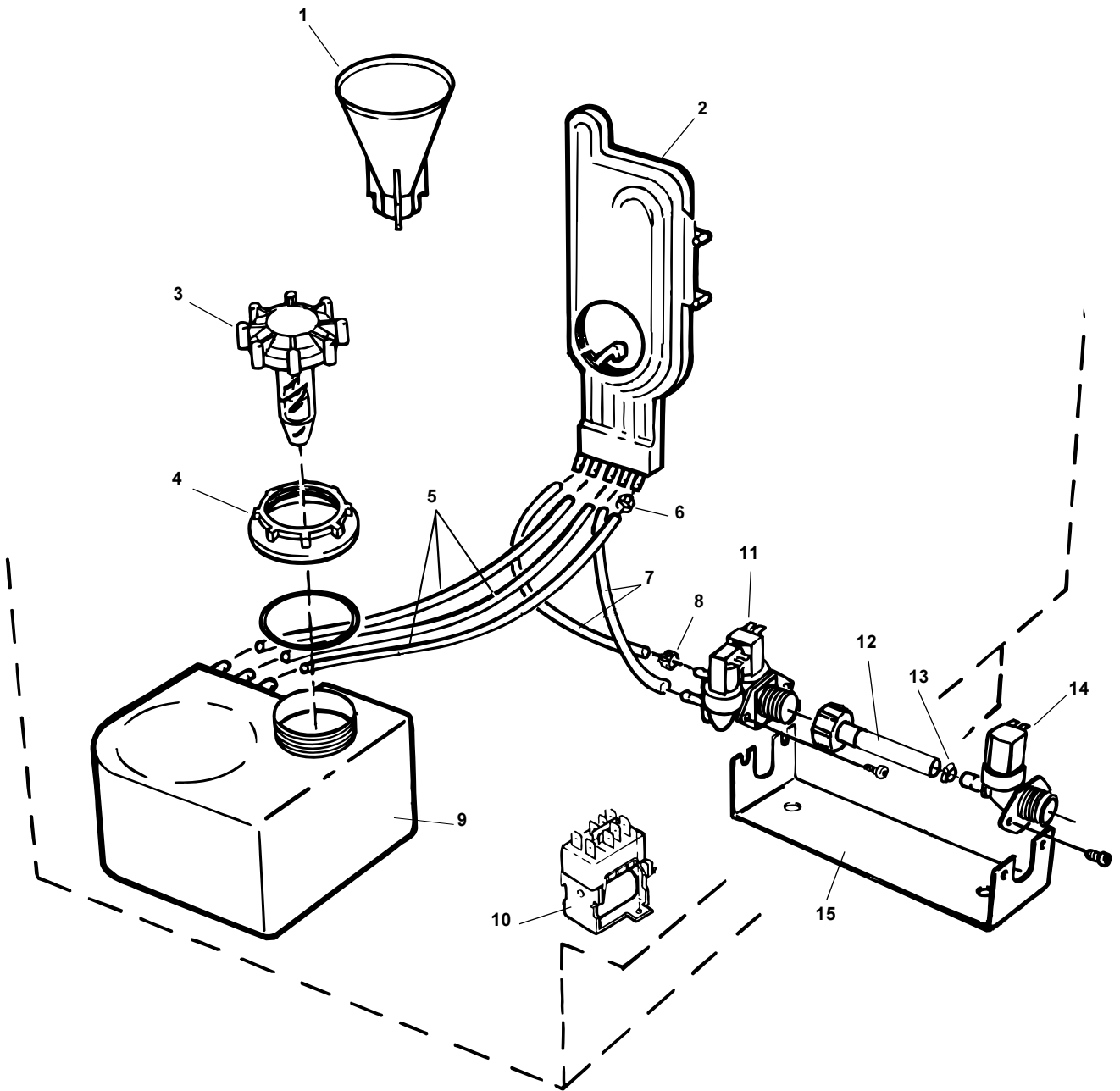
Datum 1997-11 Date		PANEL			PANEL		Sida 8 Page
Fig.	Antal Qty	Detalj nr Part No.	Benämning	Description	Armarkning Notes		
1	1	80 575 41-	Handtag	Handle	-0, -33		
2	1	80 575 45	Vridspärr	Rotary catch			
3	1	80 575 46	Fjäder,bamsäkerth.spärr	Spring, safety catch			
4	1	80 575 44	Manöverarm,bams.sp.	Control arm,safety catch			
5	1	80 575 39	Skydd,låsfunktion	Guardlock			
	2	89 020 87	Skruv	Screw	PTK 40x14 WN1452 FZB		
6	1	80 710 98	Skydd,microbrytare	Guard, microswitch			
7	1	80 554 73	Microbrytare,lucklås	Microswitch			
8	1	80 575 42	Manövertapp	Control pin			
9	1	80 070 78	Fjäder,låshandtag	Spring, lock handle			
10	1	80 575 37-	Frontpanel	Front panel	-0, -69		
	2	89 020 85	Skruv	Screw	A2-PTK 40X10WN1454 T20		
11	1	80 575 38-	Lucka,H-brytare	Lid, main switch	-0, -69		
	1	89 020 92	Skruv,lucka huvudbrytare	Screw, lid main switch			
12	1	80 708 98-	Dekorinlägg	Décor insert	-0, -33, -95 Mod. 1585		
	1	80 705 03-	Dekorinlägg	Décor insert	-0, -33, -95 Mod. 1555		
	1	80 72 468-	Dekorinlägg	Décor insert	-0, -33, -95 Mod. 1595		
13	1	80 600 76	Beröringsskydd	Contact cover			
14	1	80 579 31-4	Styrenhet	Control unit			
	2	89 020 53	Skruv	Screw	PTK40x45/15 FZB T20		
15	1	80 597 67	Termistor	Thermistor	850 mm		
16	1	80 714 59	Kabelhärva komplett	Cable harness complete	Mod. 1585		
	1	80 700 54	Kabelhärva komplett	Cable harness complete	Mod. 1555		
	1	80 704 82	Kabelhärva komplett	Cable harness complete	Mod. 1555 with softener		
17	1	80 705 09-	Tryckknappar	Pushbutton	-0, -33 Mod. 1585		
	1	80 725 12	Tryckknappar	Pushbutton	-0, -33 Mod. 1595		
	1	80 714 37	Bruksanv.	User manual	Mod. 1585		
	1	80 711 79	Bruksanv.	User manual	Mod. 1555		



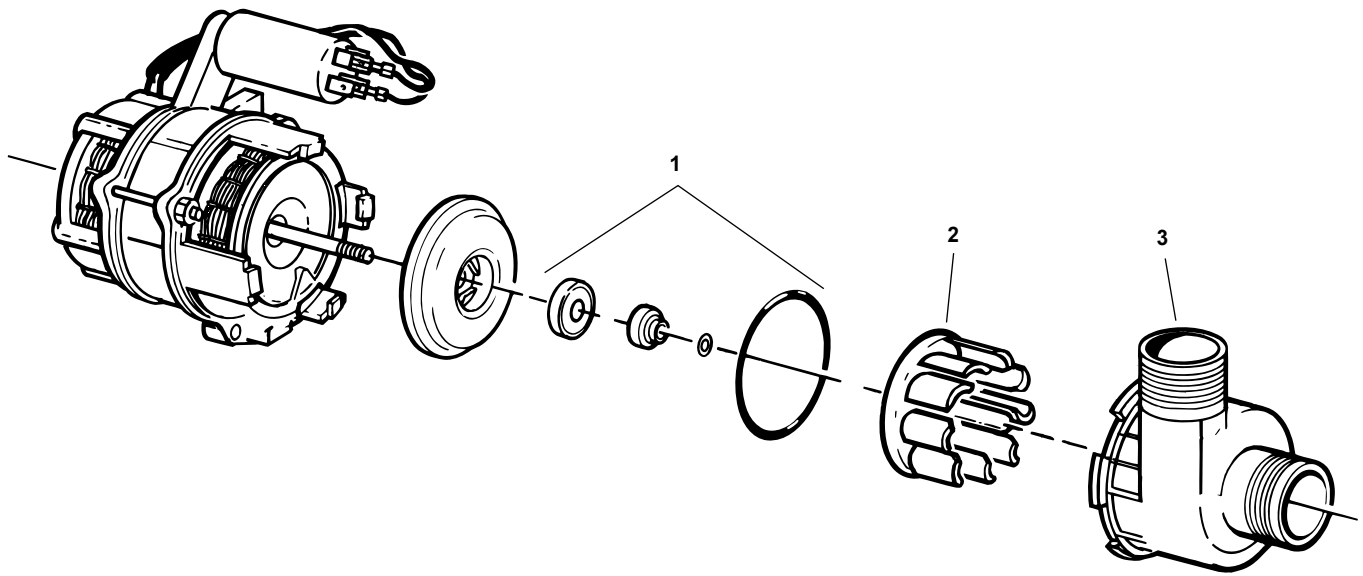
Datum 1997-11 Date		DISKSYSTEM			DISHWASHING SYSTEM		Sida 10 Page
Fig.	Antal Qty	Detalj nr Part No.	Benämning	Description	Anmärkning Notes		
1	1	80 713 37-	Kopphylla,vinglas	Cup shelf,wine glasses	-36		
2	1	80 570 98-	Överkorg	Upper basket	-36		
	2	8071214-	Knivställ överkorg	Knife stand upper basket	-77		
3	1	80 570 58-	Korg knivlåda	Basket knife box, upper	-36		
4	1	80 533 76-	Bestickkorg övre	Cutlery basket upper	-36		
5	1	80 575 05-	Knivställ	Knife stand, upper cutlery ba.	-77		
6	1	80 713 36-	Kopphylla	Cup shelf	-36		
7	1	80 575 02	Glidfäste 1	Glide mount 1			
8	1	80 584 53	Glidfäste 2	Glide mount 2			
9	1	80 575 03-	Spolrörsgenomföring	Spray pipe grommet	-77 upper		
10	1	80 575 00	Spolrör övre	Spray pipe upper			
11	1	80 575 04-	Spolrörsgenomföring	Spray pipe grommet	-77 lower		
12	1	80 575 36-	Låsring luftavbrott	Lock ring,airbreak	-77		
13	1	80 585 04	O-ring	O-ring, inlet air break			
14	1	80 575 14	Luftavbrott	Air break	Not for softener		
15	1	80 597 40	Sil överdel	Strainer,upper part			
16	4	80 584 98-	Korghjul	Basket wheel	-77, upper		
17	1	80 575 06-	Knivstopp	Knife stop, upper basket	-77		
18	1	88 010 89-	Bestickkorg m handtag	Cutlery basket with handle	-77		
19	1	80 584 90-	Underkorg	Lower basket	-36		
20	8	80 095 16-	Korghjul	Basket wheel	-77 lower		
21	1	80 584 93-	Insats underkorg	Insert lower basket	-36		
22	1	80 703 04	Avloppsslang	Outlet hose			
23	1	80 712 51	Spolarm övre	Spray arm upper			
24	2	89 012 62	Mutter	Nut, spray arm bearing			
25	2	80 520 95	Lagerbricka	Washer, spray arm bearing			
26	2	80 570 70-	Spolarmslagring	Spray arm bearing	-77		
27	1	80 570 68-	Spolrörslagring övre	Spray pipe bearing upper	-77		
28	1	80 570 63	Spolrör	Spray pipe, inner			
	1	80 570 63-D	Spolrör	Spraypipe, inner	Mod. 1555		
29	2	80 521 89	Slangklämma	Hose clip, inlet valve	17.0-706		
30	1	80 585 02	Gummislang	Rubber hose, inlet valve			
31	1	80 575 08	Inloppsventil	Inlet valve	Single Mod.1585 not for soft.		
	1	80 575 10	Inloppsventil	Inlet valve	Double Mod.1555 not for soft.		
	2	89 020 87	Skruv	Screw	PTK 40x14WN1452 FZB		
32	1	80 712 52	Spolarm nedre	Spray arm lower			
33	1	80 570 67-	Spolrörslagring nedre	Spray pipe bearing lower	-77		
34	1	89 017 55	O-ring	O-ring, lower spray pipe bearing			
35	1	80 570 69	Muff spolrörslagring	Nut, spray pipe bearing			
36	2	80 574 84	Slang cirk.pump	Hose circ.pump			
37	4	80 602 66	Slangklämma	Hose clip, circ pump hose	44.0-706R		
38	1	80 550 95	Gummidämpare	Rubber buffer, circ pump			



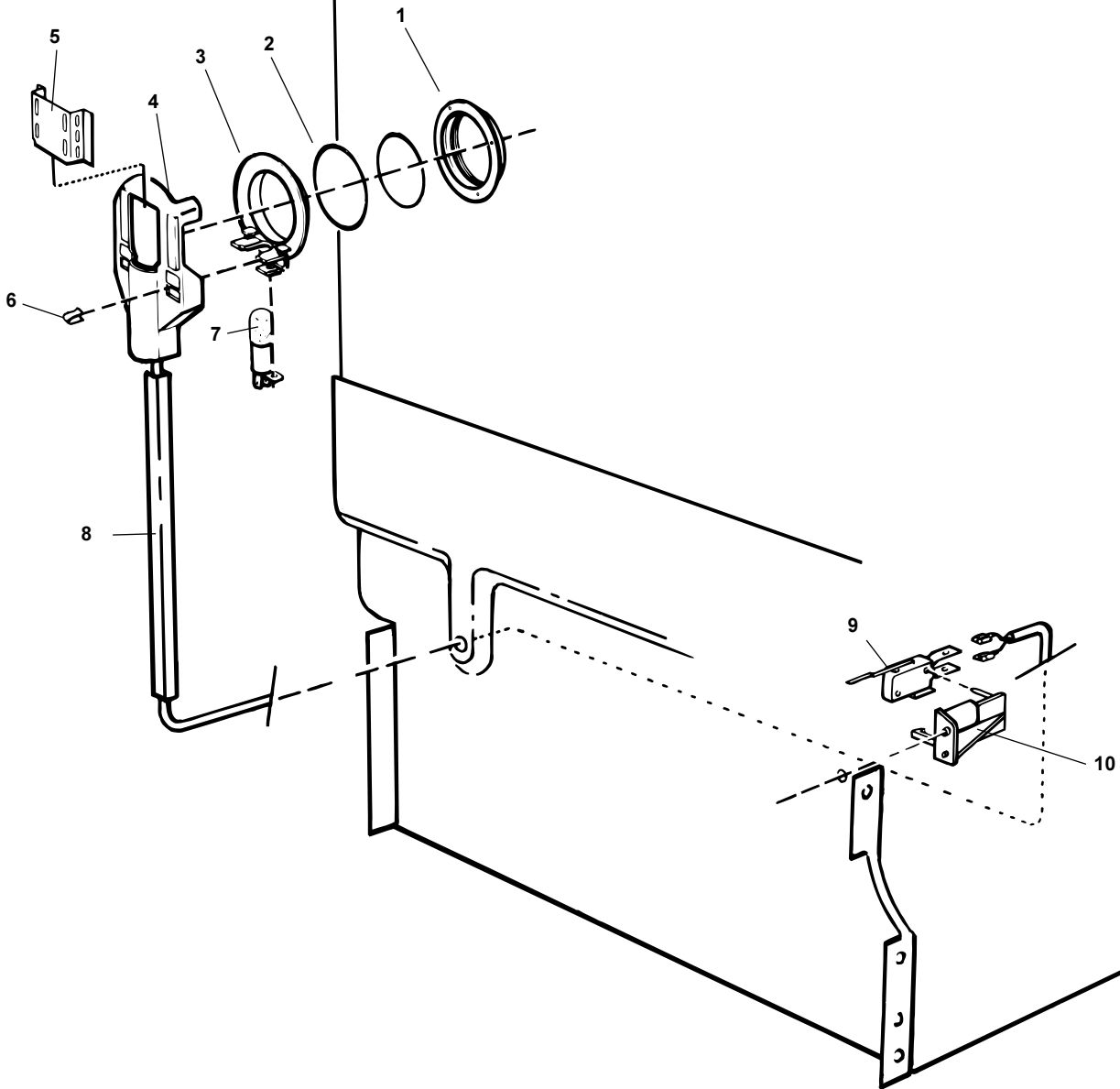
Datum 1997-11 Date		DISKSYSTEM			DISHWASHING SYSTEM		Sida 12 Page
Fig.	Antal Qty	Detalj nr Part No.	Benämning	Description	Anmärkning Notes		
39	1	80 712 50	Cirkulationspump	Circulationpump			
40	1	80 710 24	Nivåbrytare	Level switch	After week 12-96		
	1	80 584 75	Nivåbrytare	Level switch	Before week 12-96		
41	1	80 570 53	Flottör	Float, bottom well			
42	1	80 600 68	Microbrytare översvämn.	Micro switch,			
43	1	80 585 00	Gummislang	Rubber hose,	5x8x370		
44	1	88 011 23	Bottenbrunn	Bottom well			
45	1	80 025 84	O-ring	O-ring, outlet pump	49,5x3		
46	1	80 574 87-	Täckbricka bottenbrunn	Cover plate	-33		
47	1	80 570 83	Avloppspump	Outlet pump			
48	1	73 826 09	Slangklämma	Hose clip	R19, Eaton		
49	1	80 574 88	Låsring bottenbrunn	Lock ring, bottom well			
50	1	80 584 54	Täckskiva insug	Cover plate			
51	1	80 579 72-	Grovsil	Strainer basket, coarse	-77		
52	1	80 574 86-	Insats grovsil	Insert, strainer basket	-77		
53	1	80 585 03	O-ring	O-ring, bottom well	109,5x3		



Datum 1997-11 Date		AVHÄRDAR SYSTEM, 1556			SOFTENER SYSTEM, 1556		Sida 14 Page
Fig.	Antal Qty	Detalj nr Part No.	Benämning	Description	Anmärkning Notes		
1	1	80 584 94	Tratt	Salt funnel			
2	1	80 575 15	Luftavbrott,avhårdare	Air break,softener			
3	1	80 579 51-	Lock	Lock		-99	
4	1	80 579 50-	Låsring,avhårdare	Lock ring,softener		-77	
5	3	80 585 02	Gummislang	Rubber hose		10x15x350	
6	6	80 521 89	Slangklämma	Hose clip		17,0-706	
7	2	80 706 22	Gummislang	Rubber hose		10x15x260	
8	4	80 521 89	Slangklämma	Hose clip		17,0-706	
9	1	80 570 55	Avhårdare,optiskt öga	Softener,optical eye		m o-ring - w. o-ring	
	1	80 708 30	Stödkloss avh.	Support softener			
	1	80 603 41	O-ring avhårdare	O-ring softener			
10	1	80 704 83	Relä	Relay			
	2	89 003 46	Skruv	Screw		RTS ST 3,5x13 FZB T10	
11	1	80 700 02	Inloppsventil	Inlet valve		For softener	
	2	89 009 44	Skruv	Screw		4x6 FZB T20	
12	1	80 701 39	Ansl.slang inl.ventil	Hose set inl.valve soft seq.			
13	1	80 533 47	Slangklämma	Hose clip		18,5-708	
14	1	80 575 08	Inloppsventil	Inlet valve			
	2	89 020 87	Skruv	Screw		PTK 40x14WN1452 FZB T20	
15	1	80 704 77	Fäste	Hold			



Datum 1997-11 Date		CIRKULATIONS PUMP			CIRCULATION PUMP		Sida 16 Page
Fig.	Antal Qty	Detalj nr Part No.	Benämning	Description	Anmärkning Notes		
1	1	88 010 87	Tätningssats	Seal set, circ. pump			
2	1	80 586 35	Pumphjul	Pump impeller, circulation			
3	1	80 584 52	Pumphus	Pump housing, circulation			



Datum 1997-11 Date		INNERBELYSNING, 1555			INTERIOR LIGHT, 1555		Sida 18 Page
Fig.	Antal Qty	Detalj nr Part No.	Benämning	Description	Anmärkning Notes		
1	1	80 530 86	Låsring,lampglas	Lock ring,glass	UL		
2	1	89 017 63	O-ring	O-ring			
3	1	80 530 87	Lampglas	Glass,lamp	UL		
4	1	80 549 15	Skydd lampa	Protection,lamp			
5	1	80 549 16	Reflektor	Reflector			
6	2	89 015 92	Clips	Clip			
7	1	80 551 48	Glödlampa	Lamp			
	1	89 012 42	Mutter	Nut	M4		
	1	89 014 13	Låsbricka	Washer	AZ4,3 FZB		
	1	89 010 97	Skruv	Screw	MRT-TT 4x10 FZB T20		
8	1	80 599 68	Kabelränna	Cable channel			
9	1	80 584 69	Mikrobrytare	Micro switch			
10	1	80 549 07	Fäste för brytare	Bracket,lamp switch			
	1	89 020 87	Skruv	Screws	PTK 40x14WN1452 FZB		

Product: DW95	Colour, common for interior plastic	Group: 20	
Date: 98-03-12		Number: 83	
Reference: N-Å Carlsson		ÄO: 4357	Side: 1(1)

New common colour-77 (grey) has been introduced for interior plastic parts except for upper basket, 8053376-, which is available in two colours, -36 (dark grey) and -49 (light grey)

Parts of colour -36 and -49 will be replaced with -77 when present stock is sold out.

Product: DW 95	New door strip	Group: 20
Date: 96-08-30		Number: 76
Reference: N-Å Carlsson		ÄO: 3999

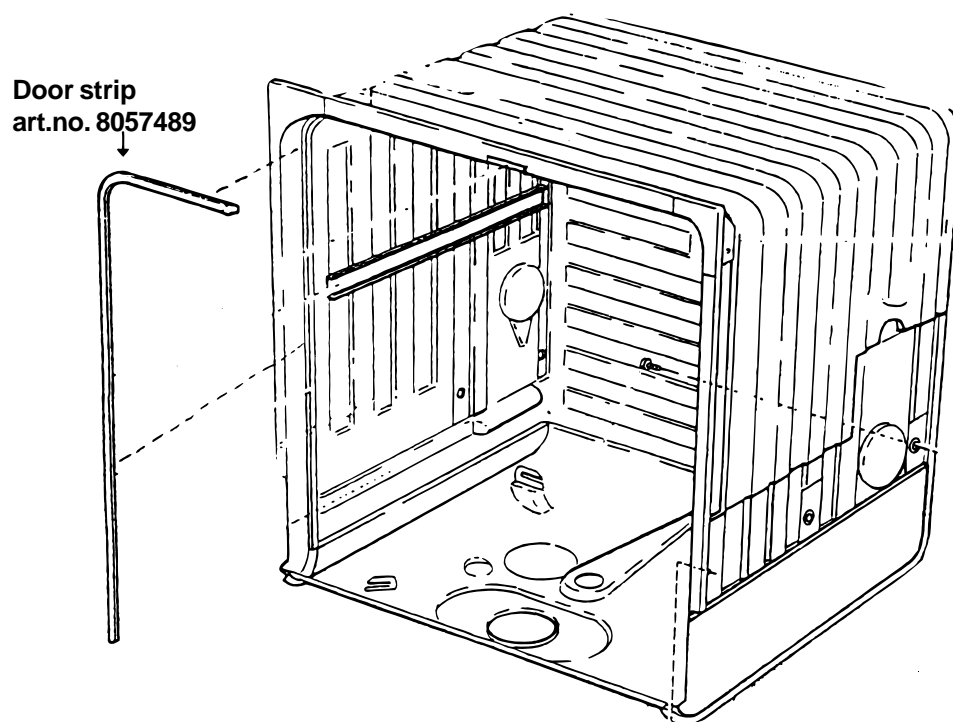
A new modified door strip which results in decreased door closing force, has been introduced in production from week 06 1996.

The new modified door strip has the same art.no. , 8057489, as the previous type and can be mounted on all previous manufactured DW 95.

Note!

By exchange of door strip, it can be necessary to adjust the lock latch due to the decreased height of the new door strip.

How to adjust the lock latch, see service bulletin group 20 no 64.

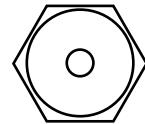


Product: DW95	Fastening of the lock catch	Group: 20	
Date: 95-06		Number: 64	
Reference: Göte Härefors		ÄO:	Side: 1(1)

Fastening of the lock catch on DW 95

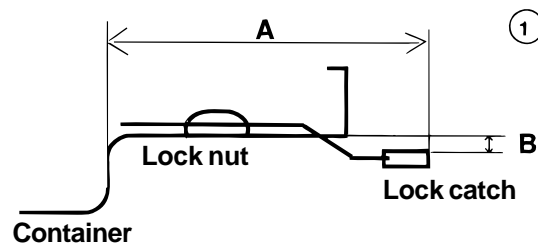
It has happened that the screwed lock catch has moved and thereby caused leakage at the upper part of the door.

To solve this problem a lock nut has been introduced, part no 80 707 67.



At service, remove the locking nut and the original locking catch. Replace these two with the new locking nut and the original M4 screw.

The lock catch will be placed as shown in picture 1:



A= 68,0 mm on machines produced W 94-38-95-06

A= 66,5 mm on machines produced from W 95-07

From W 95-10 the lock catch is welded to the container.

Change of the welded lock catch

②

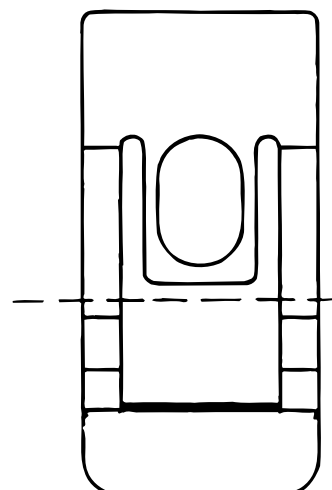
If the welded lock catch must be changed, do like this:

- Grind or file a notch in the lock catch by the dashed line on picture 2.

To make the filing easier, press the end of the lock catch strongly upwards. When the notch is about 0,2 mm deep, you can break the catch.

- Fit a new lock catch on the resting part with the mentioned locking nut.
- Check and adjust the height of the lock catch, see picture. B= 1 +1- 1 mm.

When changing the welded lock catch, order a repair kit with instructions, part no 88010 98.



Product: DW95	Door Spring	Group: 20	
Date: 98-03-12		Number: 77 R	
Reference: N-Å Carlsson		ÄO: 4203	Sida: 1(1)

There are three different sets of door springs for DW 95.

The door springs are fitted according to below;

8058491-49 fitted on all standard machines.

8060232-49 fitted on integrated / fully integrated.

8071323-49 Suitable for use with Wooden doors heavier than 5,5 kg.

Art. no.	Colour marking	Weight on wooden door	
		Integrated	Full integrated
Per / 1 peace			
8058491-49	-	0,5 - 4,0 kg	0,5 - 4,0 kg
8060232-49	White	2,0 - 5,5 kg	2,0 - 5,5 kg
8071323-49	Red	5,5 - 10,0 kg	4,5 - 9,0 kg only as a spare-part.




Colour mark

Product: DW95	Condensation in air duct nozzle	Group: 20	
Date: 04-10-97		Number: 81	
Reference: N-Å Carlsson		ÄO: 4180	Sida: 1(1)

A problem has been encountered in the sense that air from the fan condenses in the air nozzle, and water drips onto the floor.

To reduce condensation a plastic nozzle, Art. No. 8071078-0, has been introduced and replaces Art. No. 8059887-29 (aluminium) on all models other than integrated/fully integrated models and other models that utilize an aluminium adjustment frame.

The nozzle was fitted as standard to machines manufactured after week 35 1996.

In conjunction with changing to the plastic nozzle, the external opening has been modified to allow the air nozzle to snap into engagement. The plastic nozzle can also be fitted to older machines.

In certain cases, machines equipped with a plastic nozzle have also exhibited a tendency for condensation to form on the plastic nozzle. The nozzle and the air duct of these machines can be modified, as illustrated in Figures 1 and 2. This provides improved distribution of the airflow.

Figure 1: Lower part of air duct. Chamfer the outer ends as indicated by the dotted line.

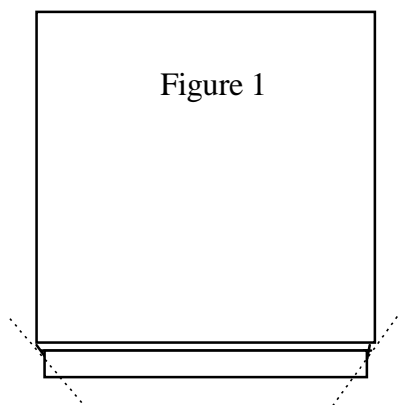
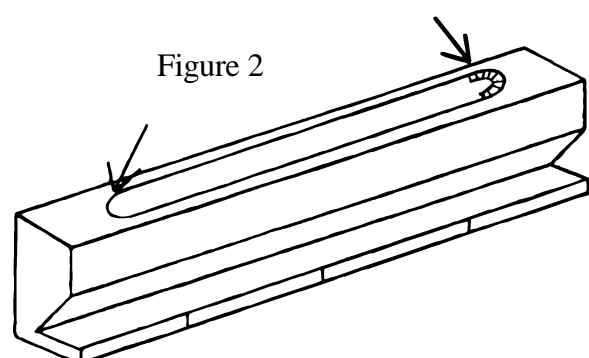


Figure 2: Plastic air nozzle. Remove the plastic edge.

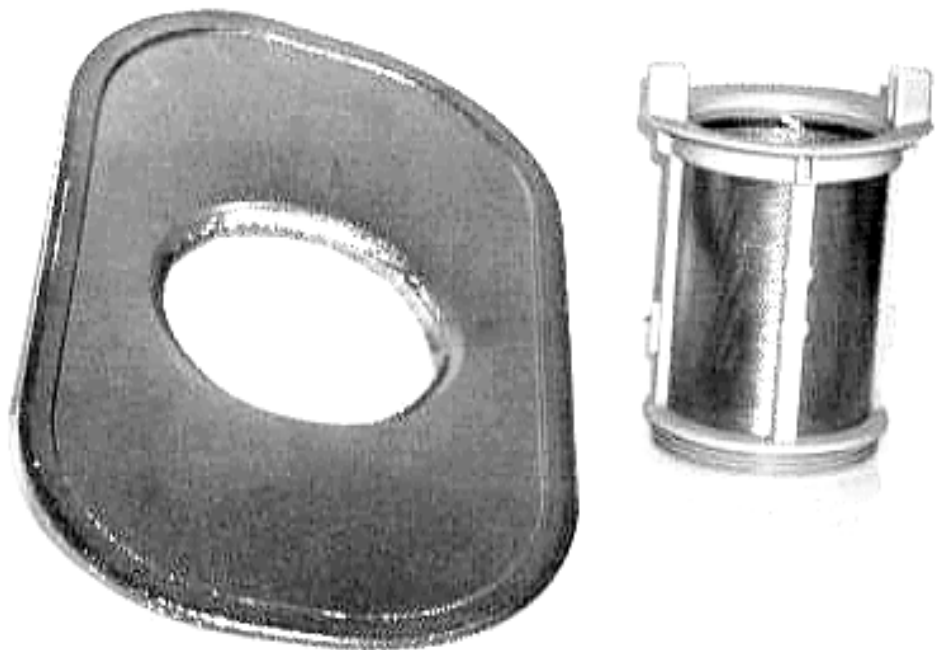


Product: DW 95	A new performance of Strainer	Group: 20	
Date: 96-05-05		Number: 73	
Reference: N-Å Carlsson		ÄO: XXXX	Sida: 1(1)

A new performance of Strainer, Upper part, part no: 8059740 and Insert, Strainer basket, part no: 8057486 has been introduced on all manufactured units with beginning 1996 week 16 (April 16 1996)

Layout and diameter of holes in the perforated plate has been changed. This reduces the flow rate

through the Strainer system which increases the washing performance.



Product: DW 95	Water level in dish-washing machine DW 95	Group: 20
Date: 98-03-13		Number: 84
Reference: Kent Karlsson		ÄO. Page: 1(2)

Switch value transferred to measuring points on the coil arm bearing DW 95.

Programmer machinery with time-controlled inlet.

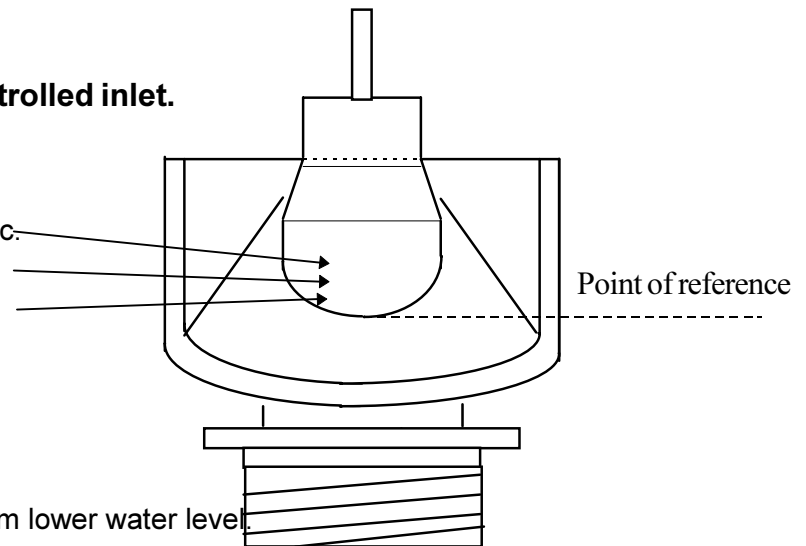
Water flow inlet valve = $3.8 \pm 5\%$ l / min

Time intake programmer machinery = 60 sec.

Max. tol. $3.8 + 5\% = 3.9$ l +3 mm

Nominal $3.8 \pm 5\% = 3.8$ l +2 mm

Min tol. $3.8 - 5\% = 3.6$ l +1 mm



Start with dry bottom well which gives a 2 mm lower water level.

Electronic machinery with time-controlled inlet.

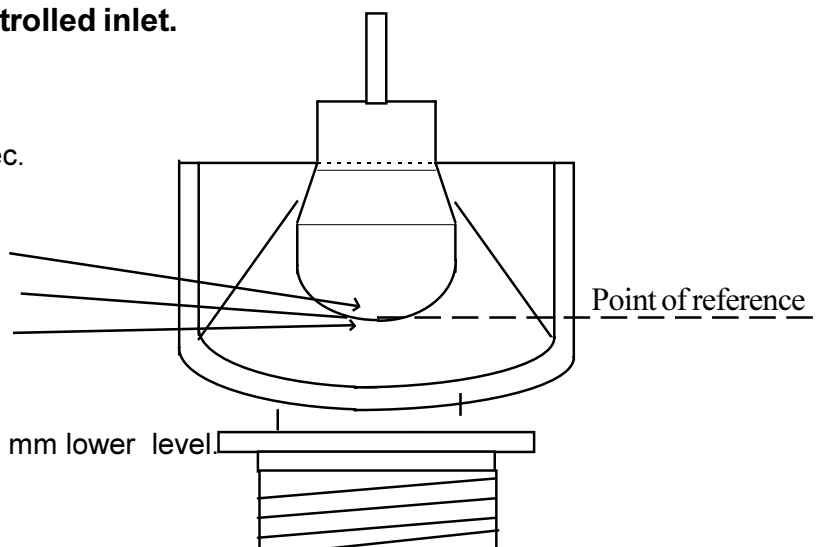
Water flow inlet valve = $3.8 \pm 5\%$ l / min.

Time intake electronic machinery = 57 sec.

Max tol. $3.8 + 5\% = 3.7$ l +1 mm

Nominal $3.8 \pm 5\% = 3.5$ l ± 0 mm

Min tol. $3.8 - 5\% = 3.3$ l -1 mm



Start with dry bottom well which gives a 2 mm lower level.

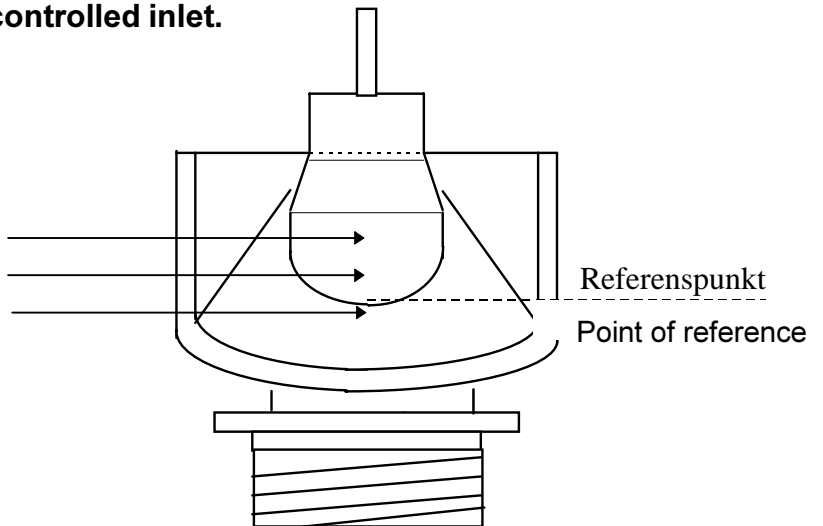
Product: DW 95	Water level in dish-washing machine DW 95	Group: 20	
Date: 98-03-13		Number: 84	
Reference: Kent Karlsson		ÄO:	Page: 2(2)

Switch points transferred to measuring points on the coil arm bearing DW 95.

Programmer machinery with level controlled inlet.

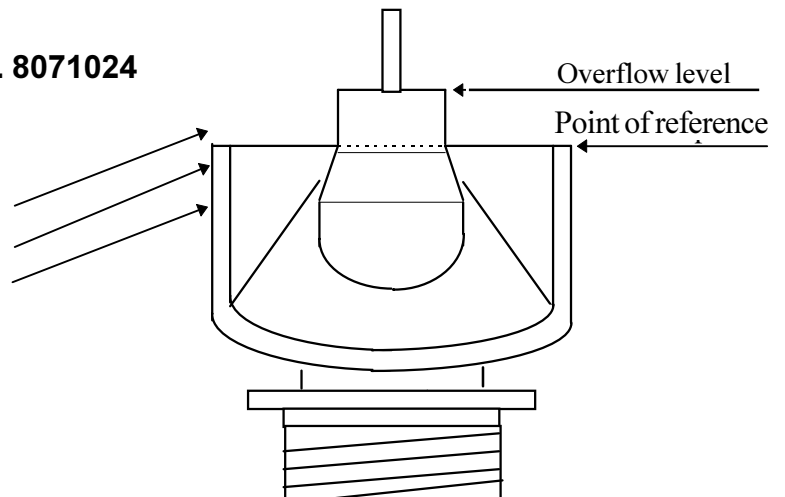
Level actuator article no. 8071025.

	Switch value mm H ₂ O	Water quantity
Max tol.	$95 / 65 + 4 = 4.8$ l	+ 6 mm
Nominal	$95 / 65 \pm 0 = 3.9$ l	+ 2 mm
Min tol.	$95 / 65 - 4 = 3.3$ l	- 2 mm



Overflow protection guard article no. 8071024

Switch value mm H ₂ O	Water quantity
Max tol. 110 / 80 + 4 = 8.0 l	+ 1 mm
Nominal 110 / 80 = 7.1 l	- 3 mm
Min tol. 110 / 80 - 4 = 6.3 l	- 7 mm



Overfill to overflow approx. 9.4 l mm (with horizontal machinery).

Product: DW 95	New Bottom Well	Group: 20
Date: 96-12-12		Number: 74
Reference: N-Å Carlsson		ÄO: XXXX Sida: 1(2)

In order to improve the reliability in the level system, the bottom well has been modified.

The following changes have been made:

1. The pressure chamber has been changed, this leads to modified level switch values.

Note. When installing a new bottom well, the level switches must also be replaced.

The new level switches have article no. 8071024 (for overflow safeguard N1) and article no. 8071025

(for level-controlled timer operated machines).

When exclusively replacing level switches, the same article no. should be used as that which was replaced.

“Complete Bottom Well“ with level switch and flexible tubing can be ordered as follows:

Bottom well level-controlled timer operated machines. Article no. 8801122

Bottom well, others. Article no. 8801123

2. A drainage hole has been introduced to drain any water leakage in a certain direction.

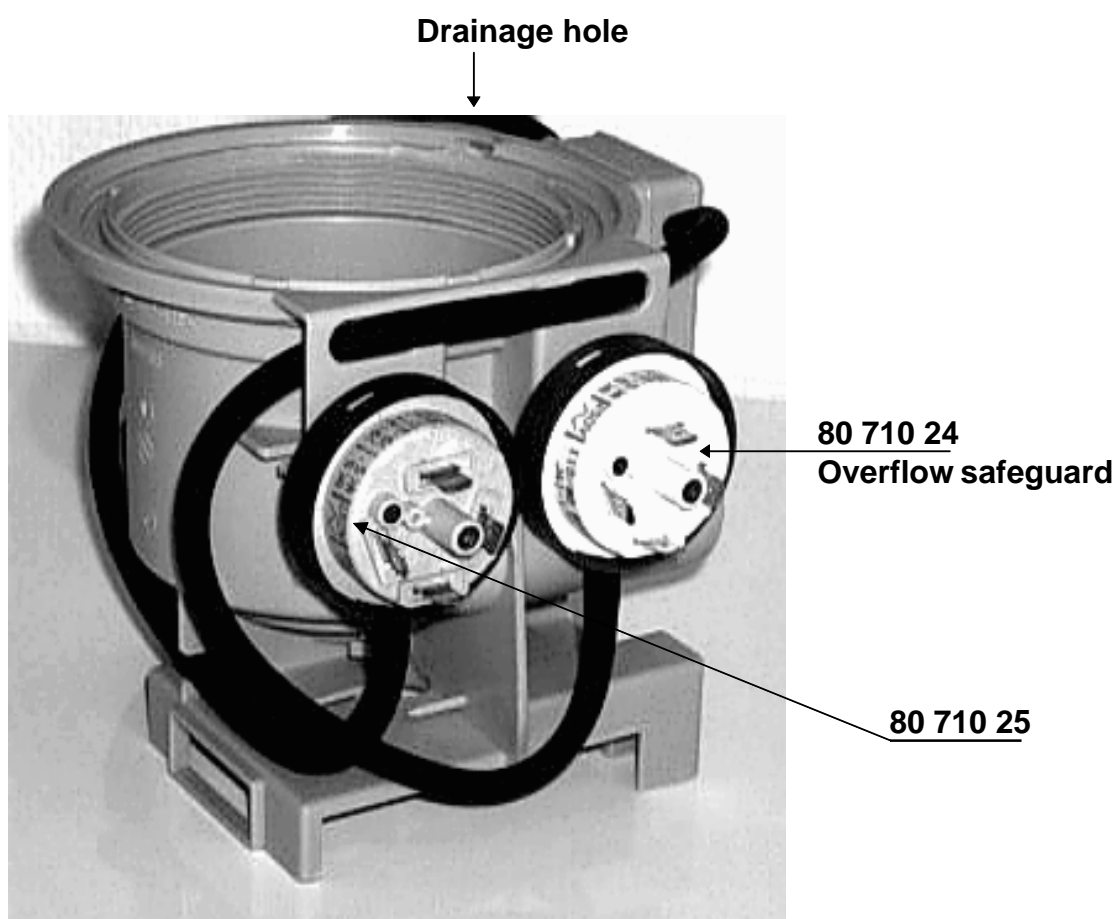
This signifies

that the splash protector, article no. 8070869 (above the micro switch), is excluded.

Product: DW 95	New Bottom Well	Group: 20
Date: 96-12-12		Number: 74
Reference: N-Å Carlsson		ÄO: XXXX Sida: 2(2)

Note!

The positioning of the level switches has been changed. The overflow safeguard, article no. 8071024, is now always found at the back of the bottom well.



Product: DW950-955	Faults within the softening system for DW95	Group: 20	
Date: 95-10		Number: 72	
Reference: Göte Härefors		ÄO: XXXX	Sida: 1(2)

When the water softening system do not work it affects the dish goods. A coating ,primary on glass and stainless surfaces, raises. The goods can also obtain a taste of salt. These faults are results of different things and can be measured by following:

Coating on the dish goods:

1. Fault: There is no salt in the salt container (5).
Measure: Refill the salt container.

2. Fault: The salt container cover (1) is leaking.
Measure: Make sure that the cover is tightened and that the o-ring sealing (2) is whole.

3. Fault: The salted water is not pressed down into the resin container. (3: the container in the softener where the salted hard water is delimed).
Measure: Make sure that the water flows out through the anti-siphon device outlet opening (8). This shows through the inlet grill during the regeneration-sequence (inlet valve 7 is open for 10-60 seconds immediately before detergent dosage (apply to programme control systems) and immediately after detergent dosage (apply to electronic controlled systems)).

4. Fault: There comes no water from inlet valve 7 during the regeneration-sequence.
Measure: If there is voltage to the valve, exchange the valve. If there is no voltage to the valve, check the programme/electronic control unit.

5. Fault: The anti-siphon device (9) is not working, there is no water flowing through the outlet opening when/during inlet by valve 7. Instead the water leaks out through the air-gap (10) and further into the washing space.
Measure: Exchange the anti-siphon device.

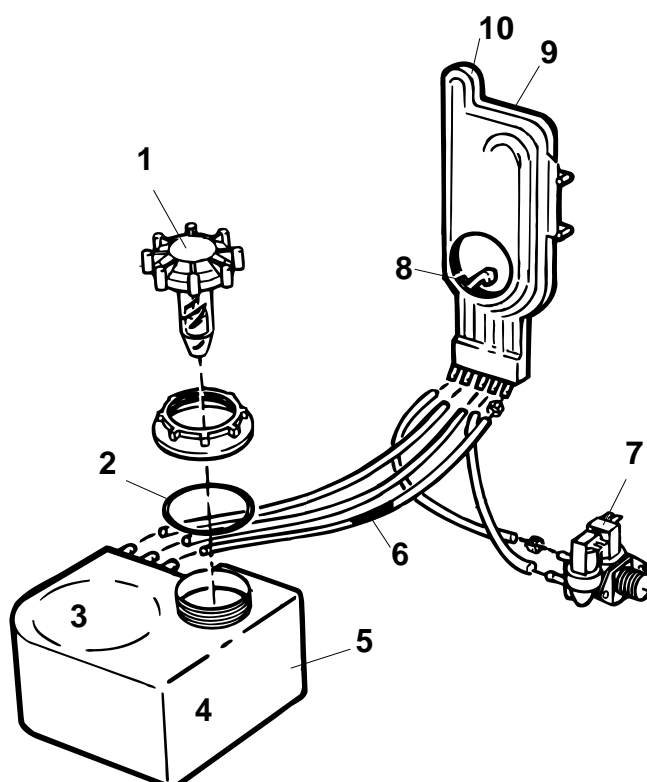
Product: DW950-955	Faults within the softening system for DW95	Group: 20
Date: 95-10		Number: 72
Reference: Göte Härefors		ÄO: XXXX Sida: 2(2)

The dish goods has a taste of salt:

6. See mark 2.

7. Fault: The cheke valve (4: built-in in the resine) is not working. This is a fact when the salt-containers water is drained even though the regeneration is working according to above.

Measure: Mount an extra cheke valve (6). A servicekit can be ordered (art.no. 88 011 04), mounting instructions are included. This is valid for machines produced before week 35. Construcional changes has been made, to eliminate this fault, for machines produced after week 35.



Product: DW95	FAILURE ANALYSIS METHOD DW95.3,.4,.5,.FL	Group: 20
Date: 23-10-97		Number: 82
Reference: Mats Lilja		ÄO: XXXX Sida: 1(1)

To prevent repeated exchanges of control units due to failures in auxiliary components (circulation pumps, inlet valves etc.) a simple check on the control unit shall be done in order to determine what has caused the failure.

When any or several of below control unit components or the conductive pattern (copper foil on the soldering side) close to these components are damaged most probably the external component is the cause of failure and should be ohm-measured and in case of short circuit be exchanged simultaneously with the control unit.

External component	Associated output components on the control unit.
Heater	K1, PF2
Drain pump	K2, P1 5
Circulation pump	K3, P1 3
Inlet valve 1	Q13, R36, R52, D22, D24, P1 7
Inlet valve 2	Q6, R43, R55, D26, D27, P1 8
Combi dispenser	Q12, R50, R58, D21, D23, P2 3
Fan & Vax motor	Q16, R46, R56, D18, D19, P3 3
Interior light	P4 3 (After 9740 the lamp is not connected to control unit)

K:Relay, Q: Triac, R: Resistor, D: Diod, P: Connector.

Note!

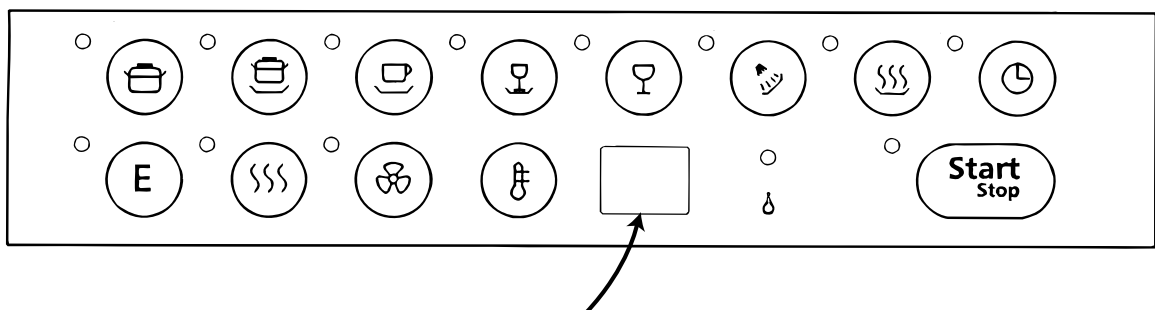
Once the wax motor has dried out, it is not possible to measure for faults.

Remove the wax motor and look for burn marks. For complete certainty, replace the wax motor.

Product: DW 955	Remaining time indication	Group: 20	
Date: 95-10		Number: 71	
Reference: Mats Lilja		ÄO:	Side: 1(1)

Dishwashers with a display panel show how long time remains for the program to run. This is calculated on the assumption that the incoming water is at a temperature of 60 °C.

If the machine is connected to a cold water supply, the time display for remaining time will be incorrect the first time that each program is run. On subsequent runs of the respective programs, the machine will calculate the time on the basis of how long the program took on the previous run.



Product: DW 95	Control unit DW 95	Group: 20
Date: 97-12-08		Number: 75-1
Reference: M. Lilja		ÄO: XXXX

When replacing the control unit in a Type DW 95 dishwasher, it is important to use the correct upgrade number.

The following rules shall apply:

A higher final digit in the upgrade index number always replaces a lower number.

This means, for example, that 8057931 – 04 replaces 8057931, 8057931 – 01 / 02 / 03.

A control unit with a lower upgrade index number can never replace one with a higher number.

To simplify the handling of control units, we will in future use only three types of control board. These control boards will be:

Art. No. 8057931 – 04 for machines of Type DW 95.3, DW 95.4 and DW 95.5.

Art. No. 8057932 – 04 for integrated machines / thick door Type DW 95.3, DW 95.4 and DW 95.5.

Art. No. 8070699 – 04 for fully integrated machines of Type DW 95.FI

The various control units will replace the following Art. Nos.:

Control unit, Art. No. Replaces Art. No.

8057931 – 04 8057931, 8057931 – 01 / 02 / 03, 8057933, 8057933 – 01 / 02 / 03

8057932 – 04 8057932, 8057932 – 02 / 03, 8057934, 8057934 – 02 / 03

8070699 – 04 8070699, 8070699-01

When replacing a control unit, ensure that the correct jumpers are cut according to the following instruction.

Product: DW 95	Control unit DW 95	Group: 20	
Date: 97-12-08		Number: 75-1	
Reference: M. Lilja		ÄO: XXXX	Sida: 2(3)

Changes in software for control unit upgrade index –04:

·Washing programme cycles changed with regard to number of operations, water levels and temperatures. See timer diagram 8058482, upgrade index –03 (complete chart 8058483)

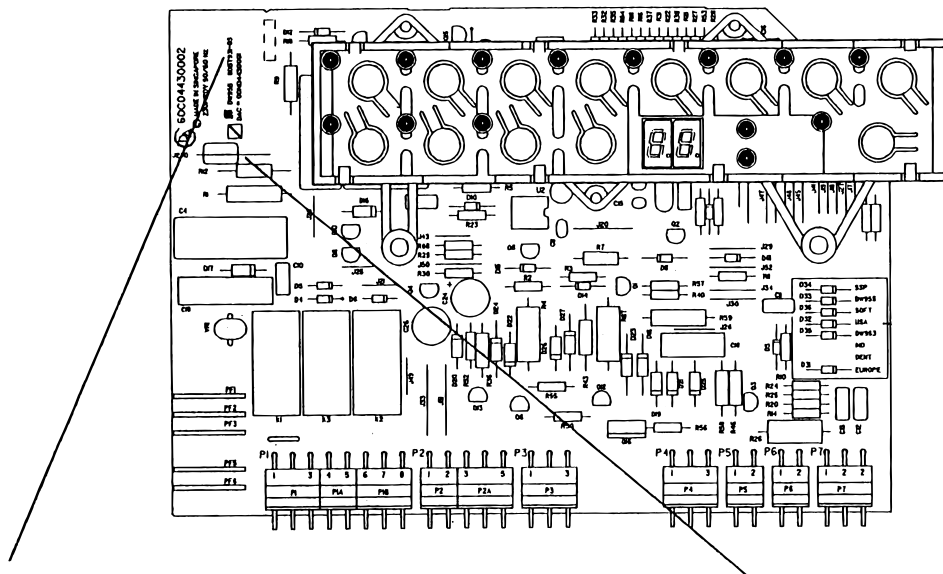
USA jumper not cut.

·**Changed control for water softener: shortened salt intake and extended final rinse. Time-controlled fan after the end of the programme (not applicable to rinsing and plate heating programme). The fan starts up in the following sequence for 3 hours: 20 min off – 10 min on – 20 min off – 10 min on ´, and so on. (Switches off when the door is opened).**

Appendix: Instructions for cutting jumpers, Art. No. 8070852-03, and timer diagram, Art. No. 8058482.

Product: DW 95	Control unit DW 95	Group: 20	
Date: 97-12-08		Number: 75-1	
Reference: M. Lilja		ÄO: XXXX	Sida: 3(3)

Cut of links on control unit for dishwasher DW95



Machine type and part.no.

80 579 31-xx DW95.3, DW95.4, DW95.5 Standard
 80 579 32-xx DW95.3, DW95.4, DW95.5 Integrated
 80 706 99-xx DW95.FI Total integrated

-xx Sparepart unit with higher or equal revision number replaces lower revision

80 579 31-xx replaces 80 579 33-xx
 80 579 32-xx replaces 80 579 34-xx

Cut of links according to defect control unit alt. according to below spec:

To get...	Cut...
Quick wash without heat	SSP
Type DW95.5	DW95.5
Water softner	SOFT
DW95.3: With quick wash program DW95.4: Without eco/bio & timedelay	USA
Type DW95.3	DW95.3
Not used	IND & DENT
DW95.4 & DW 95.FI: With rinse & hold prog.	EUROPE
Control unit set for 230V else 120 V	J230

Product: Dishwasher	Level switch with pressure suppression	Group: 20	
Date: 98-03-13		Number: 85	
Reference: N-Å Carlsson		ÄO: 4554	Side: 1(1)

A level switch with pressure suppression function for the overflow switch, art.no 8071024, to reduce any pressure pulses which can be obtained by opening the door during a cycle.

This level switch was introduced in production week 05, 1998.

The level switch 8071024 can be fitted in all dishwashers of type DW95, meaning even those made before week 05 1998.

