

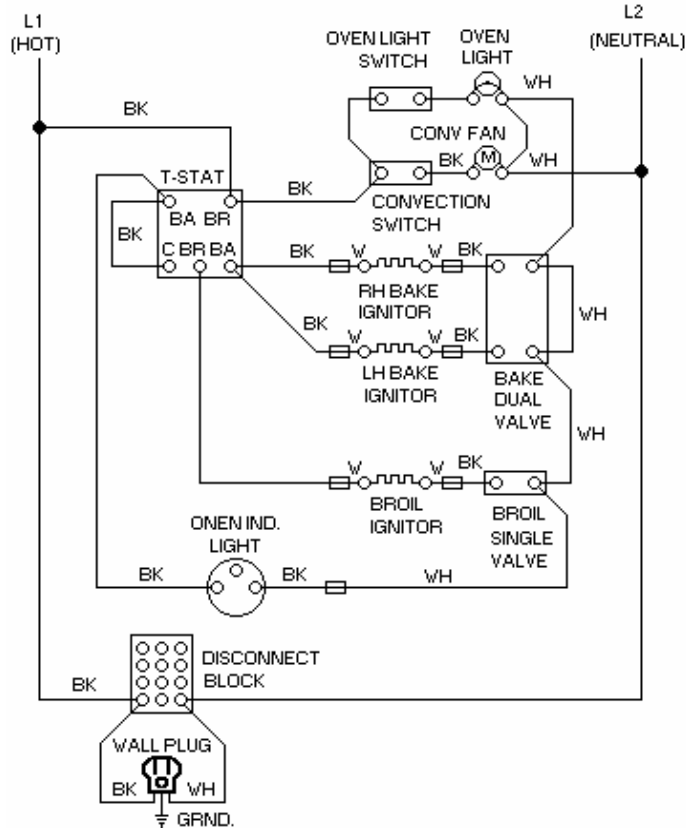
"F"

BUILT-IN GAS WALL OVENS

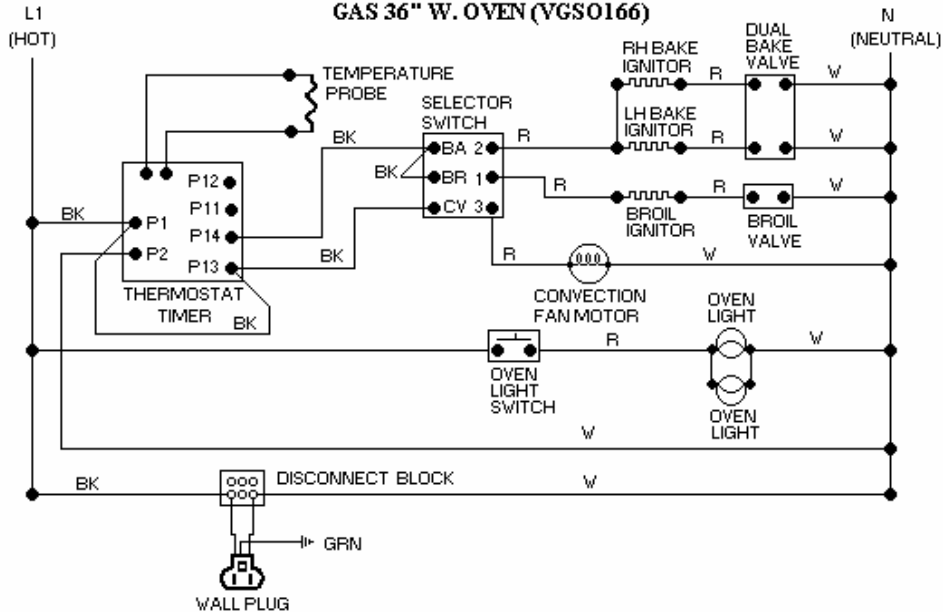
Built-in Gas Wall Ovens

Wiring Diagram for Gas 36" W. Oven -----	F001
VGSO166 W. Oven-----	F001
VGDO Wiring Diagram-----	F002
Upper Oven Self-Clean Below 650°F ----	F003
Upper Oven Self-Clean Above 650°F. ----	F003
Lower Oven Self-Clean Below 650° F ----	F004
Lower Oven Self-Clean Above 650° F. ---	F004
Upper Oven Timed Bake-----	F005
Lower Oven Timed Bake-----	F005
Manual Bake – Upper & Lower Ovens----	F006
Manual Broil – Upper & Lower Ovens----	F006
VGDO 27" Gas Wall Oven -----	F007
Wiring Diagram Built-in Gas 27" W Double	
Wall Oven-----	F008
Wiring Diagram Built-in Gas 27" W. Double	
Wall oven-----	F009

**WIRING DIAGRAM FOR
BUILT-IN GAS 36" W. OVEN**

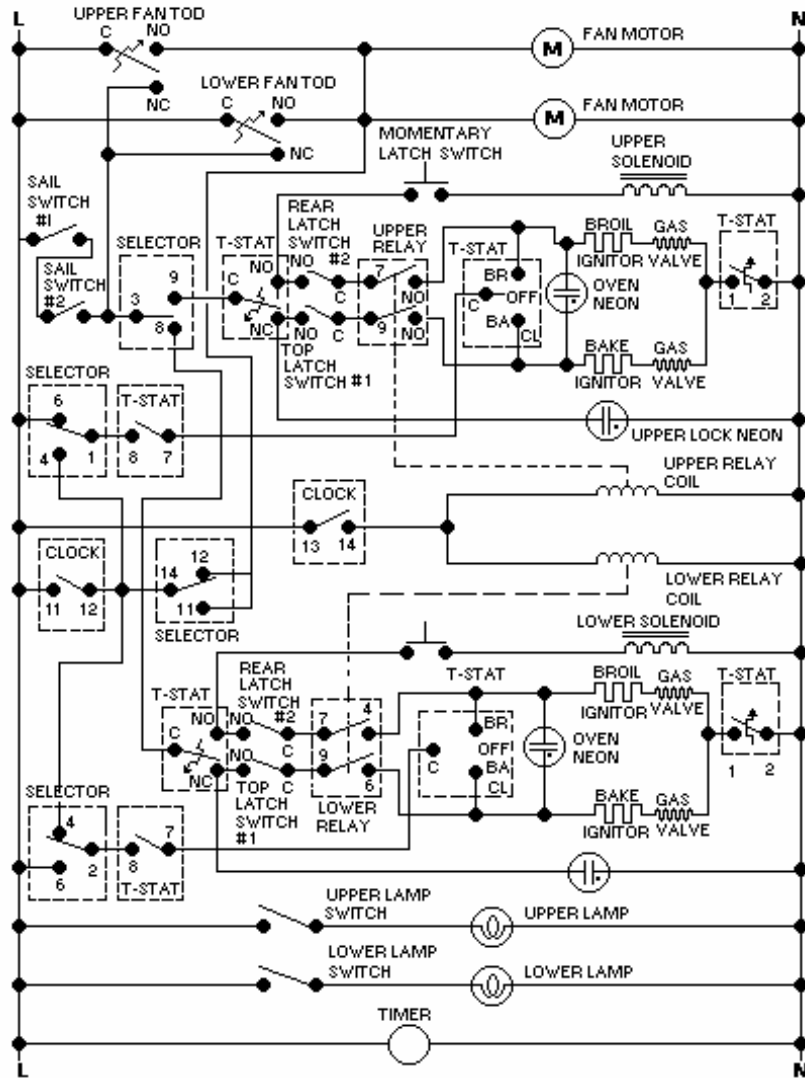


**WIRING DIAGRAM
GAS 36" W. OVEN (VGS0166)**



WARNING: ELECTRICAL GROUNDING INSTRUCTIONS:
THIS APPLIANCE IS EQUIPPED WITH A THREE PRONG
GROUNDING PLUG FOR YOUR PROTECTION AGAINST
SHOCK HAZARD AND SHOULD BE POUGGED INTO A
PROPERLY GROUNDED THREE PRONG RECEPTICAL.
DO NOT REMOVE THE GROUNDING PRONG FROM THE
PLUG.

VGDO WIRING DIAGRAM



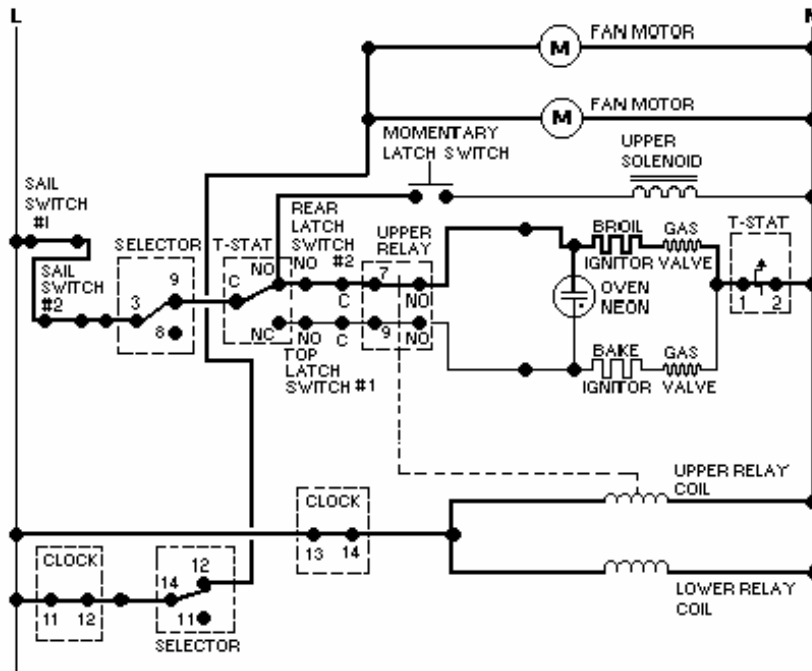
SELECTOR SWITCH POSITION TABLE									
	1-4	1-6	2-6	2-4	3-8	3-9	10-13	14-11	14-12
MANUAL									
LOWER TIMED									
UPPER TIMED									
UPPER CLEAN									
LOWER CLEAN									

O - CLOSED CIRCUIT

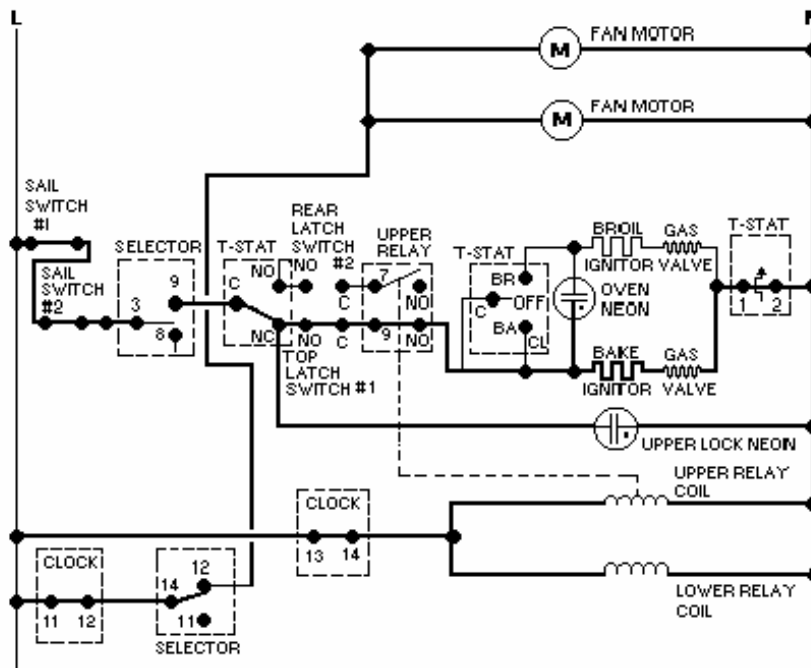
DIAL	THERMOSTAT CONTACTS					
	1-2	COM NO	COM NC	C-BR	C-BA	7-8
OFF	NS	O	X	O	O	O
BAKE	CYCLES	NS	NS	O	X	X
BROIL	CYCLES	X	O	X	O	X
CLEAN	CYCLES	BELOW 700°	ABOVE 700°	O	X	O

O - CLOSED CIRCUIT
X - CLOSED CIRCUIT
NS - NOT SPECIFIED

VGDO WIRING DIAGRAMS

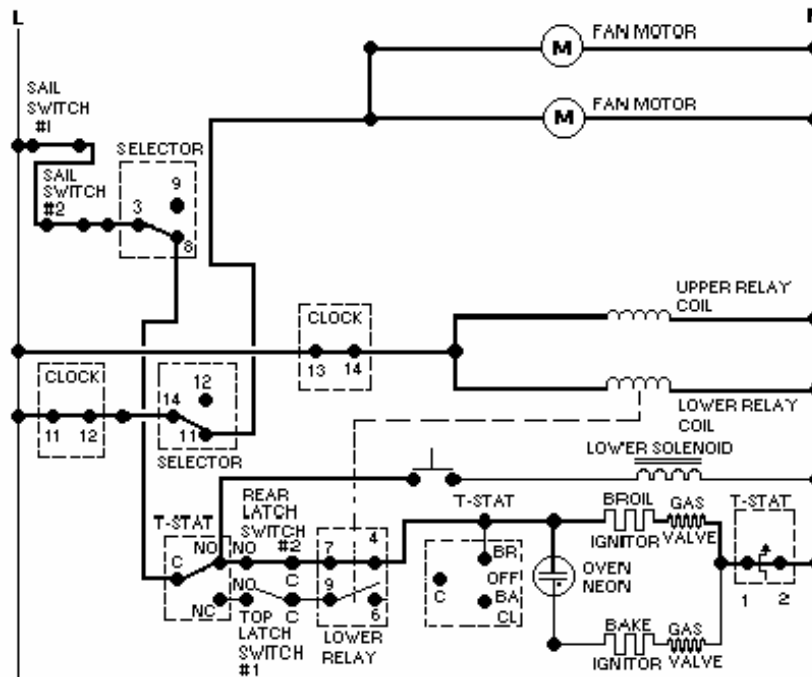


UPPER OVEN SELF-CLEAN CIRCUIT - BELOW 650 -700 F.
 CLOSED THERMOSTAT CONTACTS CPM - NO, 1-2 CYCLING,
 CLOSED SELECTOR SWITCH CONTACTS 1 - 6, 2 - 6, 3 - 9, 14 - 12
 CLOSED CLOCK CONTACTS 12 - 11, 13 - 14, CLEAN RELAY
 CONTACTS, LATCH SWITCH CONTACTS, AND SAIL SWITCH
 CONTACTS ARE ALL CLOSED.

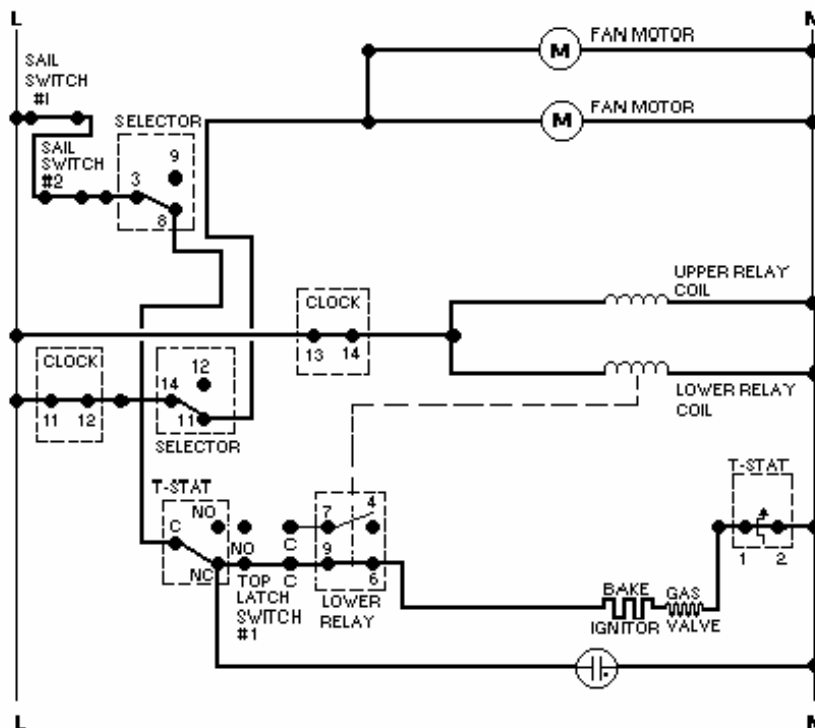


UPPER OVEN SELF-CLEAN CIRCUIT - ABOVE 650°-700°F.
 CLOSED THERMOSTAT CONTACTS CPM - NC, 1-2 CYCLING
 CLOSED SELECTOR SWITCH CONTACTS 1-6, 2-6, 3-9 14-12
 CLOSED CLOCK CONTACTS 12 - 11, 13 - 14, CLEAN RELAY
 CONTACTS, LATCH SWITCH CONTACTS, AND SAIL SWITCH
 CONTACTS ARE ALL CLOSED.

VGDO WIRING DIAGRAMS

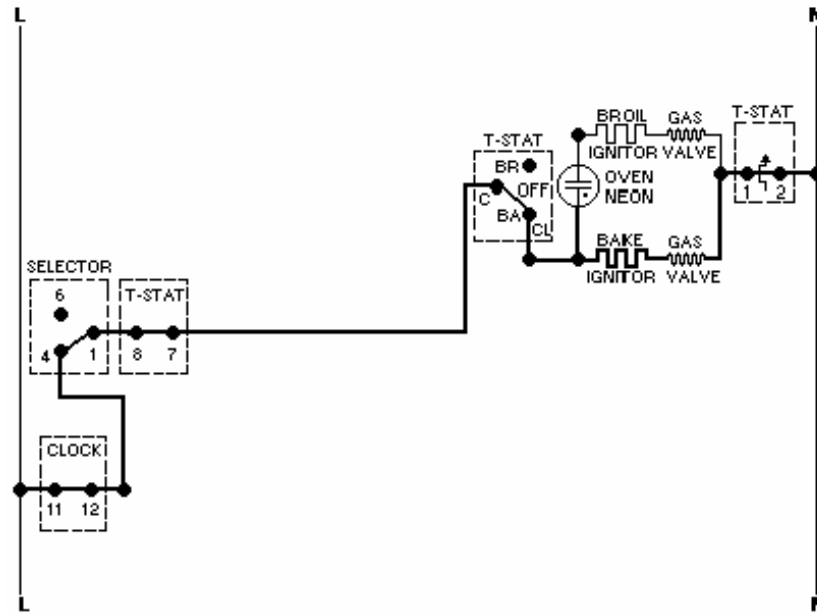


LOWER OVEN SELF-CLEAN CIRCUIT - BELOW 650°-700°F.
 CLOSED THERMOSTAT CONTACTS CPM - NO, 1 - 2, CYCLING CLOSED SELECTOR SWITCHES 1 - 6, 2 - 6, 3 - 8, 14 - 11, CLOSED CLOCK CONTACTS 12 - 11, 13 - 14, CLEAN RELAY CONTACTS, LATCH SWITCH CONTACTS, AND SAIL SWITCH CONTACTS ARE ALL CLOSED

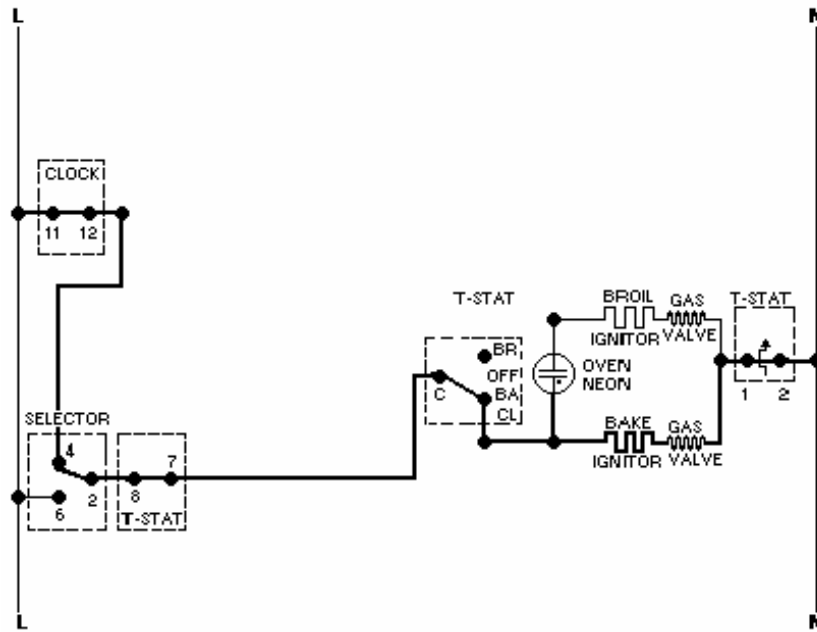


LOWER OVEN SELF-CLEAN CIRCUIT - ABOVE 650 -700 F.
 CLOSED THERMOSTAT CONTACTS CPM - NC, 1-3 CYCLING, CLOSED SELECTOR SWITCH CONTACTS 1-6, 2-6, 3-8, 14-11, CLOSED CLOCK CONTACTS 12-11, 13-14, CLEAN RELAY CONTACTS, LATCH SWITCH CONTACTS, AND SAIL SWITCH CONTACTS ARE ALL CLOSED.

VGDO WIRING DIAGRAM

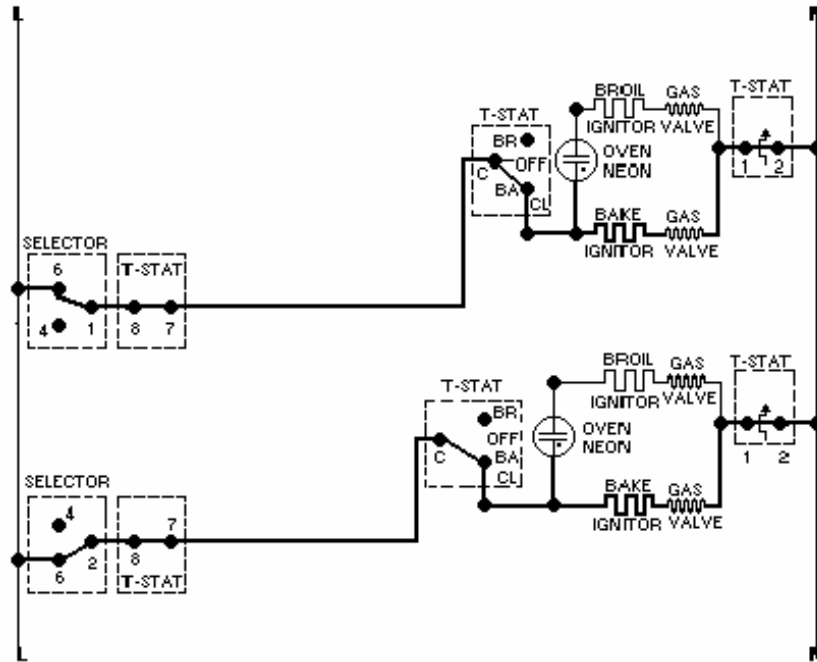


UPPER OVEN TIMED BAKE CIRCUIT - CLOSED THERMOSTAT
 CONTACTS C - BA, 7 - 8, 1 - 2 CYCLING, CLOSED SELECTOR
 SWITCH CONTACTS 1 - 4, 2 - 6, CLOSED CLOCK CONTACTS 11 - 12

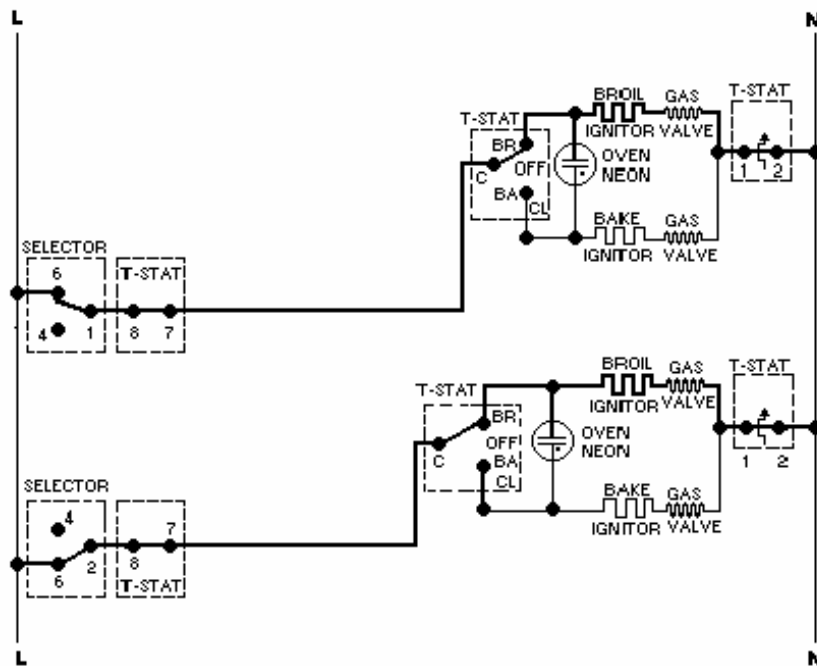


LOWER OVEN TIMED BAKE CIRCUIT - CLOSED THERMOSTAT
 CONTACTS C - BR, 7 - 8, 1 - 2 CYCLING, CLOSED SELECTOR SWITCH
 CONTACTS 1 - 6, 2 - 4, CLOSED CLOCK CONTACTS 11 - 12.

VGDO WIRING DIAGRAM

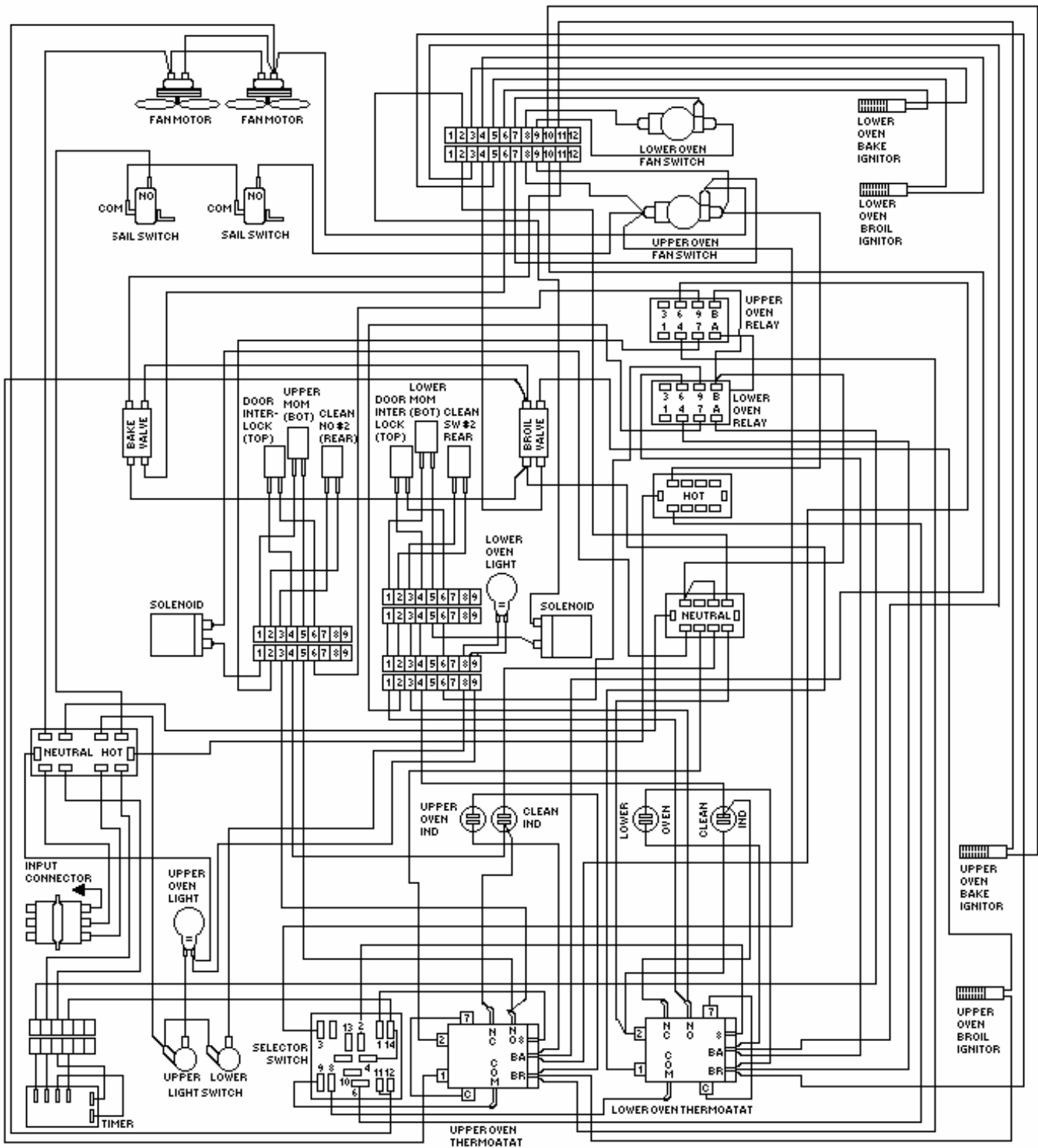


MANUAL BAKE CIRCUITS - UPPER & LOWER OVENS
 CLOSED THERMOSTAT CONTACTS C - BA, 7 - 8, 1 - 2 CYCLING,
 CLOSED SELECTOR SWITCH CONTACTS 1 - 6, 2 - 6.

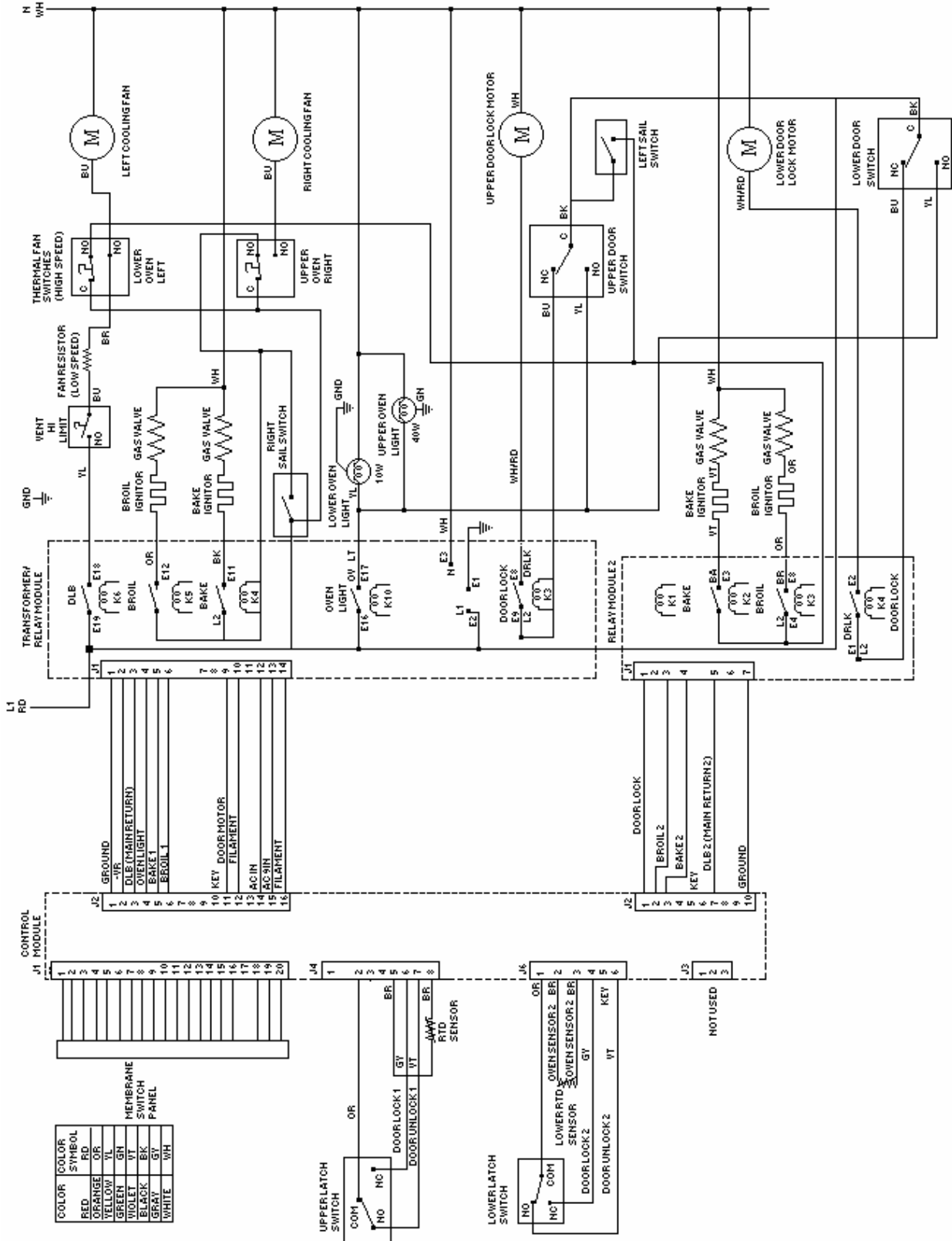


MANUAL BROIL CIRCUITS - UPPER & LOWER OVENS
 CLOSED THERMOSTAT CONTACTS C - BR, 7 - 8, 1 - 2 CYCLING.
 CLOSED SELECTOR SWITCH CONTACTS 1 - 6, 2 - 6.

VGDO WIRING DIAGRAM



SCHEMATIC WIRING DIAGRAM VGDO 271 BUILT-IN GAS 27" W. DOUBLE WALL OVEN



VGDO271 WIRING DIAGRAM BUILT-IN GAS 27" W. DOUBLE OVEN

