

HAIER

Twin-tub Washing Machine

Service Manual

PART # WD-8888-19

HAIER AMERICA TRADING, LLC
www.haieramerica.com

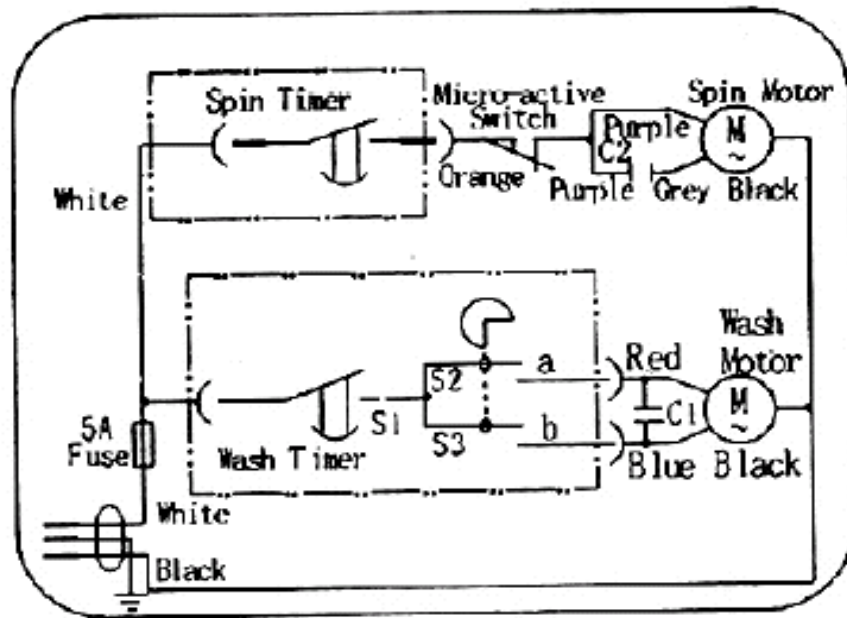
Table Of Contents

Specifications	3
Circuit Diagram	4
External Dimension Sketch	5
Instructions for Installation	6
Product Briefs and New Features	8
Sequence List of the Timer	8
Common Troubleshooting	9
Instructions for Disassembling and Assembling	13

Specifications

Model	XPB35- AS	XPB30- AS
Rated load capacity, washing and spinning	7.7lb	6.6lb
Rated voltage/ rated frequency	120V~ 50Hz	
Rated input power for washing	260W	
Rated Input power for spinning	120W	
Water quantity (L)	Water level High about 40, Middle about 32, Low about 25	
Dimensions (inch)	L 28.3 W 16.5 H 32.9	
Washing pattern	New current	
Weight (lb)	About 22.0	
Water intake pressure (Mpa)	0.2x10 ⁵ Mpa ~ 2x 10 ⁵ MPa	

Circuit Diagram



Protective device

- Washing motor is equipped with protective device.
- The overload protective device is inside the motor. When the motor is overloaded or running into breakdown, the protective device will act to stop the motor. When the breakdown is solved, the motor will resume running.

External Dimension Sketch

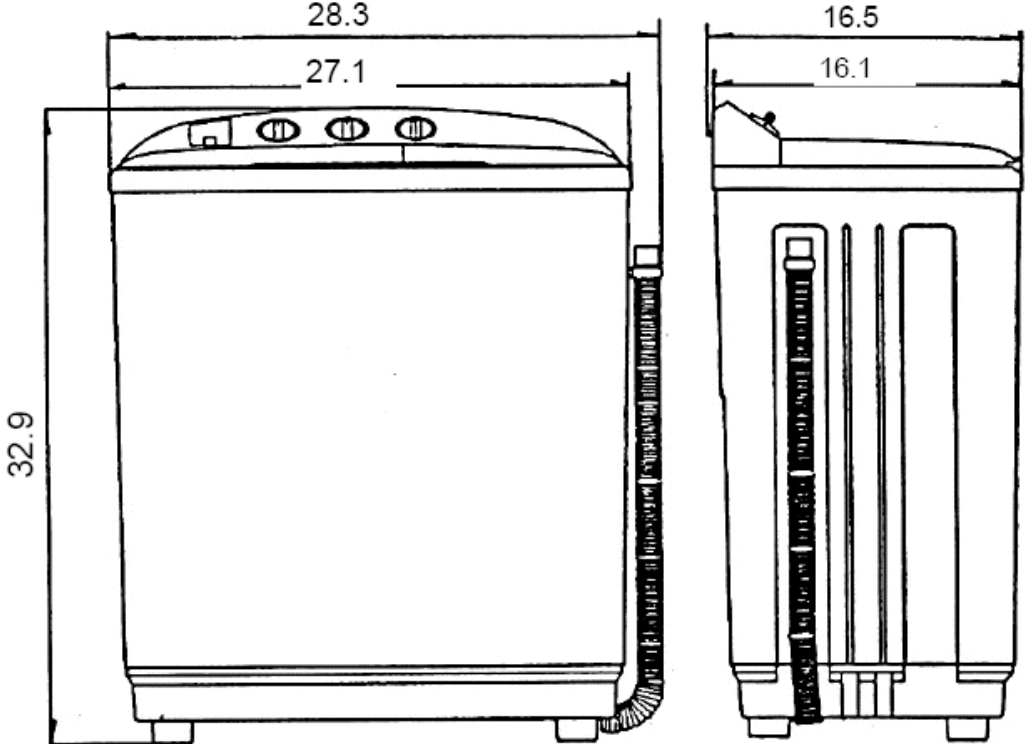


Figure 1

Instruction for Installation

It is important for your safety and proper use to install and adjust the washing machine properly.

1. Locate the machine to scheduled position

- a. After opening the package, please take out the machine gently and put it to scheduled position.
- b. If machine is installed at area with carpet, the ventilation hole will not be blocked by the carpet.
- c. Do not locate the machine near heating source like the heater. Avoid direct sunlight so as to prevent the plastic components from transforming and color changing.

2. Adjust the installation position

The washing machine will become unstable on slanting and uneven ground. Please adjust the installation position, or add suitable cushion under the foot so as to make it stable. Hang the bucket with weight to see if the washing machine is horizontal thus can guarantee stable working of the machine.

3. Do not share the socket with other appliances. Do not use power sources other than the indicated one. Keep the power plug clean.



It's dangerous to connect it with gas tube and tap water tube



This and shall be grounded reliably.

4. Install the earthing wire

The earthing terminal of the power plug shall be earthed reliably. Do not link it to the water tap pipeline or gas pipeline.

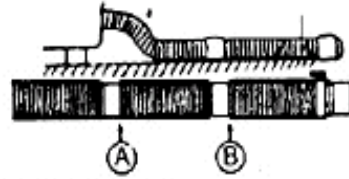
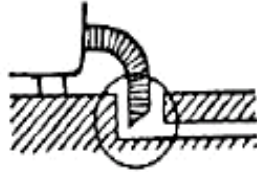
5. Use of the drain hose

- a. Put down the drain hose evenly on the ground. No high obstacles are permitted at the middle part.
- b. If the drain hose is too long for use, you can cut it at middle position.
- c. Do not step on or squeeze the drain hose.
- d. If you need extra drain hose, please purchase it separately from the original hose dealer. However the length shall not be less than the original hose.



Below 3.9 in

Cut the front end slantingly to make smooth drainage



In case of needing extra drain hose, please purchase it separately.
Do not step on or squeeze the drain hose



6. Install the water inlet hose

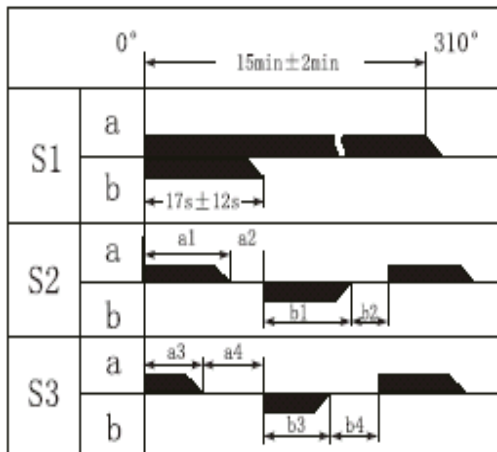
If the water inlet hose is installed poorly, it may drop under too high pressure and result in leakage. The proper installation method is to put one end of it into water and the other end into ejection joint of the control panel.

Product Briefs and New Features

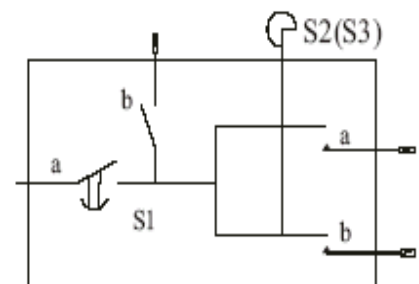
- The product has good comprehensive performance. It adopts streamline design with nice and graceful shape. The plastic shell is free of rustiness in its whole working life.
- The product's structure of washing frame and water-reception groove, reduces the harmful effects of the vapor on the electric parts significantly. Therefore, it is safe and reliable to use.
- The design of eccentric pulsator brings richer vibrant pattern and more even washing effects.
- The fully enclosed base frame is water-proof and noise reducing. It can realize "quiet washing".
- Having benefited from our comprehensive energy saving technology, the product can work under wide voltage range. You need not worry about the fluctuation of the voltage any more.

Time Sequence List of the Timer

The product integrates the traditional timer and the selector switch into one component, therefore improving the reliability. It is also convenient to operate and repair.



		S2 (strong)		S3 (standard)	
symbol		time limit (S)		symbol	time limit (S)
a1	On	6 ± 1.5 0.8		a3	4.5 ± 1 0.8
a2	Off	1.8 ± 0.6		a4	3.3 ± 0.5 0.8
b1	On	6 ± 1.5 0.8		b3	4.5 ± 1 0.8
b2	Off	1.8 ± 0.6		b4	3.3 ± 0.5 0.8



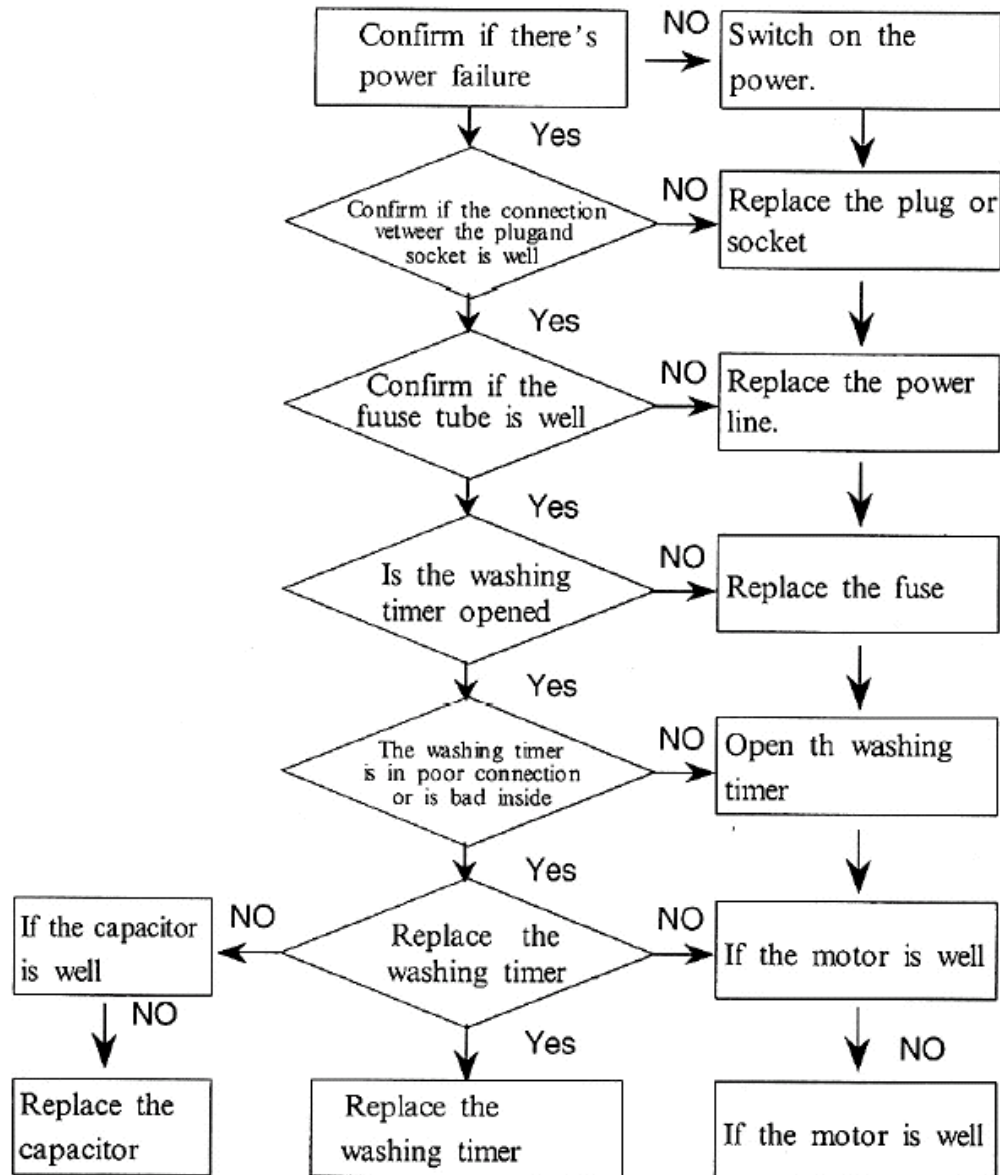
Wash timer

Figuer 12

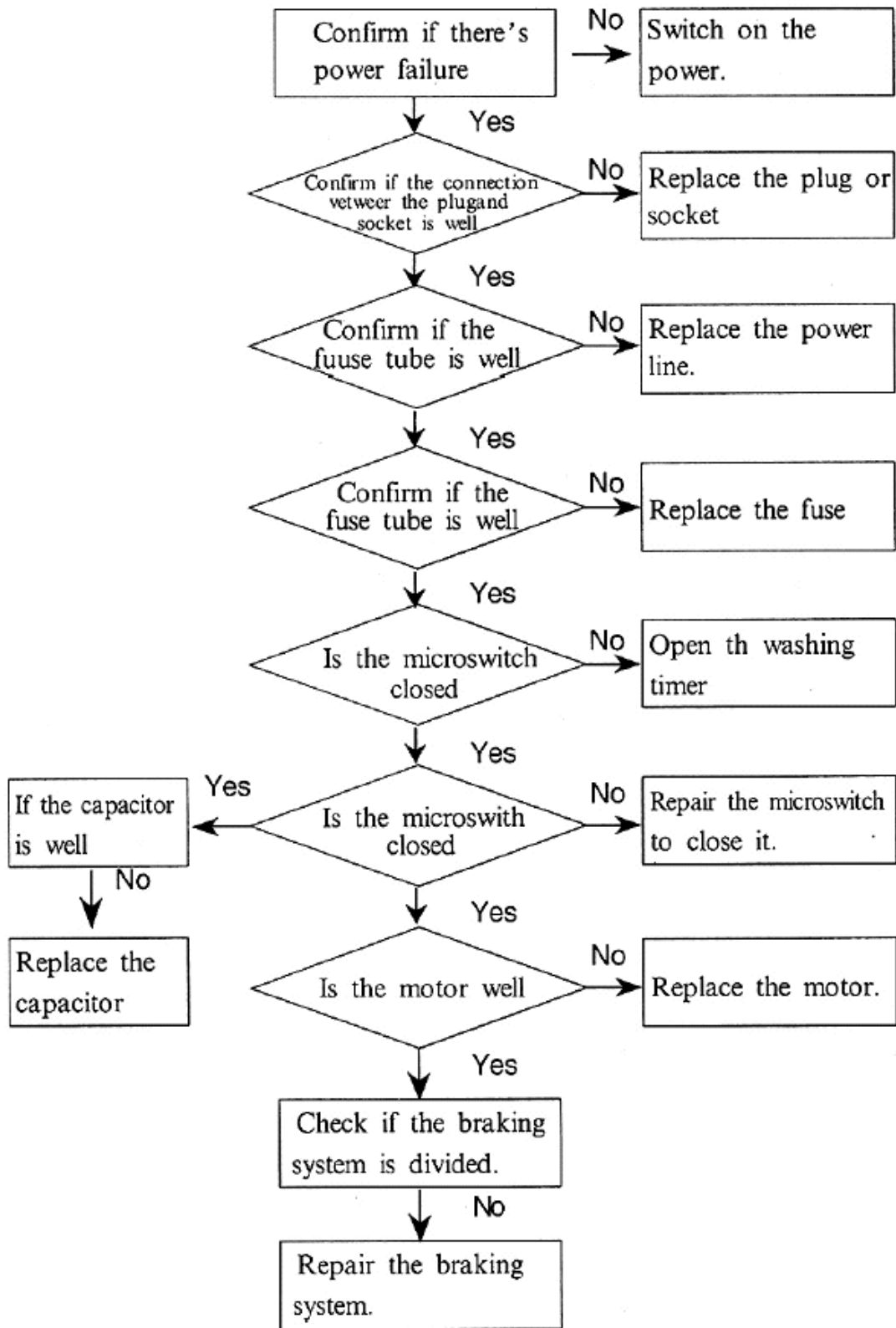
Common Troubleshooting

1. Inserted the power plug but the washing machine does not operate.

Washing part

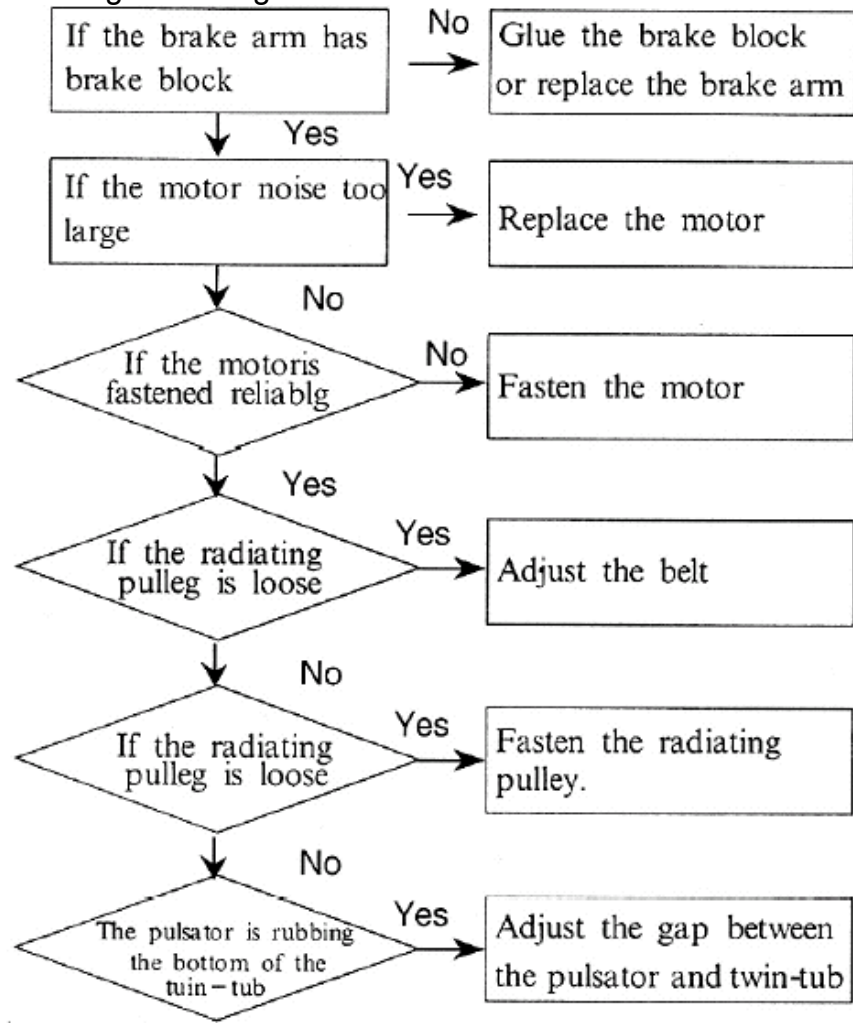


Spinning part



2. There is rubbing sound in breaking.

3. The noise in washing is too large.



4. The pulsator rotates to one direction only (Release the washing timer).

5. The following phenomenon is not breakdowns sometimes. Please check again before sending the machine for repairs.

Phenomena	Reason
The motor does not rotate	● Is the power off?
	● Is the power plug inserted?
The motor does not rotate	● Are there hairpins, coins or metal things taken into the washing tub?
The drainage does not work	● Are there laundries fallen into the spinning tub?
	● Is the front of the drain hose blocked?
	● Is the button set at the "Drain" position?
The spinning does not work or the spinning speed has become slow.	● Is the spinning tub cover closed?
	● Is the axle of the spinning tub twisted with the laundries?
There is abnormal sound and violent vibration in spinning	● Is the spinning overloaded with laundries?
	● Is the gland pressed in evenly?
	● Are the laundries put slantingly?
	● Is the machine located on even ground?

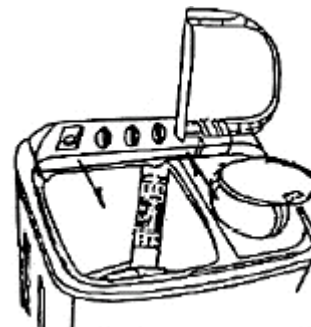
Instructions for Disassembling and Assembling

1. Instructions for after-sale service

- Be sure to switch off the power in disassembling or repairing.
- In connecting the conductor wires, be sure to use the insulated crimp connecting terminals and box and crimp the wire to reliable position.
- In welding the components, remember to twist the wire first, then weld and insulate it to the switches with the iron.
- In welding the wires with iron, do not touch the resin and insulated parts of the switches with the iron.
- The wires shall not touch the moving parts like the belt, motor pulley brake rod. the sharp edges and the parts with high temperature.
- If the wires have metal part, the wires shall not touch the metal directly. Insulator shall be used between them.
- After assembling, perform water inlet, washing and spinning. Every part shall act normally. Confirm if the leakages, sound and vibration are normal.

2. Disassembling and assembling of the control panel components

Loosen the fastening screws. Move along the directions indicated in the figure to disassemble the control panel. In installation, the beard shall be locked into the insulation holes of the water reception groove and the spinning tub frame.

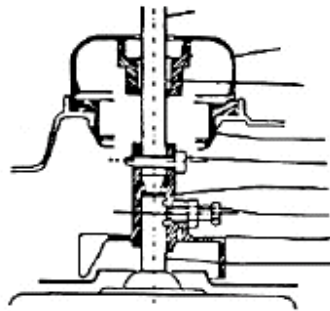


3. Disassembling and Assembling of the components of the spinning tub frame

Disassemble the control panel. Loosen the two fastening screws at the rear of the spinning tub frame, and then the spinning tub frame will be disassembled.

4. Disassembling and Assembling of the spinning tub

Disassemble the spinning tub frame and the fastening screw of the spinning tub axle, and then the spinning tub can be taken out. In installation, the protruding part of the brake wheel inner lining shall be imbedded into the groove on the spinning tub axle.



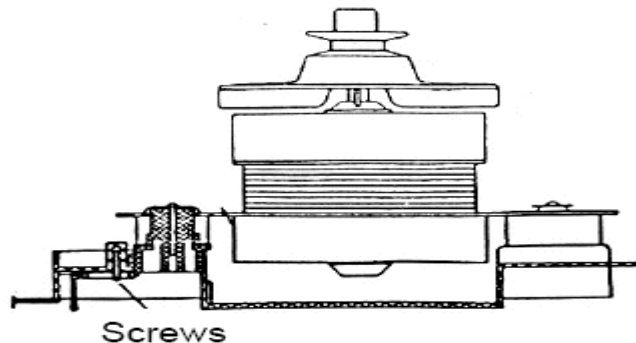
Spinning tub shaft(shafe panel)

Bearing seat
 Oilite bearing
 Inner lining of the bearing seat
 Fastening screw
 Inner Lining of the brake wheel
 brake wheel
 Spinning motor shaft

Transmission of spinning tub.

5. Adjust the tension of the belt

Loosen the fastening screws at the back of the base frame. Move the shift-fixing cushion along the direction indicated in the figure to adjust the tension of the belt. After adjustment, you can fasten the screws.



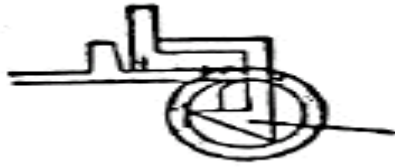
6. Disassembling and Assembling of base frame

- Disassemble the back cover
- Loosen the conductor wire.
- Loosen the fastening screws for the spinning tub axle.
- Divide the spinning tub axle with the brake wheel.
- Loosen the brake hook.
- Disassemble the check band frame from the installation groove of the twin-tub.
- Disassemble the V-belt.
- Take out the drain hose from the beard of the base frame.
- Loosen the fastening screws between the base frame and cabinet, then you can take off the base frame.

7. Disassembling and Assembling of base frame

Once the bearing seat is disassembled, it cannot be used again. Therefore, do not disassemble it as far as possible. If it has to be replaced, first disassemble it as per following steps, then install a new one.

- a. After disassembling the spinning tub as per description of clause 8.4, pull the bearing seat.
- b. Cut off the inner lining of the bearing seat with pliers and take it out.



Correct



Incorrect

- c. Use new bearing seat and inner lining
- d. The bearing seat is a plugging component. Be sure to press it in with the claw of the bearing seat inner lining seat aiming at the hole of the tub. You shall use suitable tools and add pressure evenly around.
- e. After plugging the bearing seat, confirm if the claw is installed to proper position by checking the outside of the twin tubas shown in the picture above.