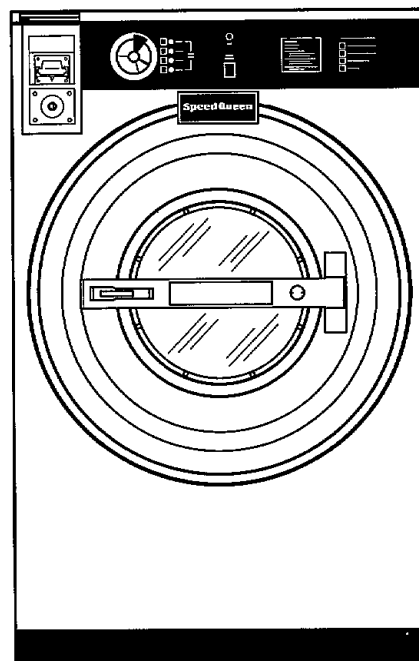


Speed Queen

A **Raytheon** Company

Parts and Service Manual for Commercial SuperSize IV™ Washer-Extractor

Model:
WX40110



Speed Queen Company
Shepard Street
P.O. Box 990
Ripon, Wisconsin 54971-0990

Part No. G176693R2
2/90

▲ WARNING

**FAILURE TO INSTALL, MAINTAIN, AND/OR OPERATE THIS MACHINE
ACCORDING TO THE MANUFACTURER'S INSTRUCTIONS MAY RESULT IN
CONDITIONS WHICH CAN PRODUCE BODILY INJURY AND/OR PROPERTY
DAMAGE.**

NOTE: The WARNING and IMPORTANT INSTRUCTIONS appearing in this manual are not meant to cover all possible conditions and situations that may occur. It must be understood that common sense, caution and carefulness are factors which CANNOT be built into the Washer-Extractor. These factors MUST BE supplied by the person(s) installing, maintaining or operating the unit.

Always contact your dealer, distributor, service agent or the manufacturer about any problems or conditions you do not understand.

TABLE OF CONTENTS

SECTION I PARTS

Control Panel and Meter Housing	3
Dispenser, Cover and Hoses	4
Control Tray and Controls	5
Program Timer Assembly	6
Siphon Break, Inlet Valves and Hoses	7
Rear Channel Assembly	8
Outer Tub Front Panel and Door Assembly	9
Door Bracket Assembly	
(Through Serial No. G0527455)	10
(Starting With Serial No. G0527456)	11
Belts, Pulley and Seal Housing	12
Cylinder and Shaft Assembly	13
Bearing Housing Assembly	14
Outer Tub, Chassis and Control Frame	
Assembly	15
Motor and Capacitors	16
Pressure Hose, Bulb, Drain Valve and Hoses ...	17
Drain Valve Assembly and Drain Elbow	
(Through Serial No. G0527000)	18
(Starting With Serial No. G0527001)	19
Cabinet Top, Side, Front and Rear Panels	20
Special Tools	21

SECTION II SERVICE PROCEDURES

1. Cabinet Top	24
2. Control Panel	24
3. Program Timer	24
4. Cycle Switches	24
5. Pressure Switch	25
6. Contactors (Wash or Spin)	25
7. Inlet Valve	
(Hot Water-Two Track Valve)	25
8. Inlet Valve	
(Cold Water-Single Track Valve)	26
9. Dispenser	26
10. Door Open Switch	
(Through Serial No. G0527455)	26
11. Run Light	26
12. Siphon Break	27
13. Reset (Single Phase Units Only)	27
14. Loading Door	27

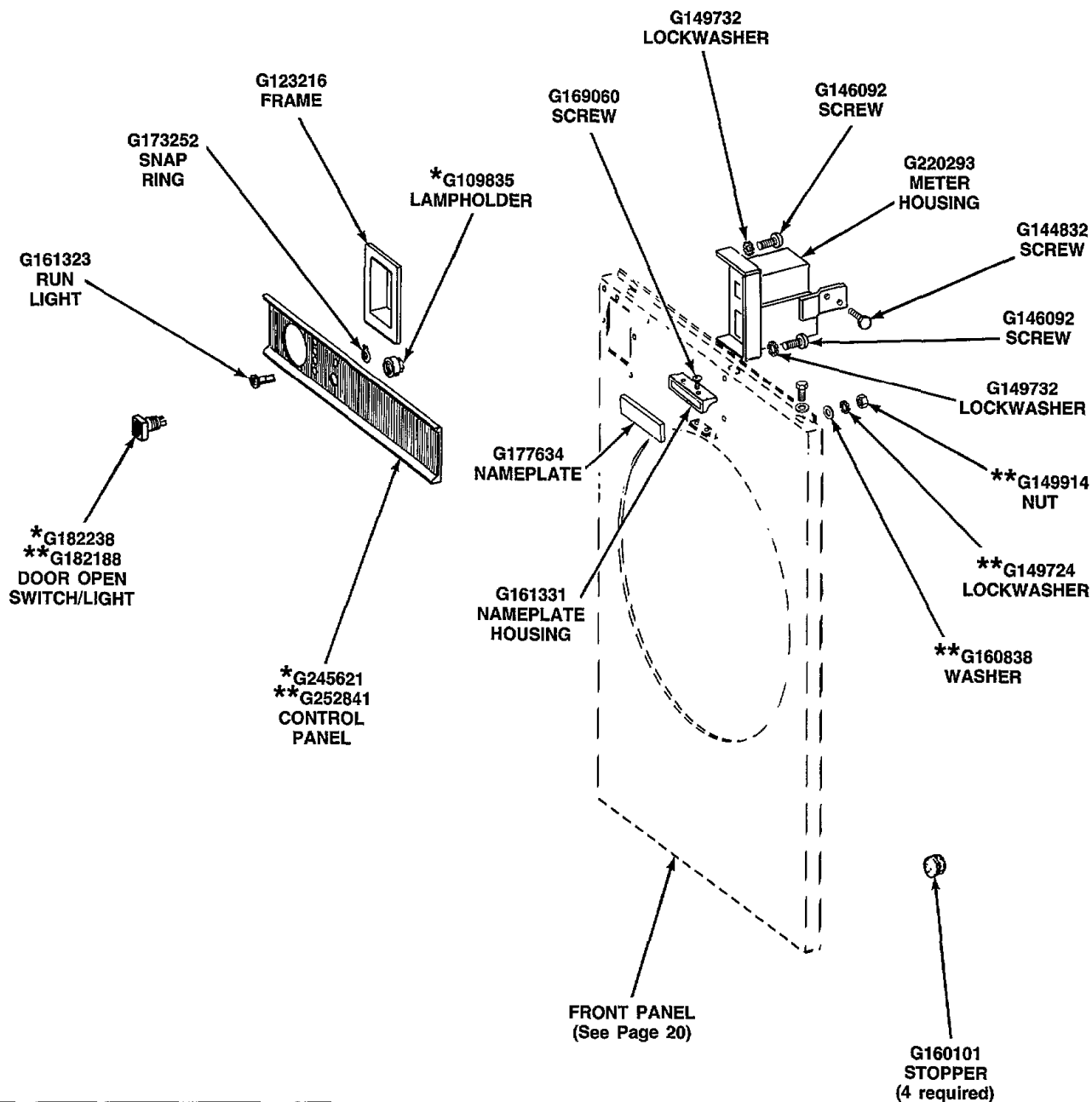
15. Door Lock Assembly or Safety Lock	
Coil and Bracket	27
16. Door Safety Switch	28
17. Door Gasket	28
18. Outer Tub Front Panel	28
19. Front Panel	29
20. Rear Panel	30
21. Belts	30
22. Cylinder Pulley Assembly	30
23. Wash Basket Cylinder and Shaft	
Removal	30
24. Bearing Housing and Seal Housing	31
25. Side Panels (Right or Left)	32
26. Outer Tub	33
27. Motor Removal	33
28. Capacitors	33
29. Pressure Bulb	33
30. Drain Valve	34
31. Fuse Holder and Resistor Assembly	34
32. Terminal Block	34
33. Lock Assembly	34

SECTION III SERVICE HELPS

34. No Hot Water	35
35. No Cold Water	35
36. No Warm Water	36
37. Washer Does Not Start and The Push	
Button "On/Off" Is On	36
38. Cylinder Does Not Fill	37
39. Water Does Not Shut Off	37
40. Water Does Not Drain From Clothes	
Cylinder	37
41. Washer Does Not Tumble	38
42. Washer Does Not Spin	39
43. Motor Overload Protector Cycles	
Repeatedly	39
44. Cylinder Does Not Turn	39
45. Timer Does Not Advance	40
46. Door Will Not Open	40
47. Door Leaks	41
48. Excessive Vibration	41

SECTION I

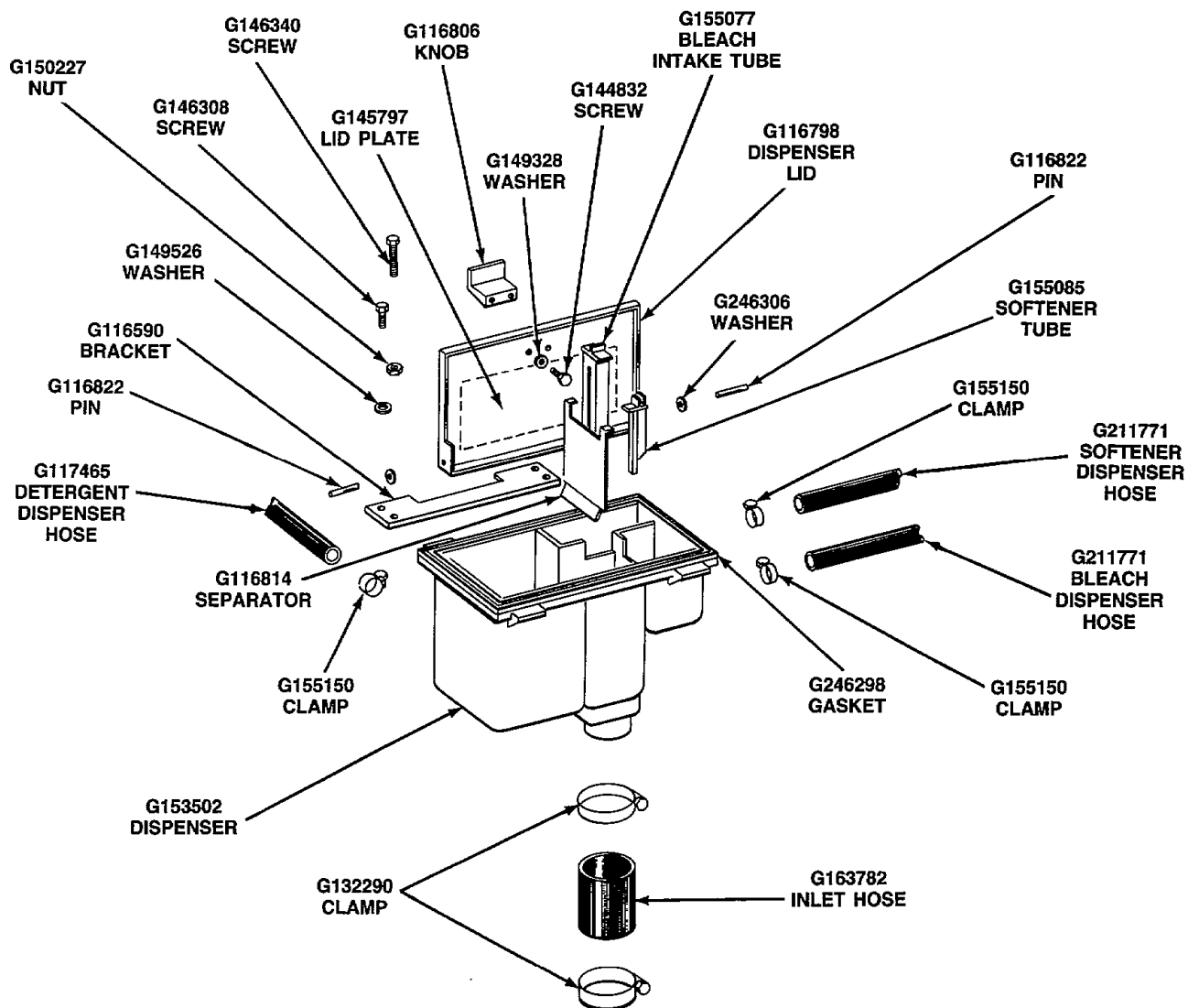
Parts



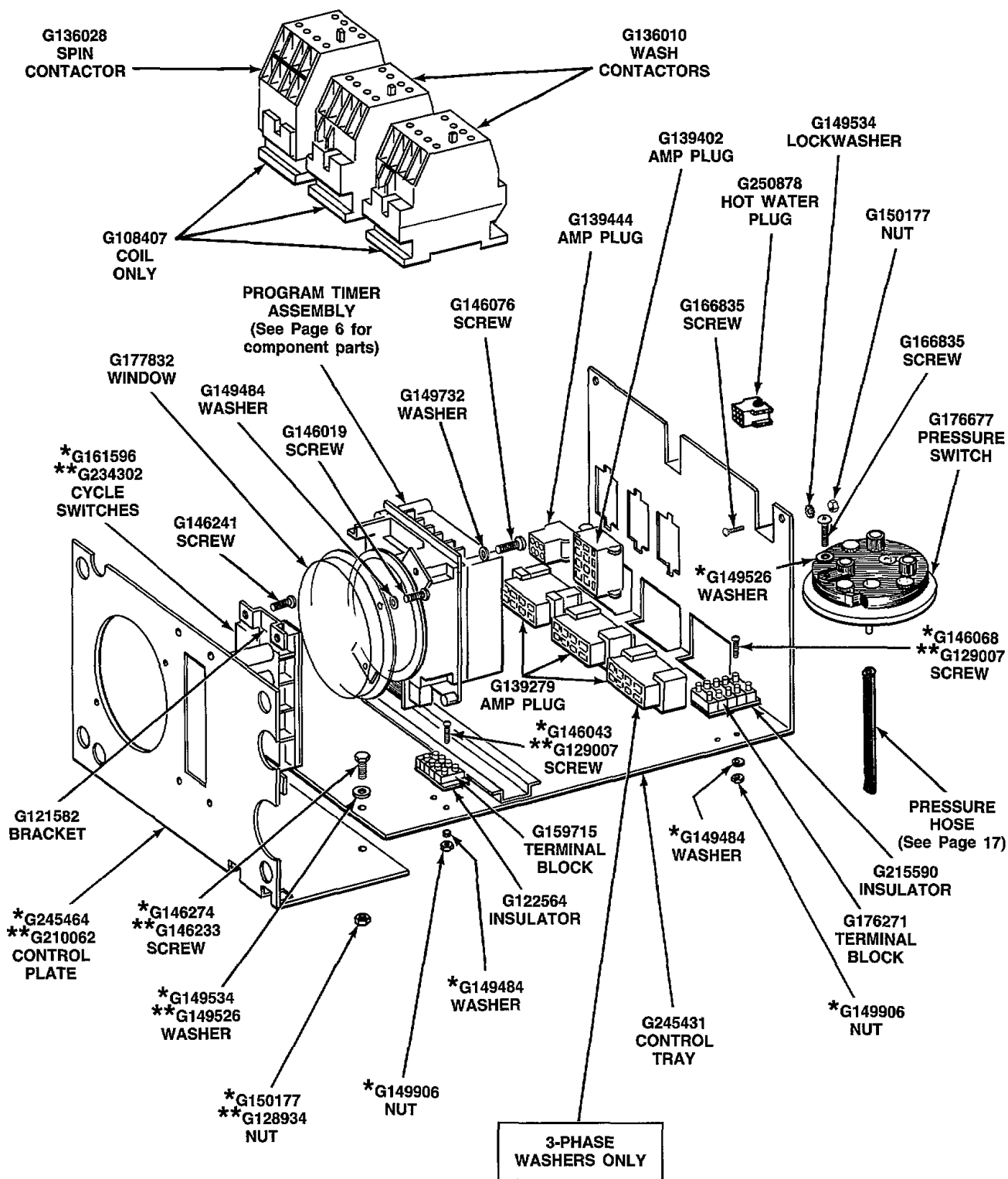
*Use through Serial No. G0527000

**Use starting Serial No. G0527001

CONTROL PANEL AND METER HOUSING

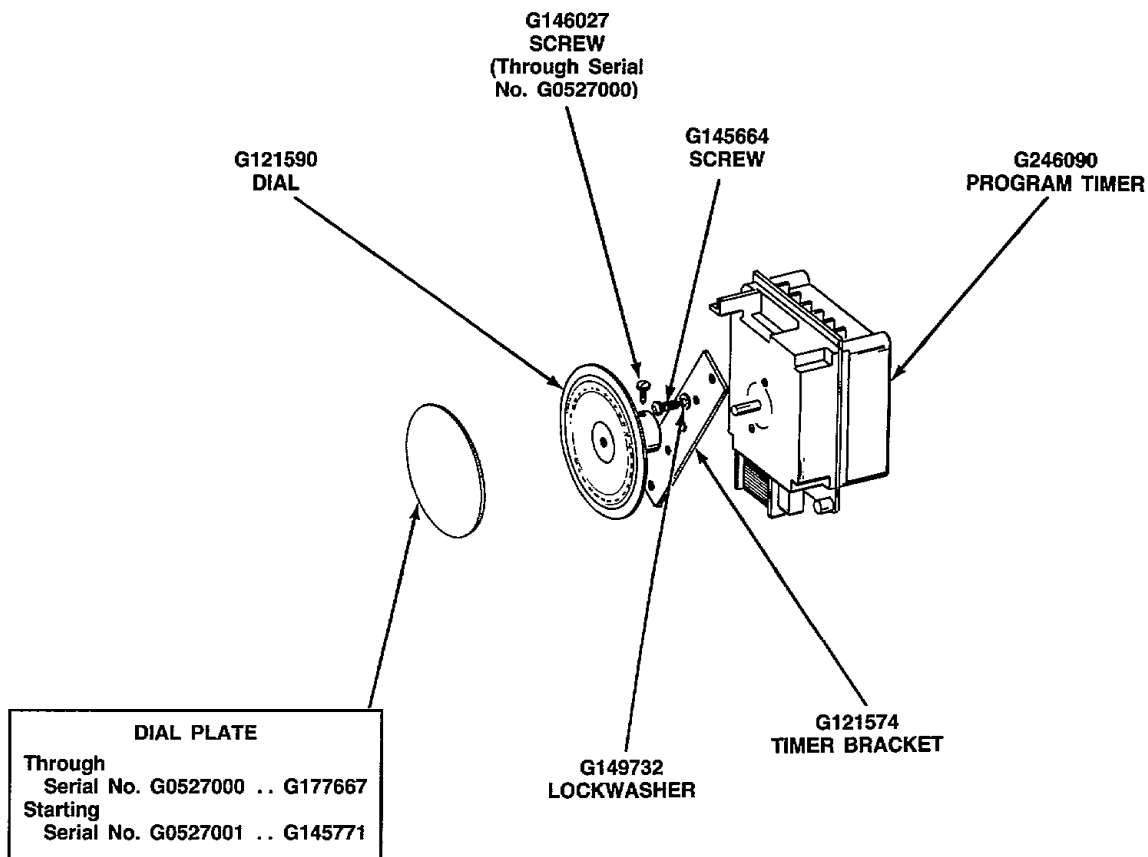


DISPENSER, COVER AND HOSES

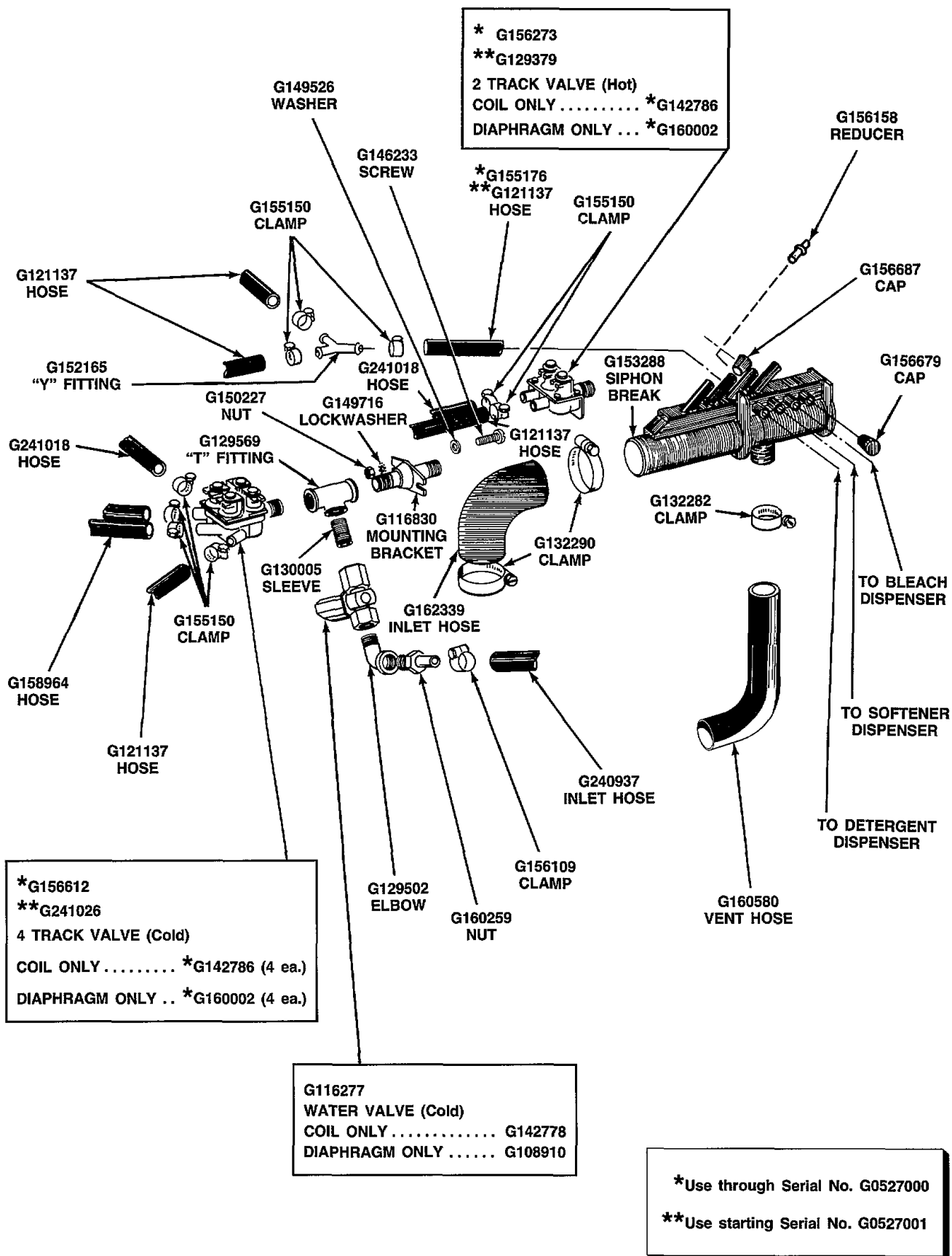


*Use through Serial No. G0527000
 **Use starting Serial No. G0527001

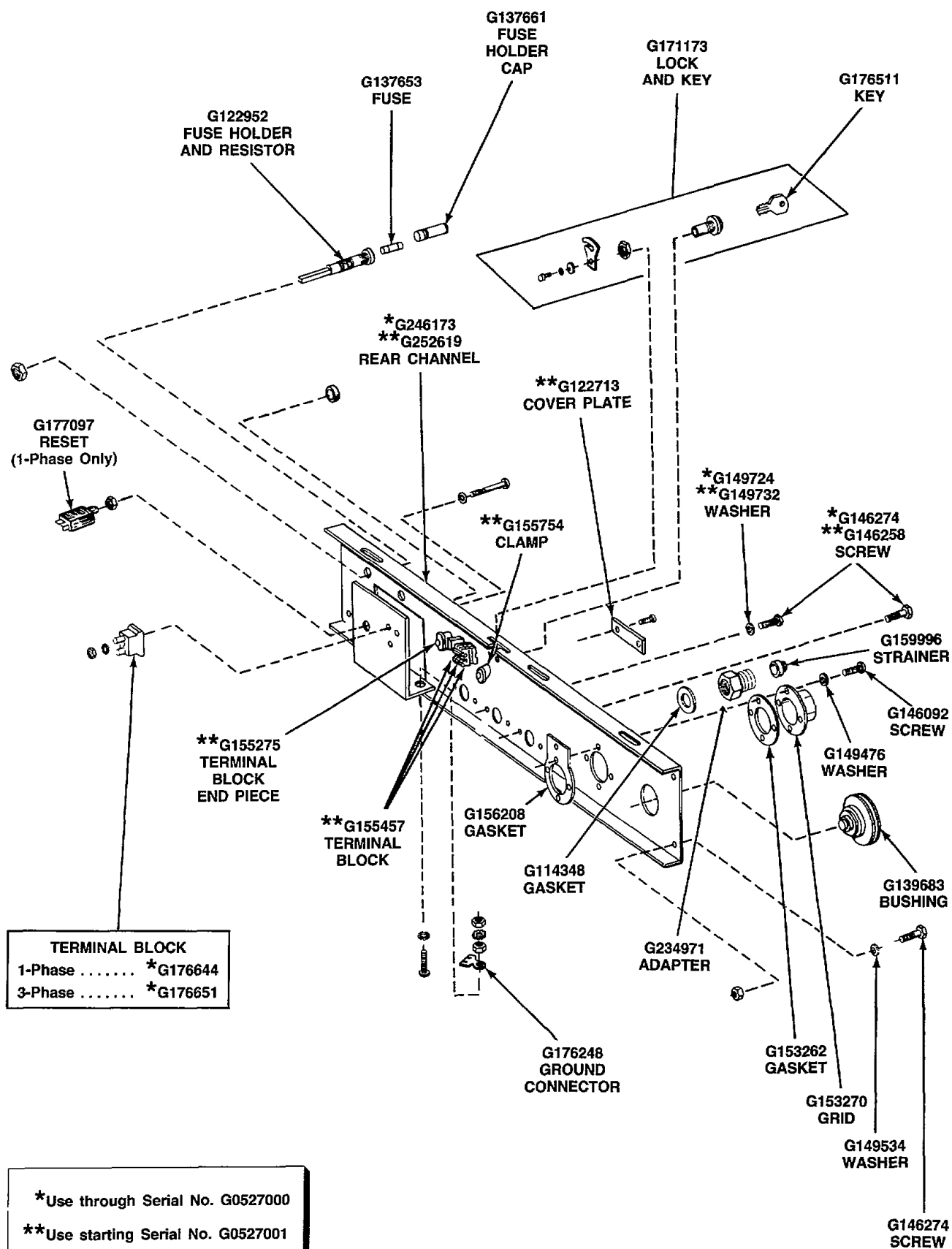
CONTROL TRAY AND CONTROLS



PROGRAM TIMER ASSEMBLY



SIPHON BREAK, INLET VALVES AND HOSES



REAR CHANNEL ASSEMBLY

G150193
NUT

G149500
WASHER

G131953
CLAMP RING
GASKET

*G205443
**G252445
DOOR

DOOR GASKET

Through Serial No. G0527000 G177725

Starting Serial No. G0527001 and
Continuing Through G0527455 G132167

Starting Serial No. G0527456 G182642

G144923
SCREW

G161430
NUT

G161455
GASKET

G149310
WASHER

G149351
WASHER

G149963
NUT

G205641
HINGE BRACKET

G161448
GASKET

*G211516
**G252411
OUTER TUB
FRONT PANEL

DOOR BRACKET
ASSEMBLY
(See Page 10 or 11
for component parts)

G146563
SCREW

G211797
CLAMP RING

CATCH

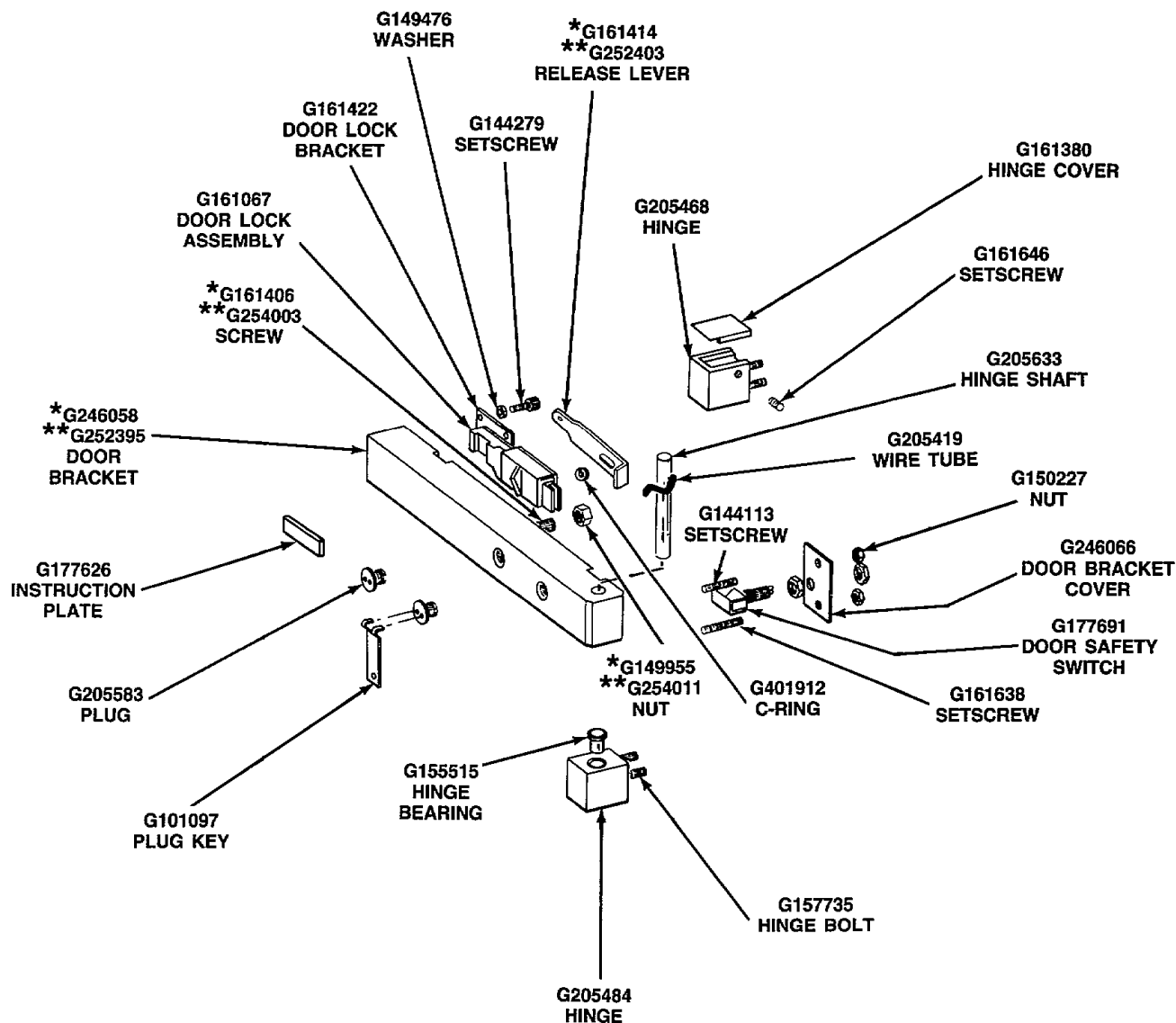
Through Serial No. G0527455 G161059

Starting Serial No. G0527456 G256214

*Use through Serial No. G0527000

**Use starting Serial No. G0527001

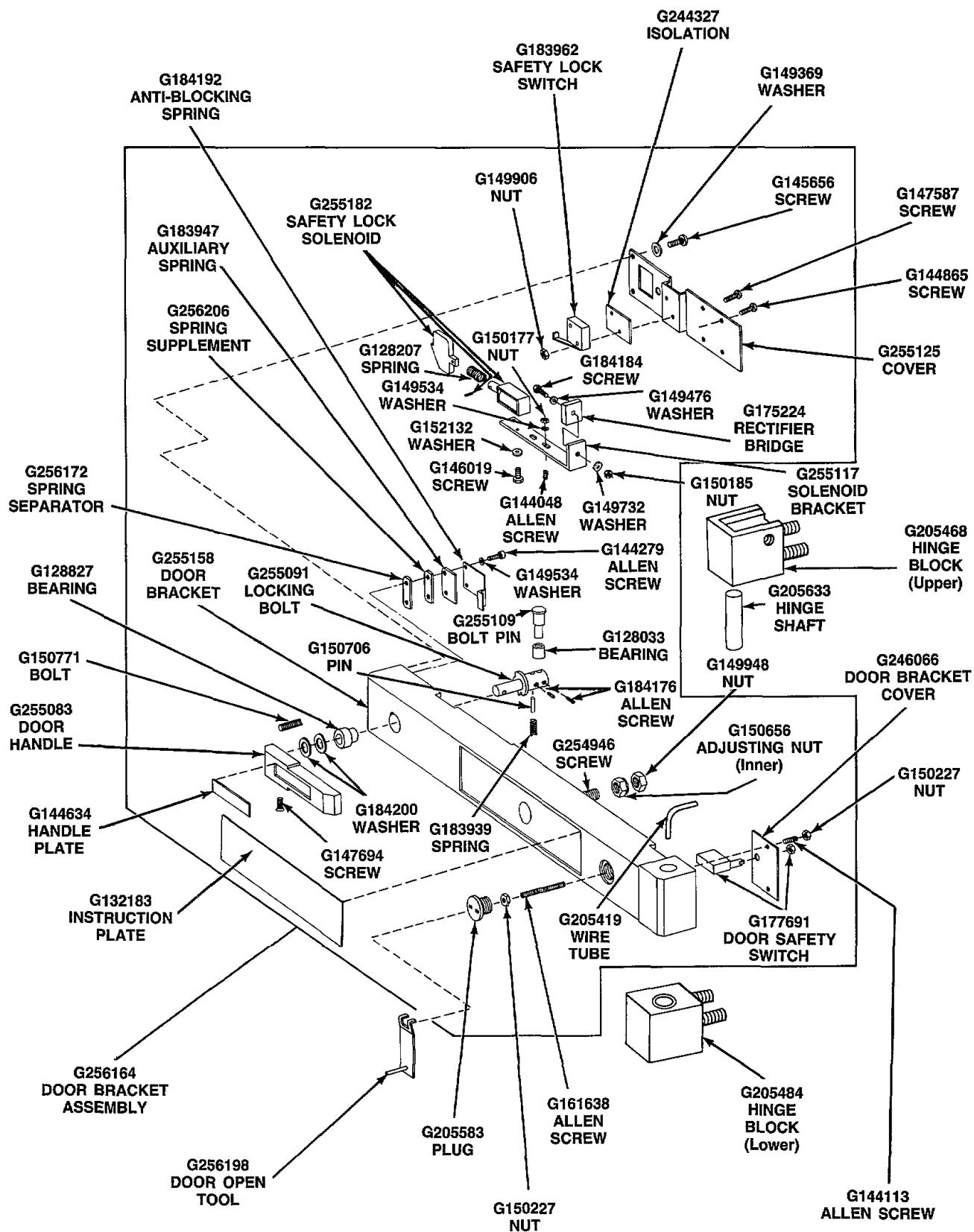
OUTER TUB FRONT PANEL AND DOOR ASSEMBLY



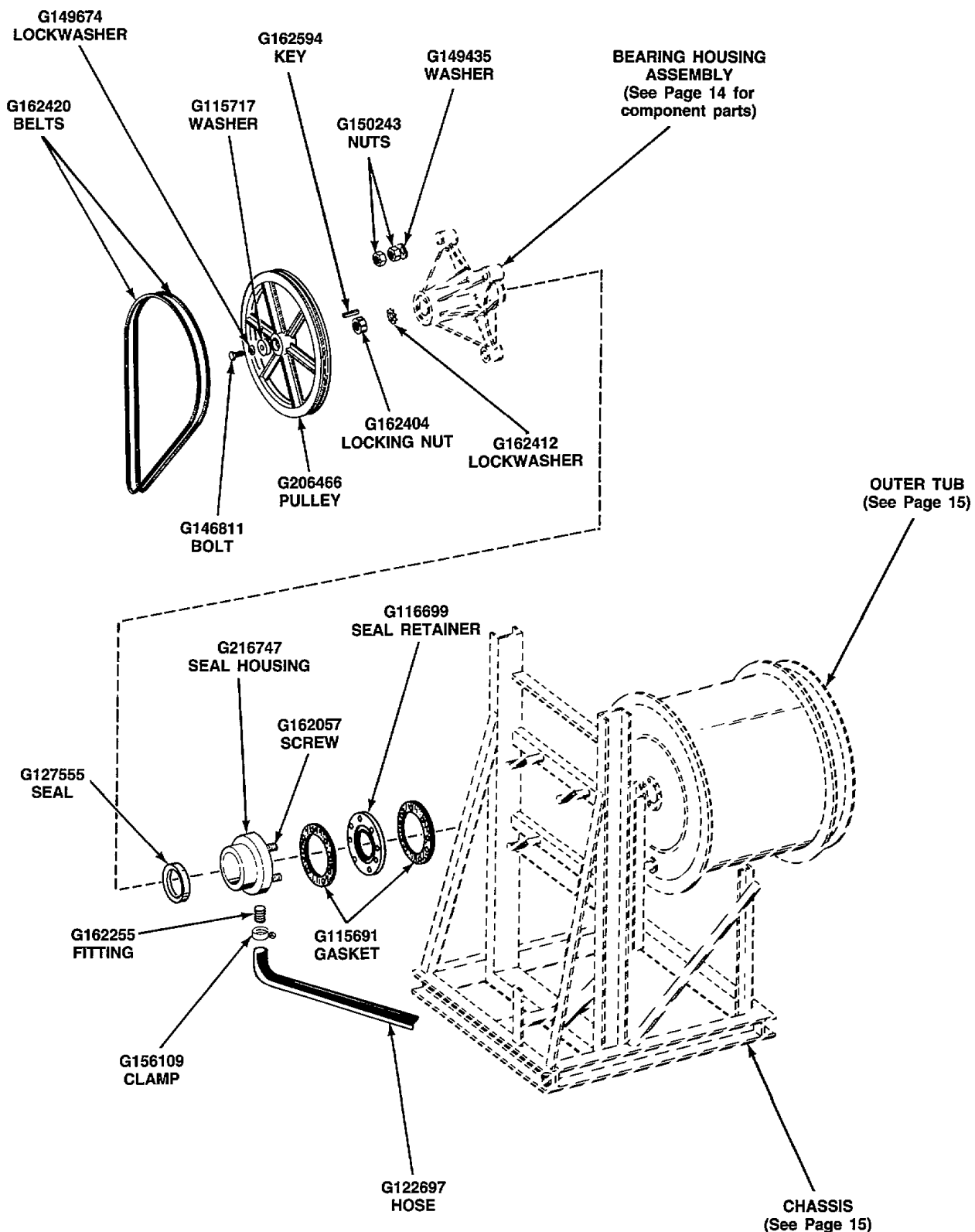
*Use through Serial No. G0527000

**Use starting Serial No. G0527001
and Continuing Through
Serial No. G0527455

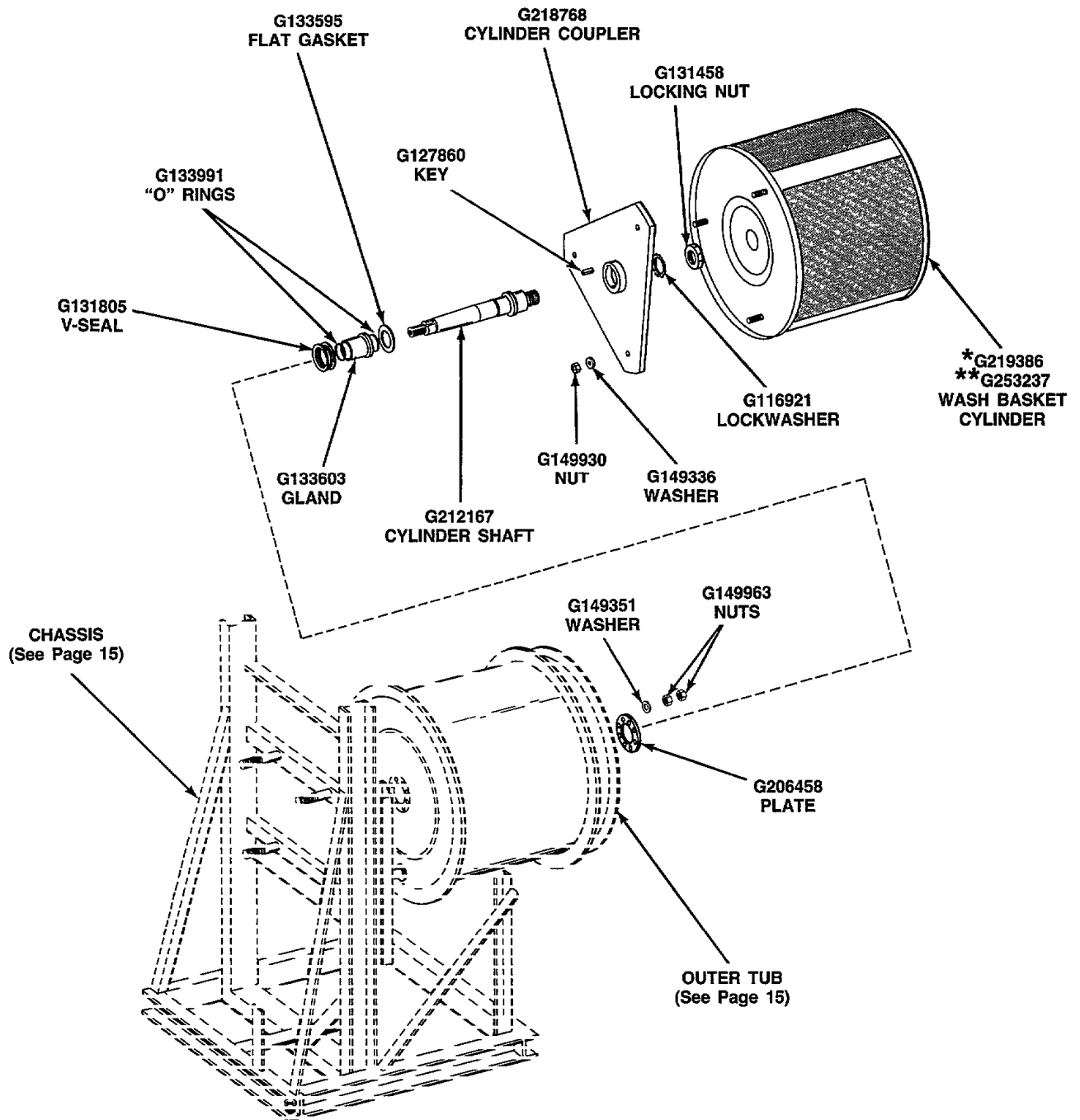
DOOR BRACKET ASSEMBLY (Through Serial No. G0527455)



DOOR BRACKET ASSEMBLY
(Starting with Serial No. G0527456)



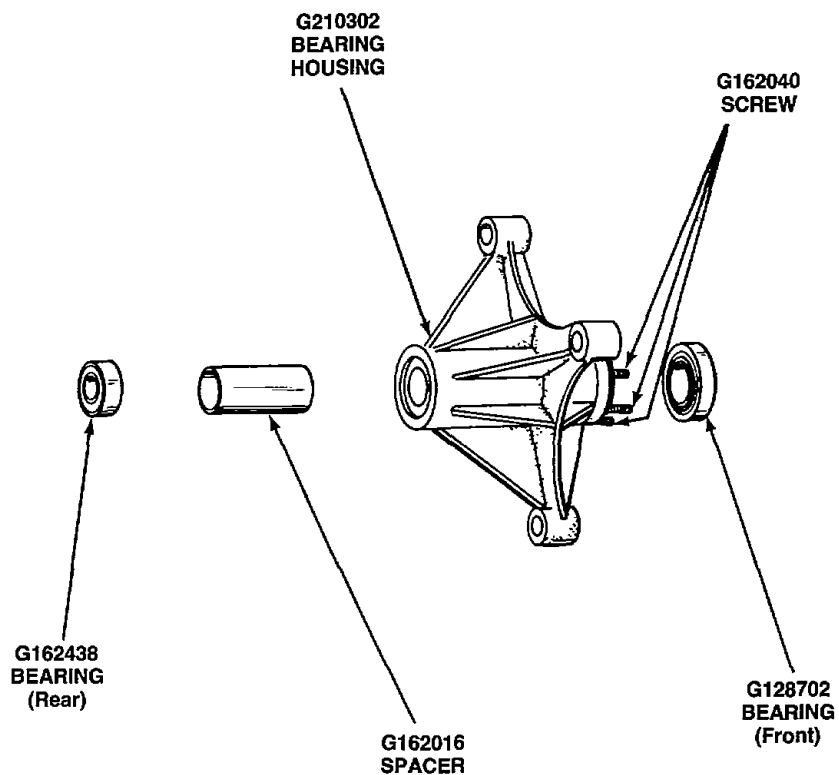
BELTS, PULLEY AND SEAL HOUSING



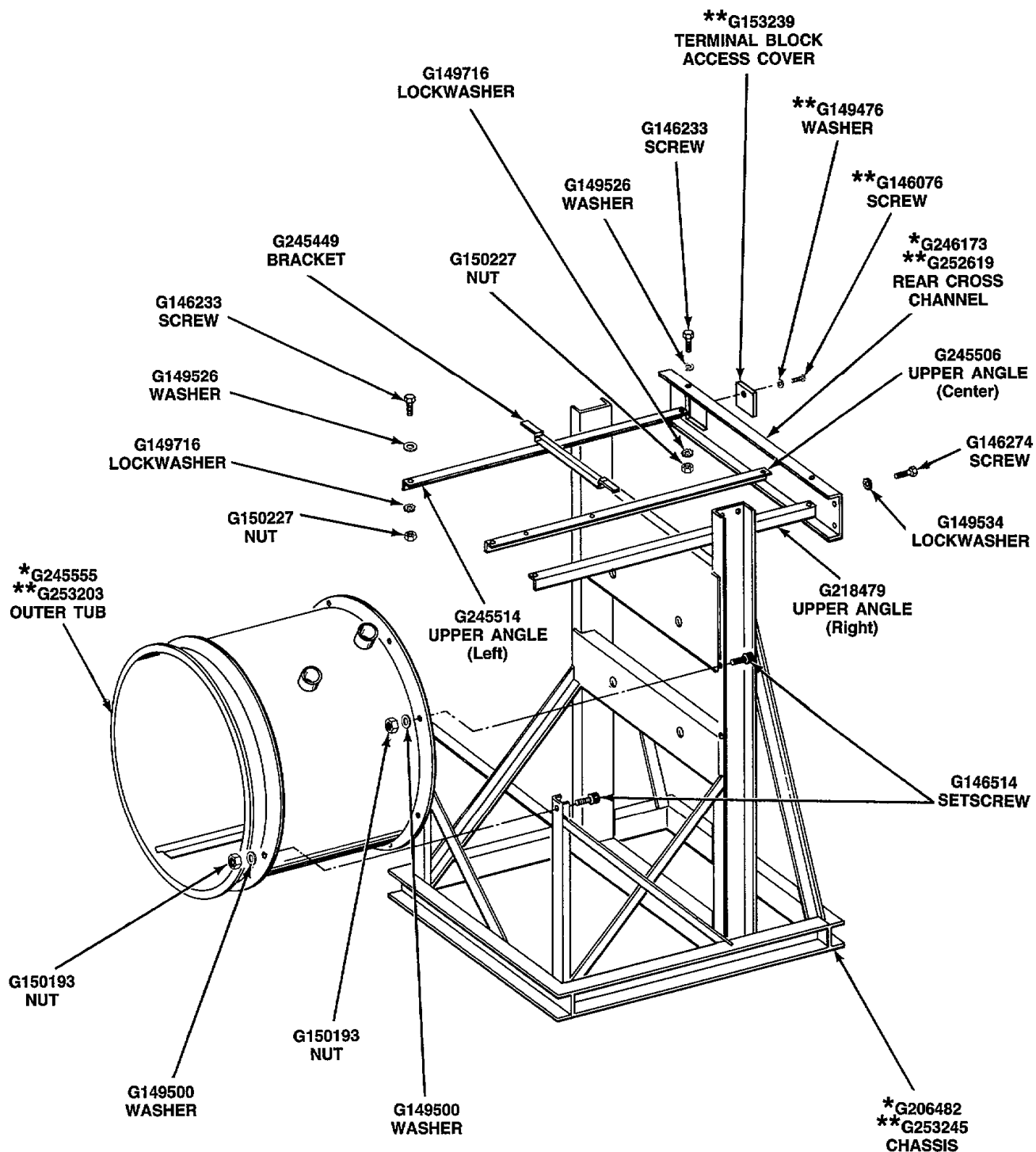
*Use through Serial No. G0527000

**Use starting Serial No. G0527001

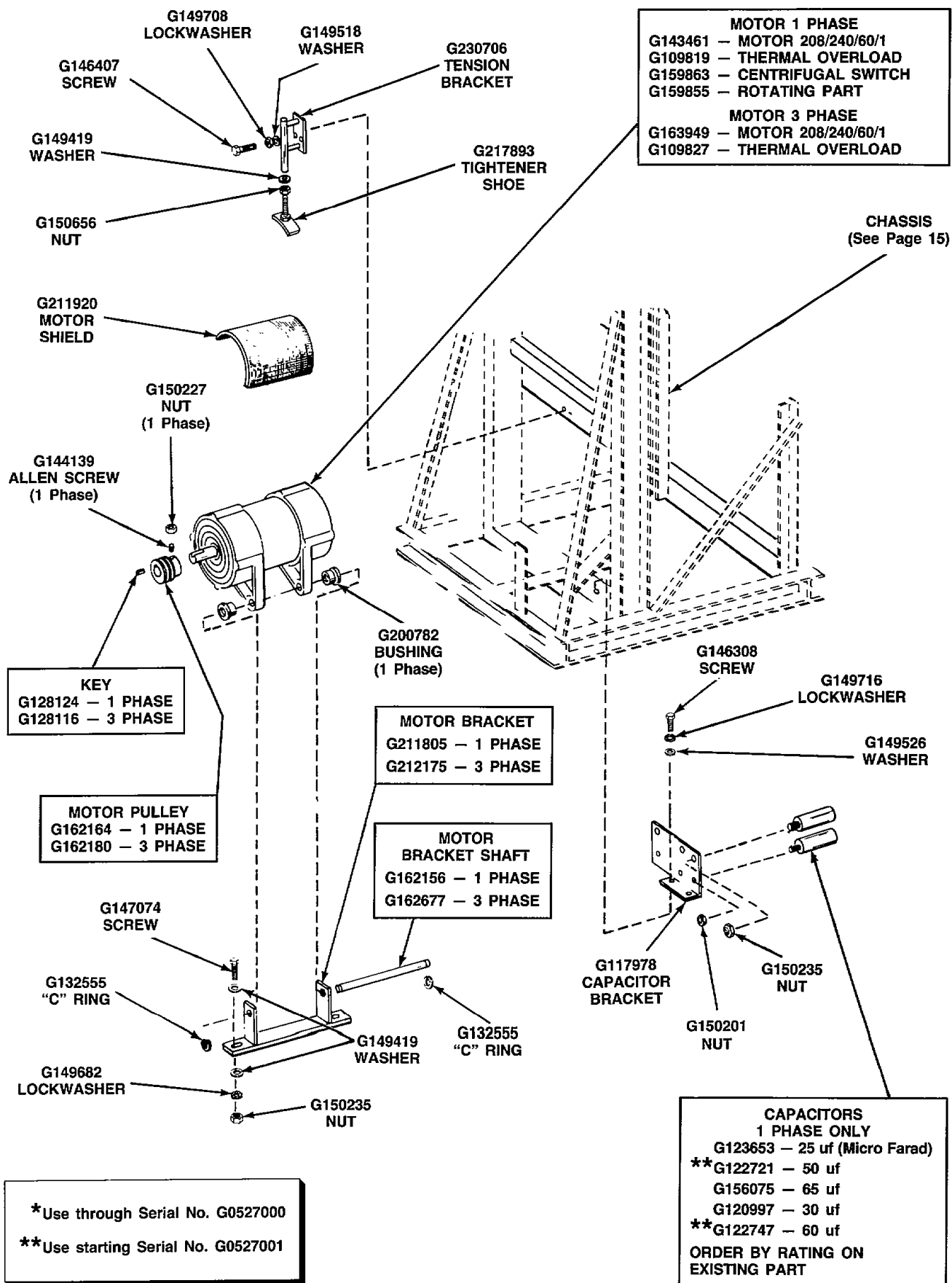
CYLINDER AND SHAFT ASSEMBLY



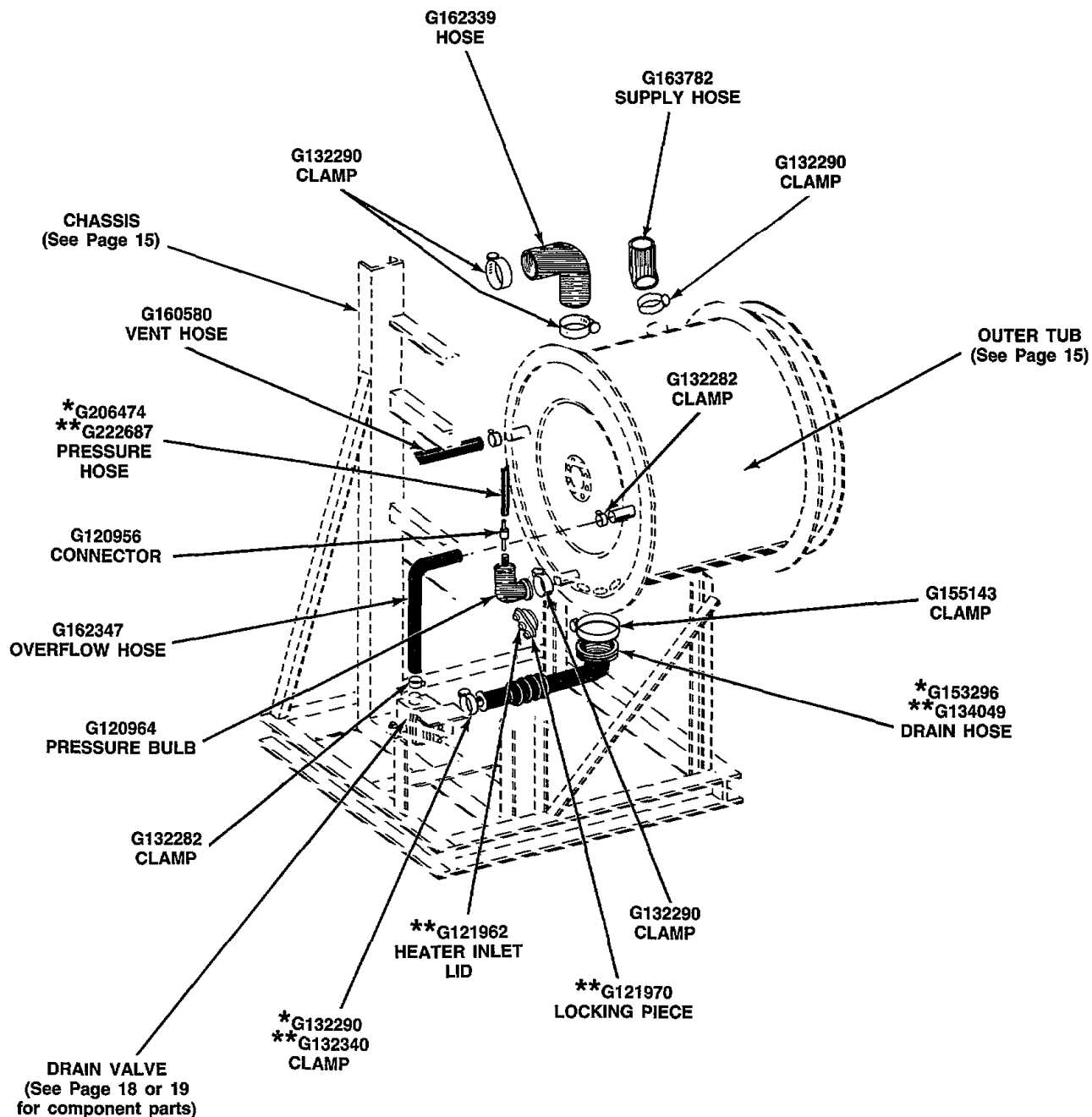
BEARING HOUSING ASSEMBLY



OUTER TUB, CHASSIS AND CONTROL FRAME ASSEMBLY



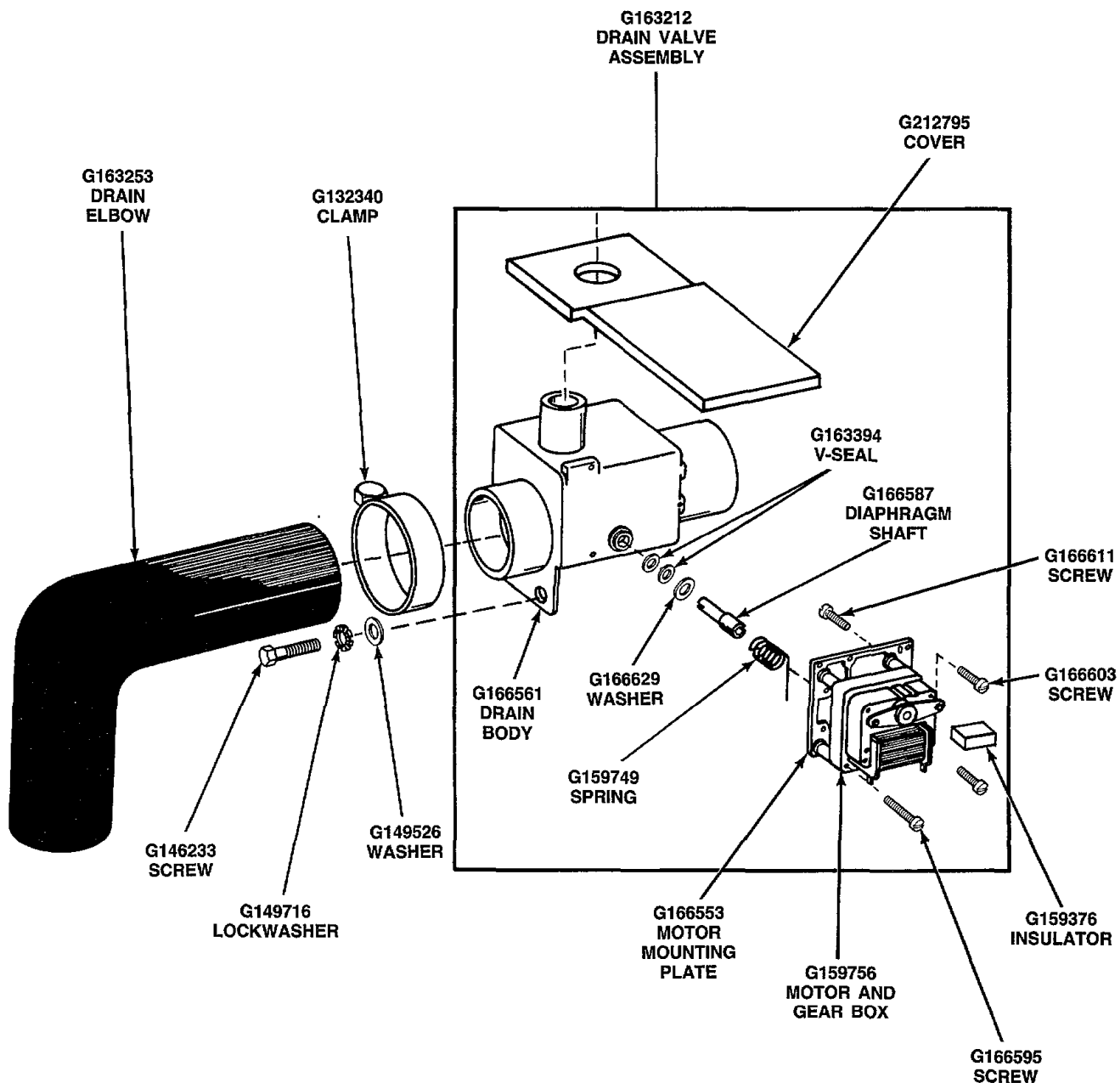
MOTOR AND CAPACITORS



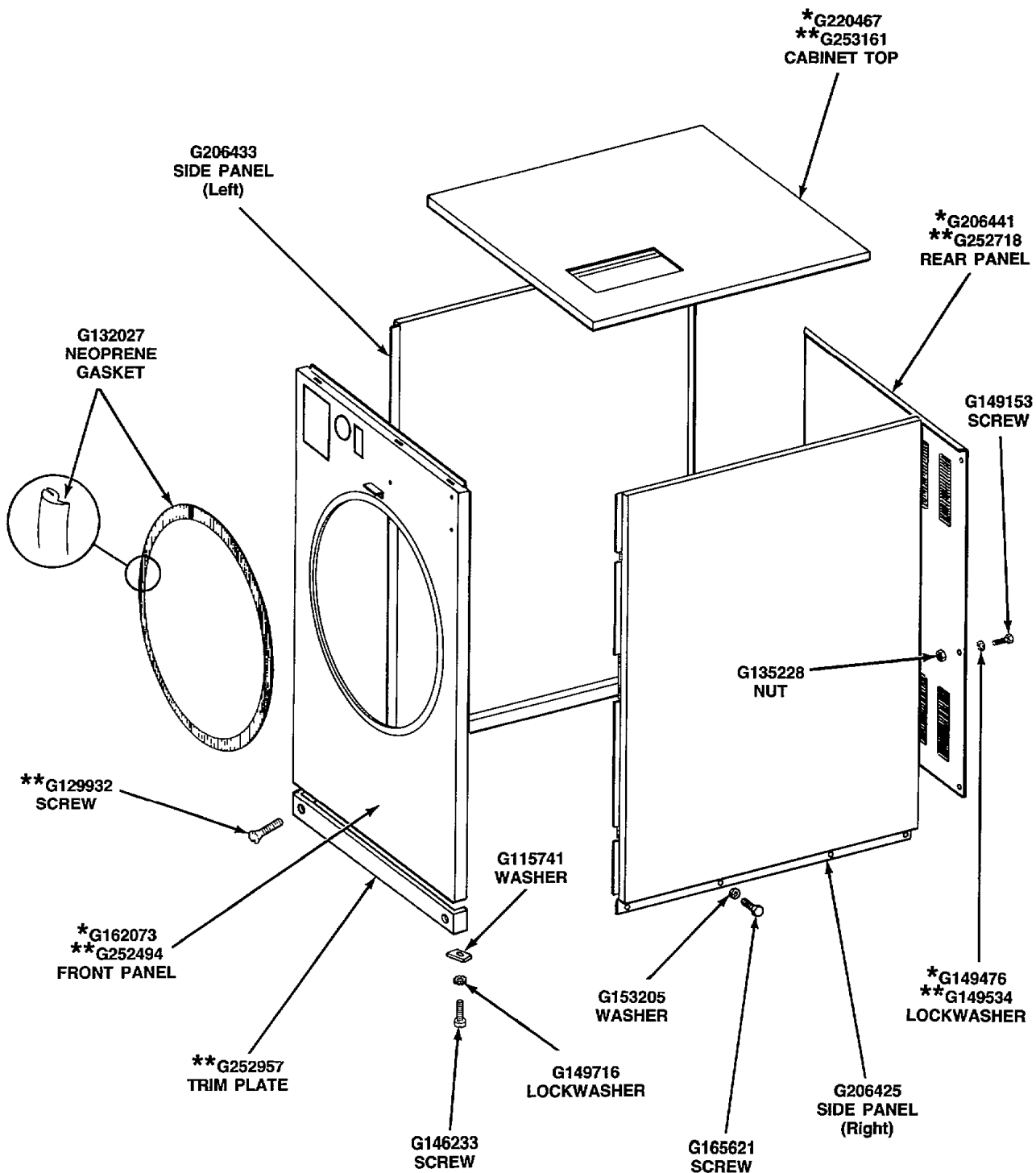
*Use through Serial No. G0527000

**Use starting Serial No. G0527001

PRESSURE HOSE, BULB, DRAIN VALVE AND HOSES

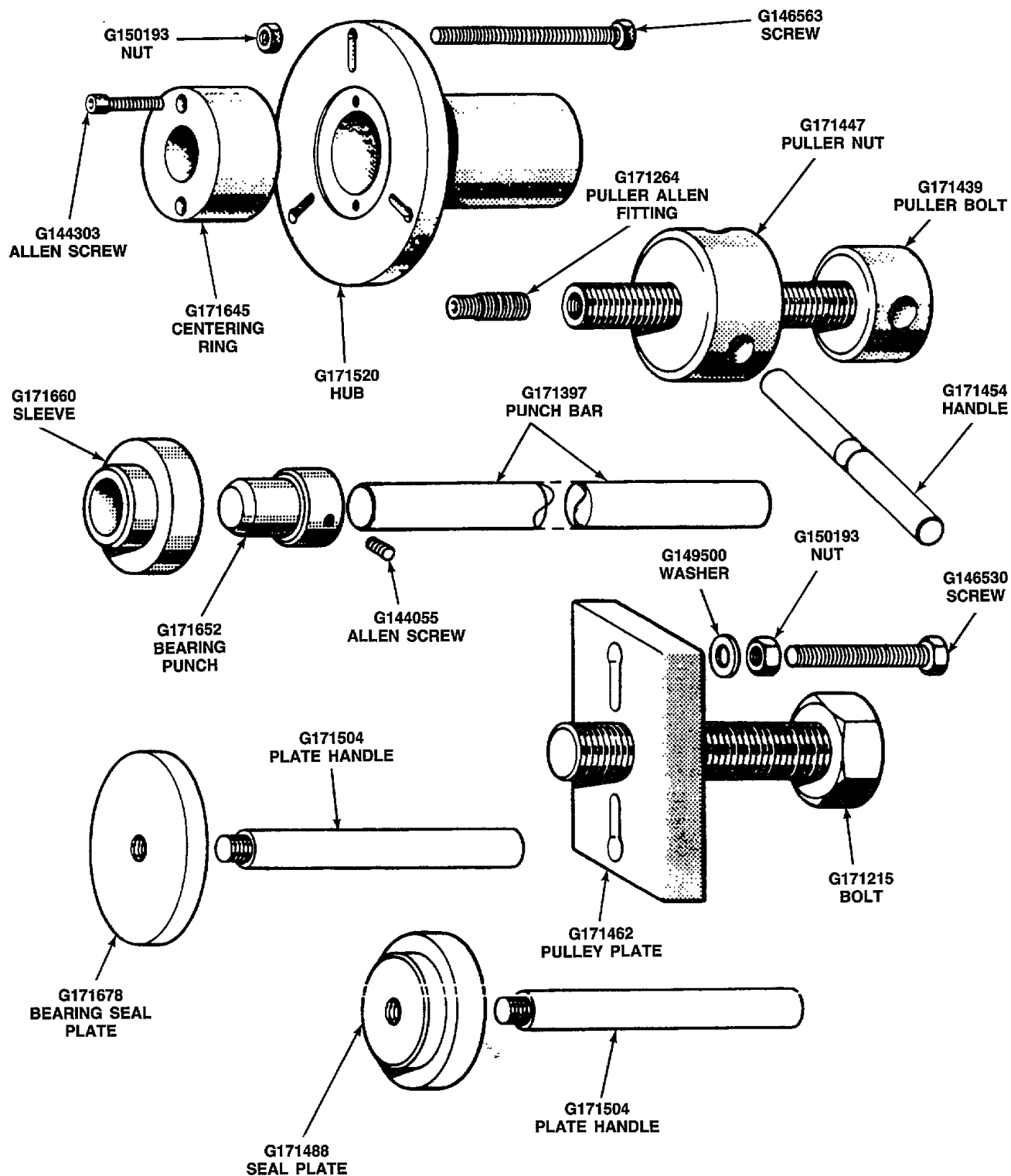


DRAIN VALVE ASSEMBLY AND DRAIN ELBOW
(Starting With Serial No. G0527001)



*Use through Serial No. G0527000
 **Use starting Serial No. G0527001

CABINET TOP, SIDE, FRONT AND REAR PANELS



261P4 TOOL KIT
For All "WX" Washers

SPECIAL TOOLS

SECTION II

Service Procedures

To aid in the servicing of the washer-extractor, refer to the parts section for the assembly sequence.

NOTE: When reference to directions (right or left) is made in this manual, it is from the operator's position facing the front of the washer.

IMPORTANT: Metric tools are required for servicing the washer.

⚠ WARNING

To reduce the risk of an electric shock, disconnect electrical power and close water supply valves before servicing the washer.

1. CABINET TOP

- Remove the two screws holding the cabinet top rear corner tabs to the rear cross channel of the washer.
- Insert key into the lock (located on the rear cross channel) and unlock.
- Lift up on the back portion of the cabinet top and slide the top forward to disengage the cabinet top from the hold-down tabs on the top flange of the front panel.
- Lift the cabinet top off the washer.

2. CONTROL PANEL

- Remove the two screws holding the cabinet top rear corner tabs to the rear cross channel of the washer.
- Insert a key into the lock (located on the rear cross channel) and unlock.
- Lift up the back portion of the cabinet top panel, slide it forward to disengage the cabinet top from the hold down tabs at the front.
- Lift the cabinet top off the washer.
- Remove the six screws holding the control panel to the cabinet.
- Pull control panel forward exposing the door open switch and run light.
- Using a Tru-Arc pliers, remove the Tru-Arc ring attaching the run light to the control panel.
Through Serial No. G052700 — Unscrew the lampholder from the white barrel of the door open switch and disconnect the wires from the door open switch.
Starting Serial No. G0527001 — Disconnect the wires from the light, then bend the tabs on the four corners of the light and push the light out through the front of the control panel.

IMPORTANT: Before disconnecting wires from switch light, mark the terminal connections and the wire numbers so the wires can be reinstalled correctly.

3. PROGRAM TIMER

- Remove the two screws holding the cabinet top rear corner tabs to the rear cross channel of the washer.
- Insert a key into the lock (located on the rear cross channel) and unlock.
- Lift up on the back portion of the cabinet top back panel, and slide it forward to disengage the cabinet top from the hold down tabs at the front.
- Lift the cabinet top off the washer.
- Remove the two screws holding the program timer mounting plate to the rear of the display window.

IMPORTANT: Mark all wire numbers and corresponding terminals on a separate piece of paper before disconnecting any wiring. If you have a problem in rewiring the timer, refer to the wiring diagram located on the underside of the cabinet top.

TIMER DIAL REMOVAL

Remove the setscrew holding the timer dial to the timer shaft and remove the timer dial.

TIMER MOUNTING PLATE REMOVAL

Remove the two screws holding the timer mounting plate to the front of the timer.

4. CYCLE SWITCHES

- Remove the two screws holding the cabinet top rear corner tabs to the rear cross channel of the washer.
- Insert a key into the lock (located on the rear cross channel) and unlock.
- Lift up the back portion of the cabinet top back panel, and slide it forward to disengage the cabinet top from the hold down tabs at the front.
- Lift the cabinet top off the washer.
- Remove the two screws holding the selector switch assembly to the U-bracket mounted to the backside of the front panel.

- f. Loosen the bottom screws holding the selector switch assembly to the lower bracket. Do not remove the bottom screw. We recommend that before sliding the switch assembly up, bend it slightly to the rear so that the buttons clear the front panel and the assembly can be pulled up and out of the washer.

IMPORTANT: When replacing the switch assembly, do a wire-for-wire exchange, or write down all of the wire terminal connections before removing any wires. If you have a problem, refer to the wiring diagram on the underside of the cabinet top.

NOTE: When reinstalling the switch, be sure that the screw head and washer are behind the bottom of the switch plate assembly. The switch must be aligned through the panel before putting the screw back in and tightened.

5. PRESSURE SWITCH

- a. Remove the two screws holding the cabinet top rear corner tabs to the rear cross channel of the washer.
- b. Insert key into the lock (located on the rear cross channel) and unlock.
- c. Lift up on the back portion of the cabinet top and slide the top forward to disengage the cabinet top from the hold down tabs on the top flange of the front panel.
- d. Lift the cabinet top off the washer.
- e. Remove the screw and washer holding the pressure switch to rear tab on control mounting tray.
- f. Disconnect the pressure hose from the pressure switch.

IMPORTANT: Before disconnecting wires from the pressure switch, write down the switch terminal connections and the wire numbers so the switch can be rewired correctly.

- g. Tape pressure hose to top side of outer tub to prevent hose from falling to washer base.

IMPORTANT: When installing the pressure hose, blow air through the pressure hose before connecting the hose to the pressure switch to remove any condensation that may have accumulated in the hose.

6. CONTACTORS (Wash or Spin)

- a. Remove the two screws holding the cabinet top rear corner tabs to the rear cross channel of the washer.
- b. Insert key into lock (located on the rear cross channel) and unlock.

- c. Lift up on the back portion of the cabinet top and slide the top forward to disengage the cabinet top from the hold down tabs on the top flange of the front panel.
- d. Lift the cabinet top off the washer.
- e. Use a small flat blade screwdriver and move the side tab out (located on left side of the contactor) and carefully remove contactor off rail.
- f. Disconnect wires from contactor.

IMPORTANT: Before removing wires from contactor, mark the terminal contactors and the wire number so the wires can be reinstalled correctly.

7. INLET VALVE (Hot Water-Two Track Valve)

NOTE: Turn off water supply to the washer-extractor.

- a. Remove the two screws holding the cabinet top rear corner tabs to the rear cross channel of the washer.
- b. Insert key into lock (located on the rear cross channel) and unlock.
- c. Lift up on the rear portion of the cabinet top, slide top forward to disengage the cabinet top from the hold-down tabs located on top flange of front panel.
- d. Remove the cabinet top.
- e. Remove the hot water inlet hose from the brass adapter at the rear of the washer.
- f. Remove the brass adapter from the hot water inlet valve.

IMPORTANT: Before removing wires from solenoids, mark the terminal connections and the wire number so the wires can be reinstalled correctly.

- g. Mark the internal hoses so they can be reinstalled on the correct valve outlet.
- h. Loosen hose clamps and remove the hoses from the valve.
- i. Remove screws holding inlet valve to the rear cross channel and remove valve from inside of washer.

SOLENOID REMOVAL (Through Serial No. G0527000)

- a. Loosen the five screws holding solenoids and mounting plate to inlet valve body. DO NOT remove the screws.
- b. Push coils toward rear of mounting plate and lift up. Coils will come off plunger assembly.

DIAPHRAGM REMOVAL (Through Serial No. G0527000)

- a. Remove the five screws holding solenoids and mounting plate to inlet valve body.
- b. Lift solenoids and mounting plate off the valve body.

(continued)

- c. Remove the armature and guide from valve body, then remove diaphragm from valve body.

8. INLET VALVE (Cold Water-Single Track Valve)

Note: Turn off the water supply to the washer.

- a. Remove the two screws holding the cabinet top rear corner tabs to the rear cross channel of the washer.
- b. Insert key into lock (located on the rear channel) and unlock.
- c. Lift rear portion of cabinet top, slide top forward to disengage the cabinet top from the hold-down tabs on the top flange of the front panel.
- d. Lift the cabinet top off the washer.
- e. Remove the cold water inlet hose from the brass adapter at the rear of the washer.
- f. Remove the brass adapter from the inlet valve.

IMPORTANT: Before removing wires from solenoid, mark the terminal connection and the wire number so the wires can be reinstalled correctly.

- g. Remove the ground wire from the inlet valve.

▲ CAUTION

Whenever ground wires are removed during servicing, those ground wires must be reconnected to insure the washer is properly grounded.

SOLENOID REMOVAL (Through Serial No. G0527000)

- a. Loosen the five screws holding solenoids and mounting plate to inlet valve body. DO NOT remove the screws.
- b. Push coils toward rear of mounting plate and lift up. Coils will come off plunger assembly.

DIAPHRAGM REMOVAL (Through Serial No. G0527000)

- a. Remove the five screws holding solenoids and mounting plate to inlet valve body.
- b. Lift solenoids and mounting plate off the valve body.
- c. Remove the armature and guide from valve body, then remove diaphragm from valve body.

9. DISPENSER

- a. Remove the two screws holding the cabinet top rear corner tabs to the rear cross channel of the washer.
- b. Insert key into lock (located on the rear cross channel) and unlock.
- c. Lift up on the back portion of the cabinet top, slide top forward to disengage the cabinet top from the hold-down located on top flange of the front panel.
- d. Lift the cabinet top off the washer.
- e. Loosen the clamps holding the hoses to the dispenser and remove the dispenser.

NOTE: Mark all hoses and their appropriate connection so they can be reinstalled correctly. When reinstalling hoses to the dispenser, DO NOT overtighten the hose clamps. If you do, water will shoot out of the dispenser lid.

10. DOOR OPEN SWITCH (Through Serial No. G0527455)

- a. Remove the two screws holding the cabinet top rear corner tabs to the rear cross channel of the washer.
- b. Insert key into lock (located on the rear cross channel) and unlock.
- c. Lift up on the back portion of the cabinet top and slide the top forward to disengage the cabinet top from the hold down tabs on the top flange of the front panel.
- d. Lift the cabinet top off the washer.
- e. Disconnect wires from door open switch.

NOTE: Before removing wires from the door open switch, mark the terminal connection and the wire number so the wires can be reinstalled correctly.

- f. Unscrew the lampholder nut from the inside of the control panel and remove the door open switch.

11. RUN LIGHT

- a. Remove the two screws holding the cabinet top rear corner tabs to the rear cross channel of the washer.
- b. Insert key into lock (located on the rear cross channel) and unlock.
- c. Lift up on the back portion of the cabinet top and slide the top forward to disengage the cabinet top from the hold down tabs on the top flange of the front panel.
- d. Lift the cabinet top off the washer.
- e. Remove the six screws holding the control panel to the cabinet.
- f. Disconnect wires from the run light.

NOTE: Before removing wires from the run light, mark the terminal connection and the wire number so the wires can be reinstalled correctly.

- g. Using a Tru-Arc pliers, remove the Tru-Arc ring holding the run light to the control panel.

12. SIPHON BREAK

- a. Remove the two screws holding the cabinet top rear corner tabs to the rear cross channel of the washer.
- b. Insert key into lock (located on the rear cross channel) and unlock.
- c. Lift up on the back portion of the cabinet top and slide the top forward to disengage the cabinet top from the hold down tabs on the top flange of the front panel.
- d. Lift the cabinet top off the washer.

NOTE: Label all hoses and their appropriate nipple on the siphon break before removing the hoses.

- e. Loosen hose clamps and carefully remove all hoses from the siphon break.

IMPORTANT: Use a hair dryer or similar heating device to heat the ends of the hoses where they attach to the siphon break. This will help loosen the hoses and prevent the nipples on the siphon break from breaking off when the hoses are removed.

Pull hoses straight off the nipples. If you do not, the nipples may break off the siphon break.

- f. Remove the four screws attaching the grid and gasket to the rear channel and remove the grid and gasket.
- g. Remove the screw holding the siphon break to the rear channel and remove the siphon break and gasket from the rear channel.

13. RESET — SINGLE PHASE UNITS ONLY

- a. Remove the two screws holding the cabinet top rear corner tabs to the rear cross channel of the washer.
- b. Insert key into lock (located on the rear cross channel) and unlock.
- c. Lift up on the back portion of the cabinet top and slide the top forward to disengage the cabinet top from the hold down tabs on the top flange of the front panel.
- d. Lift the cabinet top off the washer.
- e. Disconnect the wires to the reset.

NOTE: Before removing wires from the reset, mark the terminal connections and the wire numbers so the wires can be reinstalled correctly.

- f. Turn the nut off the reset and pull the reset out through the top.

14. LOADING DOOR

a. Through Serial No. G0527455 —

Unscrew the two round plugs from the door bracket using the special emergency door opening tool supplied with the washer. Place your finger inside the left hole and remove the slide bar mechanism to the right to unlock the door.

Starting Serial No. G0527456 — Use the special door open tool (supplied with washer) and unlock the door by pushing the pin on the tool up through the hole in the bottom side of the door bracket, and at the same time, move the door handle down to unlock the door.

Unscrew the round plug from the front of the door bracket using the special plug key (supplied with the washer).

- b. Loosen the locknut on the setscrew (located inside the hole in the door bracket) and remove the setscrew.
- c. Remove the large nut holding the door to the door bracket. Thread the complete door assembly off the large bolt on the door bracket.

15. DOOR LOCK ASSEMBLY OR SAFETY LOCK COIL AND BRACKET

a. Through Serial No. G0527455 —

Unscrew the two round plugs from the door bracket using the special emergency door opening tool supplied with the washer. Place your finger inside the left hole and remove the slide bar mechanism to the right to unlock the door.

Starting Serial No. G0527456 — Use the special door open tool (supplied with washer) and unlock the door by pushing the pin on the tool up through the hole in the bottom side of the door bracket, and at the same time, move the door handle down to unlock the door.

Unscrew the round plug from the front of the door bracket using the special plug key (supplied with the washer).

- b. Loosen the locknut on the setscrew (located inside the hole in the door bracket) and remove the setscrew.
- c. Remove the large nut holding the door to the door bracket. Thread the complete door assembly off the large bolt on the door bracket.

(continued)

d. **Through Serial No. G0527455 —**

Remove the "C" ring holding the slide bar mechanism to the center bolt on the door bracket.

Remove the four screws holding the door lock assembly to the door bracket.

Remove the slide bar mechanism.

Remove two screws holding the door lock assembly to the door bracket.

Starting Serial No. G0527456 —

Remove the six screws holding the safety lock coil and mounting bracket to the door bracket.

- e. Disconnect wires from the door mechanism.

IMPORTANT: Before disconnecting the wires from the door mechanism, write down the terminal connections and the wire number so the door mechanism can be rewired correctly.

16. DOOR SAFETY SWITCH

a. **Through Serial No. G0527455 —**

Unscrew the left round plug from the door bracket using the special plug key supplied with the washer.

Place your finger inside the hole and move the slide bar mechanism to the right to unlock the door.

Starting Serial No. G0527456 — Use the special door open tool (supplied with washer) and unlock the door by pushing the pin on the tool up through the hole in the bottom side of the door bracket, and at the same time, move the door handle down to unlock the door.

Unscrew the round plug from the front of the door bracket using the special plug key (supplied with the washer).

- b. Remove the two small nuts holding the door safety switch and plate to the door bracket.
c. Pull switch and plate out of door bracket far enough to permit disconnecting of wires from switch terminals.

IMPORTANT: Before disconnecting wires from switch terminals, write down the switch terminal connections and the wire numbers so switch can be rewired correctly.

- d. Remove the large nut holding the door safety switch to the switch plate.

17. DOOR GASKET

- a. Peel the old door gasket from the door frame channel.

NOTE: If the old gasket was adhered to the door frame, it will require scraping of the old adhesive before installing the new door gasket. Clean and dry the door frame channel.

- b. Apply a bead ($\frac{1}{8}$ " diameter) of a good quality water and temperature resistant silicone sealer (RTV) to the door frame gasket channel.

DOOR GASKET INSTALLATION

- c. **No. G177725 Door Gasket —** Locate the split in the outer edge of the new gasket. Place the narrow lip into the door frame channel and push the gasket into position. Use a screwdriver or similar tool to reach through the split in the gasket. Use the tool to seat gasket into the channel and seal all the way around. Seat the thicker lip of the gasket into the channel.

IMPORTANT: When installing the door gasket, the seam MUST be positioned in either the three o'clock or nine o'clock position. If it is not in either of these positions the gasket will leak.

No. G182642 Door Gasket — Turn the new door gasket one quarter turn so the wide part of the gasket is facing you. Carefully tuck the new door gasket into the door frame channel.

IMPORTANT: When installing the door gasket, the seam MUST be positioned at twelve o'clock. If it is not in this position, the gasket will leak.

18. OUTER TUB FRONT PANEL

- a. Remove the two screws holding the cabinet top rear corner tabs to the rear cross channel of the washer.
b. Insert key into the lock (located on the rear cross channel) and unlock.
c. Lift up on the back portion of the cabinet top and slide the top forward to disengage the cabinet top from the hold down tabs on the top flange of the front panel.
d. Lift the cabinet top off the washer.
e. Disconnect the four wires from the door lock assembly to the terminal block. Wire connection from the right to the left is "L1" first position, "55" second position, "207" third position and "56" fourth position.
f. Disconnect the green ground wire from the control panel plate.

⚠ CAUTION

Whenever ground wires are removed during servicing, those ground wires must be reconnected to insure the washer is properly grounded.

- g. Remove the two screws holding the nameplate cover to the front of the washer and remove the nameplate cover.
- h. With nameplate removed, mark door panel at a position on the front panel to assist with installation of door panel.
- i. Pull the door lock wires out through the opening in the front panel.
- j. Remove the bolt, washers and nut holding the clamp ring to the front of the washer and remove the clamp ring.
- k. While supporting the outer tub front panel and door assembly, carefully remove the gasket.
- l. Carefully remove the outer tub front panel and door assembly from the washer.

IMPORTANT: When reinstalling outer tub front panel and loading door, line up the two panels where they were marked during disassembly, see step "h", or use a tape measure to measure the distance from the top of the door arm to the top of the control panel. With the door arm horizontal to the control panel, the distance should be 22 inches from the top of each end of the door arm to the top of the control panel.

IMPORTANT: Reinstallation of the outer tub front panel **MUST** be done with two people.

- a. Position and support the outer tub front panel (with door attached) to the front of the outer tub. Use spacers approximately the same thickness as the center rib of the clamp ring gasket. Place spacers at the 4 o'clock and 8 o'clock positions between the outer tub lip and the outer tub front panel. Clamp into position using clamping pliers.

Starting at the 12 o'clock position, install the clamp ring gasket. The gasket has two grooves, one groove goes over the outer tub lip and the other goes over the outer tub front panel lip. After installing approximately six inches of gasket, clamp the gasket, outer tub and outer tub front panel with a clamping pliers at the starting point. Continue to install the gasket until you are at the clamping pliers and spacer near the 4 o'clock position. Once again clamp the gasket, outer tub and outer tub front panel with a clamping pliers before removing clamping pliers and spacer at the 4 o'clock position. Proceed in this manner until the gasket is completely installed.

While one person holds the outer tub front panel in position, the second person can remove the clamping pliers and install the clamp ring.

- b. With the gasket in place, start at the top and place the clamp ring around the clamp ring gasket. The tabs on the clamp ring should be one quarter of the way into the bracket on the front panel. Do not tighten the clamp ring at this time.

- c. With the door assembly lined up correctly (22 inch measurement), begin tapping the clamp ring with a rubber or vinyl mallet all the way around to pull the two sides of the clamp together.
Begin tightening the clamp ring using the bolt, washers and nut. Continue to tap around the outer edge of the clamp ring as the bolt is being tightened to insure a water tight seal.
- e. Route the four wires and the ground wire from the door switch mechanism through the hole in the front panel and up into the control tray.

NOTE: Be sure the insulating tube is in the hole in the front panel to protect the wires.

- f. Reconnect the wires to the terminal block.

NOTE: Wire connection from the right to the left is "L1" first position, "55" second position, "207" third position and "56" fourth position.

- g. Attach the nameplate housing to the washer with the two screws.
- h. Place the cabinet top onto the washer and lock it into position. Reinstall the screws into each of the rear corner tabs.

19. FRONT PANEL

- a. Remove the two screws holding the cabinet top rear corner tabs to the rear cross channel of the washer.
- b. Insert key into the lock (located on the rear cross channel) and unlock.
- c. Lift up on the back portion of the cabinet top and slide the top forward to disengage the cabinet top from the hold down tabs on the top flange of the front panel.
- d. Lift the cabinet top off the washer.
- e. Remove the six screws holding the control panel to the cabinet.
- f. Pull control panel forward exposing the door open switch and run light.
- g. Using a Tru-Arc pliers, remove the Tru-Arc ring holding the run light to the control panel.
- h. **Through Serial No. G0527455** — Turn the plastic nut off the white barrel of the door open switch and disconnect the four wires.
Starting Serial No. G0527456 — Disconnect the wires from the light, then bend the tabs on the four corners of the light and push the light out through the front of the control panel.

NOTE: Before removing wires from the switch and light, mark the terminal connections and the wire numbers so the wires can be reinstalled correctly.

- i. Remove screws, lockwashers and nuts holding bottom edge of front panel to chassis and remove the front panel.

20. REAR PANEL

- a. Remove screws holding the rear panel to the cabinet and remove the rear panel.

IMPORTANT: The rear panel **MUST** be installed before operating the washer. The rear panel keeps dust and dirt from accumulating on the motor and adds rigidity to the structure of the washer, and provides safety protection.

21. BELTS

- a. Remove screws holding the rear panel to the cabinet and remove the rear panel.
- b. Use a piece of two-by-four or something similar for leverage to lift the motor while running the belts off the pulley. Once the belts have been removed from the pulley, lower the motor gradually. **DO NOT** let it drop or you could damage the motor.

22. CYLINDER PULLEY ASSEMBLY

- a. Remove screws holding rear panel to cabinet and remove rear panel.
- b. Use a piece of two-by-four or something similar for leverage to lift the motor while running the belt off the pulley. Once the belt has been removed from the pulley, lower the motor gradually. **DO NOT** let it drop or you could damage the motor.

NOTE: Block cylinder at front of washer to keep the cylinder from rotating when removing pulley bolt and pulley.

- c. Using a 22mm socket, remove the large bolt holding the pulley to the cylinder shaft and remove the lockwasher and washer.
- d. With the No. G171215 Bolt screwed into the No. G171462 Pulley Plate, attach the pulley plate to the tapped holes in the pulley hub with two bolts, No. G146530, washers, No. G149500, and nuts No. G150193. The washers, No. G149500, go between the nut and the pulley plate (see *Page 21*). Use an 18mm wrench to turn the nuts tight against the pulley plate.
- e. Turn the large bolt **clockwise** to pull the pulley off the shaft.

PULLEY INSTALLATION

- a. Insert the No. G171264 Puller Allen Fitting into the No. G171439 Puller Bolt approximately one inch.

NOTE: Install the puller allen fitting into the puller bolt with the allen hex end extending out from the puller bolt.

- b. Insert the pulley key onto the shaft and start the pulley onto the shaft with a hammer.
- c. Screw the No. G171439 Puller Bolt, with the G171264 Puller Allen Fitting, into the cylinder shaft.
- d. Insert the No. G171454 Handle into the No. G171447 Puller Nut and turn the drive nut **clockwise** to push the pulley on the shaft.
- e. When the pulley is seated firmly on the shaft, install the large washer, lockwasher and bolt into the shaft and tighten firmly.

23. WASH BASKET CYLINDER AND SHAFT REMOVAL

- a. Remove the two screws holding the cabinet top rear corner tabs to the rear cross channel of the washer.
- b. Insert key into the lock (located on the rear cross channel) and unlock.
- c. Lift up on the back portion of the cabinet top and slide the top forward to disengage the cabinet top from the hold down tabs on the top flange of the front panel.
- d. Lift the cabinet top off the washer.
- e. Remove the outer tub front panel, with door attached, *paragraph 18*.
- f. Remove screws holding rear panel to cabinet and remove panel.
- g. Remove belts and cylinder pulley, *paragraphs 21 and 22*.
- h. Remove key, locknut and lockwasher from shaft.
- i. Attach No. G171645 Centering Ring to No. G171520 Hub with No. G144303 Allen Screws.
- j. Turn the No. G150193 Nuts onto the three No. G146563 Screws and attach the hub (with the centering ring attached) to the bearing housing. Once the bolts are tight, turn the No. G150193 Nuts tight against the hub (see *Page 21*).
- k. Thread the No. G171215 Bolt into the housing through the hub and centering ring.

NOTE: Block the cylinder at front of washer to keep it from rotating.

- l. Turn the bolt **clockwise** to push the cylinder and shaft out through the front of the washer. Carefully remove the cylinder and shaft assembly from the washer.

CYLINDER AND SHAFT DISASSEMBLY

- a. Remove the gland from the shaft.
- b. Remove the V-seal from the outside of the gland, and remove the O-rings and flat gasket from the shaft.
- c. Remove the cylinder coupler from the basket by removing the three nuts and washers from the studs attaching the coupler to the basket.
- d. Remove the shaft from the wash basket cylinder by removing the locking tab and locknut located at the base of the shaft.

ASSEMBLY OF CYLINDER AND SHAFT

IMPORTANT: We recommend installing new "O" rings, "V" seal and flat gasket whenever cylinder and shaft assembly are removed. Lubricate inside of "O" rings before installing. Make sure new "O" rings are not cut or damaged and are in their normal (not inside out) position when in place. Apply a bead of sealant, such as Dow Corning® 732-RTV or equivalent (these are clear silicone sealants), around the entire area where the gland and the flange on the shaft meet.

- a. Install new flat washer.
- b. Install new "O" rings on shaft. See **Important** above.
- c. Install gland on shaft.
- d. Install new "V" seal.
- e. Place key in slot of shaft, then insert cylinder shaft into cylinder coupler.
- f. Install lockwasher and locking nut.

IMPORTANT: After locking nut has been tightened, bend at least two locking tabs on lockwasher into place on nut.

- g. Place the cylinder shaft and coupler over the rib rods protruding through the rear of cylinder. Secure coupler to cylinder using washers and nuts.

24. BEARING HOUSING AND SEAL HOUSING

- a. Bearing Housing and Seal Housing Removal:

1. Remove cylinder and shaft assembly, *paragraph 23*.
2. Using a 13mm socket, remove 16 nuts and eight washers holding plate to inside of outer tub.

IMPORTANT: Before removing nuts and washers, lay a cloth over the drain housing so nuts and washers do not fall into the drain housing.

3. Pry the plate off the inside of the outer tub.
4. Remove the eight nuts and four washers holding the bearing housing to the back of the chassis.
5. Pull bearing housing off the back of the chassis.

⚠WARNING

To reduce the risk of personal injury, use care when removing the bearing housing from the rear of the washer as the bearing housing is very heavy.

6. Remove seal housing.

- b. Bearing Housing Disassembly:

1. Insert No. G171397 Punch Bar into No. G171652 Sleeve and tighten with No. G144055 Allen Screw. Insert punch bar with bearing punch through center of front bearing and drive rear bearing out of housing.
2. Reverse the housing and place a nut on each of the four bearing housing studs to protect the threads.
3. Drop the No. G171660 Sleeve into the bearing housing cavity, making sure it is seated evenly. Drive the front bearing out of the housing with the punch bar and sleeve.

- c. Seal Housing Disassembly:

NOTE: Inspect seal housing for any signs of wear or leakage and replace worn parts if necessary.

1. Pry seal from seal housing.
2. Install new seal in seal housing and seat firmly with No. G171504 Plate Handle and No. G171488 Seal Plate.

NOTE: When replacing seal, we recommend installing new bearings also.

NOTE: When installing new seal, apply a retaining compound (such as Loctite) to the outside diameter of the seal to assure a water tight seal. Lubricate inside diameter of seal with No. 21814 Lubricant.

- d. Assembly of Bearing Housing:

NOTE: Apply a retaining compound (such as Loctite) to outside diameter of bearings before installing bearings into bearing housing.

1. Install front bearing first.
2. Thread No. G171504 Plate Handle into No. G171678 Bearing Seal Plate.
3. Install front bearing flat into bearing housing cavity. Place plate handle with bearing seal plate over bearing and seat bearing in housing by pounding on plate handle with a hammer.

(continued)

e. Bearing Housing Installation:

NOTE: The rear bearing is installed after the cylinder and shaft have been pulled through the front bearing and housing.

1. Insert seal housing onto the bearing housing assembly.
2. Place bearing assembly onto back of chassis, making sure the elbow and seal drain hose come out of the bottom of the assembly.
3. Secure the bearing housing to the chassis with the eight nuts and four washers and tighten the nuts evenly and firmly.
4. Place the seal plate over the eight bolts inside the outer tub and secure the seal plate with a washer and two nuts on each bolt.

f. Wash Basket Cylinder and Shaft Installation:

1. Insert the wash basket cylinder and shaft assembly into the bearing housing from the front of the washer through the outer tub. Run the basket and shaft in as straight as possible to prevent damage to the seals.
2. Mount the No. G171520 Hub to the bearing housing with three No. G146563 Screws.
3. Insert an allen wrench into the No. G171264 Puller Allen Fitting and turn the puller allen fitting into the No. G171439 Puller Bolt approximately one inch.

NOTE: Install the puller allen fitting into the puller bolt with the allen hex end extending out from the puller bolt.

4. Screw the No. G171447 Puller Nut onto the No. G171439 Puller Bolt.
5. Screw the puller bolt, with the puller allen fitting, into the cylinder shaft until the puller bolt locks in against the cylinder shaft.

NOTE: Block the cylinder at front of washer to prevent the cylinder from rotating while pulling cylinder and shaft into bearing housing.

6. Turn the No. G171447 Puller Nut **clockwise** to pull the cylinder shaft through the bearing housing to properly position the wash basket cylinder. Turn the puller nut until the cylinder is properly seated against the front bearing.
7. Loosen the puller nut and completely remove the puller bolt, with the puller allen fitting, from the cylinder shaft.

g. Rear Bearing Installation:

NOTE: Install rear bearing after wash basket cylinder and shaft assembly is installed.

1. Remove the No. G171520 Hub from the bearing housing. Place the rear bearing onto the shaft and center the bearing over the opening in the bearing housing.
2. Place the No. G171520 Hub back onto the bearing housing, over the cylinder shaft.
3. Screw the No. G171439 Puller Bolt, with the puller allen fitting, into the cylinder shaft.
4. Using the No. G171454 Handle, turn the puller nut up tight against the hub. Turn the puller nut **clockwise** until the rear bearing is seated firmly in the bearing housing.
5. Remove the puller bolt, with the puller allen fitting from the cylinder shaft.
6. Install lockwasher and locking nut on cylinder shaft and tighten nut firmly.

IMPORTANT: After locking nut has been tightened, bend at least two locking tabs on lockwasher into place on nut.

h. Cylinder Pulley Installation:

1. Insert the No. G171264 Puller Allen Fitting into the No. G171439 Puller Bolt approximately one inch.

NOTE: Install the puller allen fitting into the puller bolt with the allen hex end extending out from the puller bolt.

2. Insert the pulley key onto the shaft and start the pulley onto the shaft with a hammer.
3. Screw the No. G171439 Puller Bolt with No. G171264 Puller Allen Fitting into the cylinder shaft.
4. Insert the No. G171454 Handle into the No. G171447 Puller Nut and turn the drive nut **clockwise** to push the pulley onto the shaft.
5. When the pulley is seated firmly onto the shaft, install the large washer, lockwasher and bolt into the shaft and tighten firmly.

25. SIDE PANELS (Right or Left)

- a. Remove the two screws holding the cabinet top rear corner tabs to the rear cross channel of the washer.
- b. Insert a key into the lock (located on the rear cross channel) and unlock.
- c. Lift up on the back portion of the cabinet top and slide the top forward to disengage the cabinet top from the hold-down tabs located on the top flange of the front panel.
- d. Lift the cabinet top off the washer.
- e. Remove screws and washers holding rear panel to chassis and remove rear panel.
- e. Remove screws and washers holding side panels to chassis and remove side panels.

26. OUTER TUB

- a. Remove cabinet top, *paragraph 1*, rear panel, *paragraph 20* and side panels, *paragraph 25*.
- b. Remove control panel, *paragraph 2*.
- c. Remove belts and pulley, *paragraphs 21 and 22*.
- d. Remove outer tub front panel, *paragraph 18*, and front panel, *paragraph 19*.
- e. Remove wash basket cylinder and shaft assembly, *paragraph 23*.
- f. Loosen all clamps and remove all hoses from outer tub.
- g. Remove setscrew, washer and nut holding front of outer tub to each side of chassis.
- h. Remove eight setscrews, washers and nuts holding outer tub to chassis and remove outer tub from chassis.

27. MOTOR REMOVAL

NOTE: Disconnect ground wire before removing motor.

⚠ CAUTION

Whenever ground wires are removed during servicing, those ground wires must be reconnected to insure that the washer is properly grounded.

- a. Remove screws holding rear panel to cabinet and remove panel.
- b. Use a piece of two-by-four or something similar to use for leverage to lift the motor while running the belts off the pulley. Once the belts have been removed from the pulley, lower the motor gradually, DO NOT let it drop or you could damage the motor.
- c. Remove the nuts, screws and washers holding the motor bracket to the bottom of the chassis assembly.
- d. Disconnect the motor harness plug.

⚠ WARNING

To reduce the risk of personal injury, use care when removing the motor out the rear of the washer as the motor is very heavy.

- e. Remove the motor by grasping the motor bracket shaft and carefully remove the motor out the rear of the washer.

NOTE: On Single Phase Units Only — Disconnect the two wires from the centrifugal switch at the rear of the motor. Make sure you mark the terminal connections and the corresponding wire number so the wires can be reinstalled correctly.

IMPORTANT: We recommend that you take the motor and motor bracket assembly to a machine shop and have the motor bracket shaft pressed out. Have the new motor installed on the motor bracket and the shaft pressed back into the motor and bracket. If this is not done, you could end up damaging the new motor.

28. CAPACITORS

⚠ WARNING

To reduce the risk of an electric shock, disconnect electrical power to washer before working with the capacitors.

- a. Remove screws and washers holding rear panel to cabinet and remove rear panel.
- b. Use a piece of two-by-four or something similar to use for leverage to lift the motor while running the belts off the pulley. Once the belts have been removed from the pulley, lower the motor gradually, DO NOT let it drop or you could damage the motor.

⚠ WARNING

Before handling capacitors and to reduce the risk of an electric shock, discharge the capacitors using a resistor rather than shorting.

- c. Remove the two screws holding the capacitor bracket to the chassis.
- d. Remove capacitor from capacitor bracket by removing the nut holding the capacitor to the bracket and pulling the capacitor out.

NOTE: Record the wiring sequence to the capacitors before removing any wires connected to them. Remember to discharge the insulated terminals after they are taken off the capacitors.

29. PRESSURE BULB

- a. Remove screws holding rear panel to cabinet and remove rear panel.
- b. Loosen hose clamp and remove the pressure bulb from the large nipple on the back of the outer tub.
- c. Disconnect the pressure hose from the pressure bulb by pulling the hose out of the connector at the top of the pressure bulb.

30. DRAIN VALVE

- a. Remove screws holding rear panel to cabinet and remove rear panel.
- b. Loosen hose clamps and remove drain elbow, overflow hose and drain hose from drain valve.
- c. Disconnect the wires from the drain valve motor.
- d. Remove the two screws attaching the drain valve to the rear chassis brace and remove the drain valve.

31. FUSE HOLDER AND RESISTOR ASSEMBLY

- a. Remove the two screws holding the cabinet top rear corner tabs to the rear cross channel of the washer.
- b. Insert a key into the lock (located on the rear cross channel) and unlock.
- c. Lift up on the back portion of the cabinet top and slide the top forward to disengage the cabinet top from the hold-down tabs located on the top flange of the front panel.
- d. Lift the cabinet top off the washer.
- e. Turn the nut off the barrel of the fuse holder and pull the fuse holder out through the rear channel.

32. TERMINAL BLOCK

a. Through Serial No. G0527000 —

Remove the two screws holding the cabinet top rear corner tabs to the rear cross channel of the washer.

Insert a key into the lock (located on the rear cross channel) and unlock.

Lift up on the back portion of the cabinet top and slide the top forward to disengage the cabinet top from the hold down tabs on the top flange of the front panel.

Lift the cabinet top off the washer.

Starting Serial No. G0527001 —

Remove the two screws and washers holding the terminal block access cover to the rear cross channel and remove access cover.

- b. Disconnect wires from terminal block.

IMPORTANT: Label terminals and appropriate wires before disconnecting so wires can be reinstalled correctly.

- c. Remove terminal block by removing screw and washer holding terminal block to inside of rear channel.

33. LOCK ASSEMBLY

- a. Remove the two screws holding the cabinet top rear corner tabs to the rear cross channel of the washer.
- b. Insert a key into the lock (located on the rear cross channel) and unlock.
- c. Lift up on the back portion of the cabinet top and slide the top forward to disengage the cabinet top from the hold-down tabs located on the top flange of the front panel.
- d. Lift the cabinet top off the washer.
- e. Remove the hex head screw and washers holding the locking lever to the inside of the rear channel and remove the locking lever.
- f. Remove the lock assembly from the rear channel by removing the nut holding the lock barrel to the inside of the rear channel and pulling the lock out of the rear channel.

SECTION III

Service Helps

IMPORTANT: Refer to the Wiring Diagram for aid in testing washer components.

34. NO HOT WATER

POSSIBLE CAUSE	TO CORRECT
Water in hot water tank is cold.	Check the water heater.
Hot water supply line is closed.	Check for closed valve, kinked hose, or obstruction in line.
Clogged inlet valve screens.	Remove and clean or replace screens.
Inoperative hot water solenoid through Serial No. G0527000.	Check solenoid and replace solenoid if inoperative.
SELECTOR SWITCH improperly set or inoperative.	Set switch or replace switch if inoperative.
Inoperative timer assembly.	Check timer contacts. Replace timer if contacts are inoperative.
Inoperative pressure switch.	Check pressure switch and replace if inoperative.
Broken, loose or incorrect wiring.	Refer to wiring diagram.

35. NO COLD WATER

POSSIBLE CAUSE	TO CORRECT
Cold water supply line is closed.	Check for closed valve, kinked hose, or obstruction in line.
Clogged inlet valve screen	Remove and clean or replace screens.
Inoperative cold water solenoid through Serial No. G0527000.	Check solenoid and replace solenoid if inoperative.
SELECTOR SWITCH improperly set or inoperative.	Set switch or replace switch if inoperative.
Inoperative timer assembly.	Check timer contacts. Replace timer assembly if contacts are inoperative.
Inoperative pressure switch.	Check pressure switch and replace if inoperative.
Broken, loose or incorrect wiring.	Refer to wiring diagram.

36. NO WARM WATER

POSSIBLE CAUSE	TO CORRECT
No hot water.	Refer to <i>paragraph 34</i> .
No cold water.	Refer to <i>paragraph 35</i> .

37. WASHER DOES NOT START AND THE PUSH BUTTON "ON/OFF" IS ON

POSSIBLE CAUSE	TO CORRECT
Electric power disconnected or tripped breaker or fuse blown. One Amp control fuse(s) blown.	Connect electrical power or replace breaker or fuse(s). Check the washer's one Amp fuse and replace if blown. Fuse is located on the rear cross channel through Serial No. G0527000. Starting Serial No. G0527001 and continuing through Serial No. G0527455 the fuse is located behind the terminal block access cover on the rear cross channel. Starting with Serial No. G0527456 the washer is equipped with two one Amp fuses which are located behind the terminal block access cover on the rear cross channel.
3.9 Ohm resistor open.	Replace 3.9 Ohm resistor.
Door lock switch is inoperative or is not closed.	Check door lock assembly and replace if inoperative. Check door latch to ensure proper switch engagement.
Door safety switch is inoperative or is not tripped.	Check door lock assembly and replace if inoperative. Check door latch to ensure proper switch engagement.
Motor overload protector has cycled.	Wait 15 to 30 minutes for overload protector to reset. If protector cycles repeatedly, refer to <i>paragraph 43</i> .
One Phase Models: Reset (located on the rear cross channel) has tripped.	Press the button to reset.
Inoperative timer.	Test timer start circuit. Replace timer if inoperative.
Inoperative timer motor.	Replace timer assembly.
Broken, loose or incorrect wiring.	Refer to the wiring diagram.

38. CYLINDER DOES NOT FILL

POSSIBLE CAUSE	TO CORRECT
No hot water.	Refer to <i>paragraph 34</i> .
No cold water.	Refer to <i>paragraph 35</i> .
Inoperative pressure switch.	Check switch and replace if inoperative.
Inoperative timer.	Check timer and replace if inoperative.
Inoperative drain valve.	Check drain valve and replace if inoperative.
Obstruction in drain valve.	Clean drain valve, refer to the parts section for assembly sequence of valve.
Clogged inlet valve screens.	Remove inlet hoses from inlet valve and clean or replace screens.
Inoperative inlet valve.	Check inlet valve solenoids for proper operation, replace if inoperative.
Inoperative selector switch.	Check switch and replace if inoperative.
Broken, loose or incorrect wiring.	Refer to the wiring diagram.

39. WATER DOES NOT SHUT OFF

POSSIBLE CAUSE	TO CORRECT
Sediment in inlet valve.	Disassemble and clean sediment from inlet valve or replace complete inlet valve.
Inoperative pressure switch.	Check switch and replace if inoperative.
Incorrect wiring.	Refer to wiring diagram.

40. WATER DOES NOT DRAIN FROM CLOTHES CYLINDER

POSSIBLE CAUSE	TO CORRECT
Obstruction in drain valve.	Disassemble and clean valve, refer to parts section for assembly sequence of valve.
Kinked drain hose.	Straighten drain hose.
Inoperative drain valve motor.	Check motor and replace if inoperative.
Inoperative timer assembly.	Check timer and replace if inoperative.
Incorrect wiring.	Refer to wiring diagram.
Inoperative drain relay.	Check electrical connection "C11" and replace if inoperative.

41. WASHER DOES NOT TUMBLE

POSSIBLE CAUSE	TO CORRECT
No electrical power.	Check fuses, switch outlet or power cord.
Inoperative timer assembly.	Check timer and replace if inoperative.
Door lock assembly improperly adjusted.	Adjust door lock assembly.
Motor overload protector has cycled.	Wait 15 to 30 minutes for overload protector to reset. If protector cycles repeatedly, refer to <i>paragraph 43</i> .
Inoperative capacitor(s) (One Phase Model).	Check capacitor(s) and replace if inoperative.
Inoperative drive motor (Wash/Spin).	Check motor and replace if inoperative.
Inoperative pressure switch.	Switch must be in the "normally closed" position. Check pressure hose to see if it is clogged preventing pressure switch from resetting. Check switch and replace if inoperative.
Inoperative motor contactor.	Replace "C5" or "C4" contactor (depending on direction).
Broken, loose or incorrect wiring.	Refer to wiring diagram.

42. WASHER DOES NOT SPIN

POSSIBLE CAUSE	TO CORRECT
No electrical power.	Check fuses, switch outlet or power cord.
Obstruction in drain valve.	Disassemble and clean valve.
Kinked drain hose.	Straighten drain hose.
Inoperative drain valve motor.	Check motor and replace if inoperative.
Incorrect wiring.	Refer to wiring diagram.
Inoperative drain relay.	Check electrical connection "C11" and replace if inoperative.
Motor overload protector has cycled.	Wait 15 to 30 minutes for overload protector to reset. If protector cycles repeatedly, refer to <i>paragraph 43</i> .
Inoperative spin relay.	Check "C8" spin relay and relay coil.
Inoperative "C3" and "C2" contactors.	Check "C3" and "C2" contactors.
Inoperative spin motor.	Replace spin motor.
Inoperative "H1" Pressure Switch through Serial No. G0527000. Inoperative "H2" Pressure Switch starting Serial No. G0527001.	Switch must be in the "normally closed" position. Check pressure hose to see if it is clogged preventing pressure switch from resetting. Check switch and replace if inoperative.
Check water supply.	Has to be in high level fill before it will go into spin.
Broken, loose or incorrect wiring.	Refer to wiring diagram.

43. MOTOR OVERLOAD PROTECTOR CYCLES REPEATEDLY

POSSIBLE CAUSE	TO CORRECT
Low voltage.	See <i>Installation Instructions</i> (supplied with washer) for electrical requirements.
Inoperative motor overload protector.	Replace motor.
Water does not drain from cylinder.	Refer to <i>paragraph 40</i> .
Inoperative contactor.	Check contactor and replace if inoperative.
Inoperative centrifugal switch (One Phase only.)	Check switch and replace motor if inoperative.

44. CYLINDER DOES NOT TURN

POSSIBLE CAUSE	TO CORRECT
Washer does not tumble.	Refer to <i>paragraph 41</i> .
Loose or broken belts.	Check belt tension or replace belts.

45. TIMER DOES NOT ADVANCE

POSSIBLE CAUSE	TO CORRECT
Inoperative timer motor.	Replace complete timer assembly.
Inoperative pressure switch.	Check switch and replace if inoperative.
Incorrect wiring.	Refer to wiring diagram.

46. DOOR WILL NOT OPEN

POSSIBLE CAUSE	TO CORRECT
Inoperative DOOR OPEN switch contacts through Serial No. G0527000.	Check switch and replace if inoperative.
Inoperative timer contacts.	Replace timer.
Inoperative door lock solenoid through Serial No. G0527000.	Replace complete door lock assembly.
No electrical power to door switches (control fuse(s) blown).	Check the washer's one Amp fuse and replace if blown. Fuse is located on the rear cross channel through Serial No. G0527000. Starting Serial No. G0527001 and continuing through Serial No. G0527455 the fuse is located behind the terminal block access cover on the rear cross channel. Starting with Serial No. G0527456 the washer is equipped with two one Amp fuses which are located behind the terminal block access cover on the rear cross channel.
Motor overload protector has cycled.	Wait 15 to 30 minutes for motor overload protector to reset. If overload protector cycles repeatedly refer to <i>paragraph 43</i> .
Door interlock not energized.	Check door lock and switch mechanism, and door latch hook for proper alignment and operation.
Inoperative PUSH-TO-OPEN switch through Serial No. G0527000.	Check switch and replace if inoperative.
Inoperative door safety switch.	Check switch and replace if inoperative.
Broken, loose or incorrect wiring.	Refer to wiring diagram.

47. DOOR LEAKS

POSSIBLE CAUSE	TO CORRECT
Insufficient pressure on door gasket.	Adjust door.
Damaged gasket.	Replace gasket.

48. EXCESSIVE VIBRATION

POSSIBLE CAUSE	TO CORRECT
Unbalanced load in cylinder.	Stop washer, redistribute load, then restart washer.
Loosened mounting bolts.	Tighten bolts.
Loose cabinet screws.	Tighten screws.