

Service Bulletin

JUNE 2008

REFRIGERATORS

ALL SIDE-BY-SIDE GSS25, GSF25, GSH25

PRODUCED BETWEEN APRIL AND MAY 2008

REF 04-08

EVAPORATOR FAN NOISY, BLADE HITTING ORIFICE-MISALIGNED, EVAPORATOR FAN NORMAL NOISE

PERFORMANCE ISSUE

You may find an ORIFICE FAN ASSEMBLY (Fig. 1) instead of the Orifice Fan referenced in IPC (Fig. 2), this change is made to address a noise issue.

REPAIR/ RESOLUTION

Install "ORIFICE FAN ASSEMBLY KIT", **WR49X10190**. This will alleviate the evaporator fan noise.

Fig 1

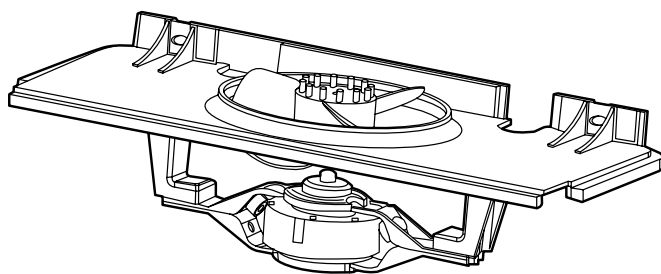
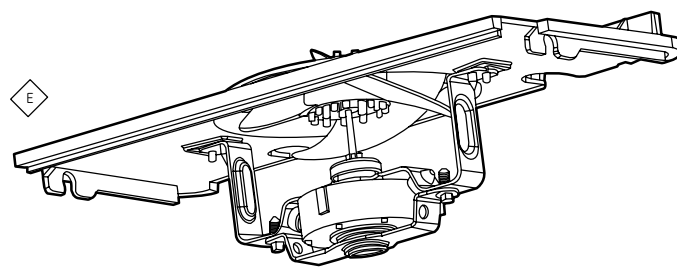


Fig 2



GE Appliances
General Electric Company
Louisville, Kentucky 40225

GE CONFIDENTIAL AND PROPRIETARY INFORMATION-NOT FOR PUBLIC DISCLOSURE

N.D. 2427 REF 04-08